

ZFYV1 Rabbit pAb

CatalogNo: YT7131

Key Features

Host Species

- Rabbit

Reactivity

- Human, Mouse

Applications

- WB

MW

- 85kD (Calculated)

Isotype

- IgG

Storage

Storage* -15°C to -25°C/1 year (Do not lower than -25°C)

Formulation Liquid in PBS containing 50% glycerol, 0.5% BSA and 0.02% sodium azide.

Recommended Dilution Ratios

WB 1:500-2000

Basic Information

Clonality Polyclonal

Immunogen Information

Immunogen Synthesized peptide derived from human ZFYV1 AA range: 318-368

Specificity This antibody detects endogenous levels of ZFYV1 at Human/Mouse

Target Information

Gene name ZFYVE1 DFCP1 KIAA1589 TAFF1 ZNFN2A1 PP10436

Protein Name ZFYV1

Organism	Gene ID	UniProt ID
Human	53349 ;	Q9HBF4 ;
Mouse	217695 ;	Q810J8 ;

Cellular Localization

Golgi apparatus, Golgi stack . Golgi apparatus . Endoplasmic reticulum . Lipid droplet . Preautophagosomal structure . Mitochondrion . Resides predominantly in the cisternal stacks of the Golgi (PubMed:11256955). Colocalizes with TRIM13 on the perinuclear endoplasmic reticulum (PubMed:22178386). During starvation conditions, localizes to omegasomes which are endoplasmic reticulum connected structures at the origin of preautophagosomal structures (PubMed:31293035, PubMed:25876663). Localizes to lipid droplets in the presence of oleic acid (PubMed:31293035, PubMed:30970241). .

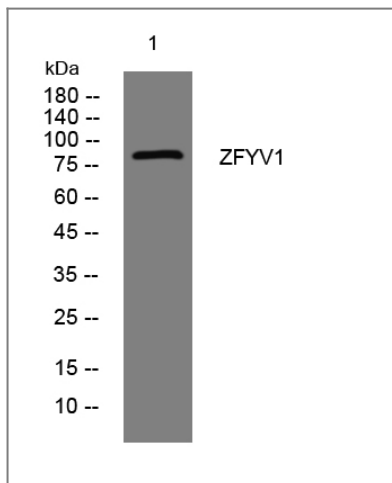
Tissue specificity

[Isoform 2]: Highly expressed in heart. Also detected in the testis. ; [Isoform 1]: Expressed in all tissues examined, including, brain, placenta, lung, liver, skeletal muscle, pancreas and kidney. Highly expressed in heart.

Function

sequence Caution:Translated as Trp.,similarity:Contains 2 FYVE-type zinc fingers.,subcellular location:Resides predominantly in the cisternal stacks of the Golgi.,subunit:Binds to phosphatidylinositol-3-phosphate (PtdIns3P) through its FYVE-type zinc finger.,tissue specificity:Isoform 1 was expressed in all tissues examined, including, brain, placenta, lung, liver, skeletal muscle, pancreas and kidney. Both isoforms, 1 and 2 showed a high expression in heart. Isoform 2 is also detected in the testis.,

Validation Data



Western blot analysis of lysates from HpeG2 cells, primary antibody was diluted at 1:1000, 4° over night

Contact information

Orders: order.cn@immunoway.com
Support: support.cn@immunoway.com
Telephone: 400-8787-807(China)
Website: <http://www.immunoway.com.cn>
Address: 2200 Ringwood Ave San Jose, CA 95131 USA



Please scan the QR code
to access additional
product information:
ZFYV1 Rabbit pAb

For Research Use Only. Not for Use in Diagnostic Procedures.

[Antibody](#) | [ELISA Kits](#) | [Protein](#) | [Reagents](#)