

COMP Rabbit pAb

CatalogNo: YT6588

Key Features

Host Species

- Rabbit

Reactivity

- Human, Mouse, Rat

Applications

- WB

MW

- 83kD (Calculated)

Isotype

- IgG

Recommended Dilution Ratios

WB 1:500-2000

Storage

Storage*

-15°C to -25°C/1 year (Do not lower than -25°C)

Formulation

Liquid in PBS containing 50% glycerol, 0.5% BSA and 0.02% sodium azide.

Basic Information

Clonality

Polyclonal

Immunogen Information

Immunogen

Synthesized peptide derived from human COMP AA range: 628-678

Specificity

This antibody detects endogenous levels of COMP at Human/Mouse/Rat

Target Information

Gene name

COMP

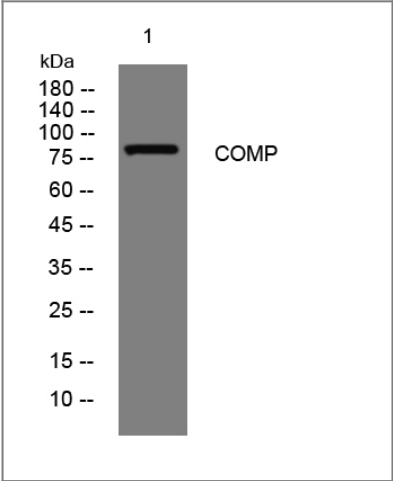
Protein Name	COMP		
	Organism	Gene ID	UniProt ID
	Human	1311 ;	P49747 ;
	Mouse	12845 ;	Q9R0G6 ;
	Rat	25304 ;	P35444 ;

Cellular Localization Secreted, extracellular space, extracellular matrix .

Tissue specificity Abundantly expressed in the chondrocyte extracellular matrix, and is also found in bone, tendon, ligament and synovium and blood vessels. Increased amounts are produced during late stages of osteoarthritis in the area adjacent to the main defect.

Function Disease:Defects in COMP are the cause of multiple epiphyseal dysplasia type 1 (EDM1) [MIM:132400]. EDM is a generalized skeletal dysplasia associated with significant morbidity. Joint pain, joint deformity, waddling gait, and short stature are the main clinical signs and symptoms. EDM is broadly categorized into the more severe Fairbank and the milder Ribbing types.,Disease:Defects in COMP are the cause of pseudoachondroplasia (PSACH) [MIM:177170]. PSAC is a dominantly inherited chondrodysplasia characterized by short stature and early-onset osteoarthritis. PSACH is more severe than EDM1 and is recognized in early childhood.,similarity:Belongs to the thrombospondin family.,similarity:Contains 1 TSP C-terminal (TSPC) domain.,similarity:Contains 4 EGF-like domains.,similarity:Contains 8 TSP type-3 repeats.,subunit:Pentamer; disulfide-linked.,

Validation Data



Western blot analysis of lysates from Jurkat cells, primary antibody was diluted at 1:1000, 4°over night

Contact information

Orders: order.cn@immunoway.com
Support: support.cn@immunoway.com
Telephone: 400-8787-807(China)
Website: <http://www.immunoway.com.cn>
Address: 2200 Ringwood Ave San Jose, CA 95131 USA



Please scan the QR code
to access additional
product information:
COMP Rabbit pAb

For Research Use Only. Not for Use in Diagnostic Procedures.

[Antibody](#) | [ELISA Kits](#) | [Protein](#) | [Reagents](#)