

GCK/GLK Rabbit pAb

CatalogNo: YT6093

Key Features

Host Species

- Rabbit

Reactivity

- Human,Rat

Applications

- WB,ELISA

MW

- 100kD (Observed)

Isotype

- IgG

Storage

Storage* -15°C to -25°C/1 year(Do not lower than -25°C)

Formulation Liquid in PBS containing 50% glycerol, 0.5% BSA and 0.02% sodium azide.

Recommended Dilution Ratios

WB 1:500-2000

ELISA 1:10000-20000

Basic Information

Clonality Polyclonal

Immunogen Information

Immunogen Synthesized peptide derived from human GCK/GLK. at AA range: 221-270

Specificity GCK/GLK Polyclonal Antibody detects endogenous levels of GCK/GLK

Target Information

Gene name MAP4K2/MAP4K3

Protein Name GCK/GLK

Organism

Gene ID

UniProt ID

Human

[5871](#); [8491](#);

[Q12851](#); [Q81VH8](#);

Cellular Localization

Cytoplasm . Basolateral cell membrane ; Peripheral membrane protein . Golgi apparatus membrane ; Peripheral membrane protein .

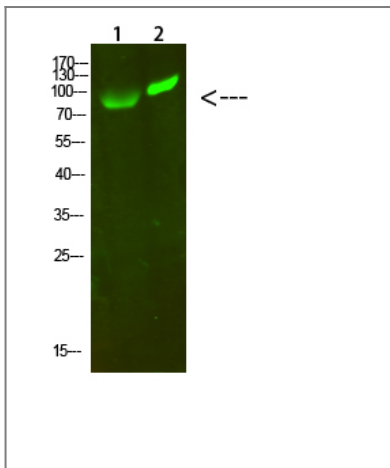
Tissue specificity

Highly expressed in germinal center but not mantle zone B-cells. Also expressed in lung, brain and placenta and at lower levels in other tissues examined.

Function

Catalytic activity:ATP + a protein = ADP + a phosphoprotein.,cofactor:Magnesium.,Function:Enhances MAP3K1 oligomerization, which may relieve amino-terminal mediated MAP3K1 autoinhibition and lead to activation following autophosphorylation. May play a role in the regulation of vesicle targeting or fusion.,sequence Caution:Contaminating sequence. Sequence of unknown origin in the N-terminal part.,similarity:Belongs to the protein kinase superfamily. STE Ser/Thr protein kinase family. STE20 subfamily.,similarity:Contains 1 CNH domain.,similarity:Contains 1 protein kinase domain.,subunit:Interacts with TRAF2, MAP3K1 and RAB8A.,tissue specificity:Highly expressed in germinal center but not mantle zone B-cells. Also expressed in lung, brain and placenta and at lower levels in other tissues examined.,

Validation Data



Western Blot analysis of 1,293T 2, hela cells using primary antibody diluted at 1:1000(4°C overnight). Secondary antibody:Goat Anti-rabbit IgG IRDye 800(diluted at 1:5000, 25°C, 1 hour)

Contact information

Orders: order.cn@immunoway.com
Support: support.cn@immunoway.com
Telephone: 400-8787-807(China)
Website: <http://www.immunoway.com.cn>
Address: 2200 Ringwood Ave San Jose, CA 95131 USA



Please scan the QR code to access additional product information:
GCK/GLK Rabbit pAb

