

## FAM48A Rabbit pAb

CatalogNo: YT5828

### Key Features

#### Host Species

- Rabbit

#### Reactivity

- Human, Mouse, Rat

#### Applications

- WB, ELISA

#### MW

- 85kD (Observed)

#### Isotype

- IgG

### Storage

**Storage\*** -15°C to -25°C/1 year (Do not lower than -25°C)

**Formulation** Liquid in PBS containing 50% glycerol, 0.5% BSA and 0.02% sodium azide.

### Recommended Dilution Ratios

**WB 1:500-2000**

**ELISA 1:10000-20000**

### Basic Information

**Clonality** Polyclonal

### Immunogen Information

**Immunogen** The antiserum was produced against synthesized peptide derived from the Internal region of human FAM48A. AA range:231-280

**Specificity** The antibody detects endogenous FAM48A protein

### Target Information

**Gene name** FAM48A C13orf19 FP757

**Protein Name** family with sequence similarity 48, member A

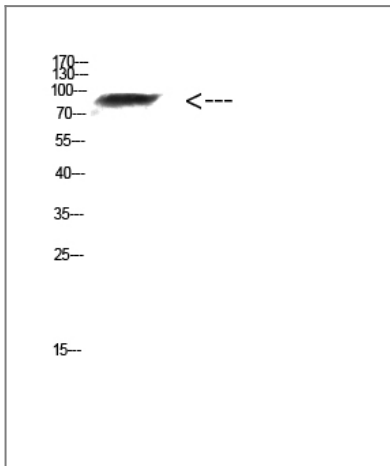
Organism	Gene ID	UniProt ID
Human	<a href="#">55578</a> ;	<a href="#">Q8NEM7</a> ;
Mouse	<a href="#">56790</a> ;	<a href="#">Q7TT00</a> ;
Rat		<a href="#">Q66HC7</a> ;

**Cellular Localization** Nucleus .

**Tissue specificity** Highly expressed in testis, moderately in brain and pituitary gland. Expressed in several fetal tissues, including lung, brain, thymus and kidney. Expression is down-regulated in malignant prostate tissues.

**Function** Function:Required for MAP kinase p38 (MAPK11, MAPK12, MAPK13 and/or MAPK14) activation during gastrulation. Required for down-regulation of E-cadherin during gastrulation by regulating E-cadherin protein level downstream from NCK-interacting kinase (NIK) and independently of the regulation of transcription by Fgf signaling and Snail.,similarity:Belongs to the FAM48 family.,subunit:Interacts with MAPK14.,tissue specificity:Highly expressed in testis, moderately in brain and pituitary gland. Expressed in several fetal tissues, including lung, brain, thymus and kidney. Expression is down-regulated in malignant prostate tissues.,

## Validation Data



Western Blot analysis of mouse-kidney cells using Antibody diluted at 1000. Secondary antibody(catalog#:RS0002) was diluted at 1:20000

## Contact information

Orders: [order.cn@immunoway.com](mailto:order.cn@immunoway.com)  
Support: [support.cn@immunoway.com](mailto:support.cn@immunoway.com)  
Telephone: 400-8787-807(China)  
Website: <http://www.immunoway.com.cn>  
Address: 2200 Ringwood Ave San Jose, CA 95131 USA



Please scan the QR code to access additional product information:  
**FAM48A Rabbit pAb**

