

## Smo Rabbit pAb

CatalogNo: YT4345

Orthogonal Validated 

### Key Features

#### Host Species

- Rabbit

#### Reactivity

- Human, Mouse, Rat

#### Applications

- WB, ELISA

#### MW

- 86kD (Observed)

#### Isotype

- IgG

### Recommended Dilution Ratios

**WB 1:500-1:2000****ELISA 1:10000****Not yet tested in other applications.**

### Storage

**Storage\*** -15°C to -25°C/1 year (Do not lower than -25°C)**Formulation** Liquid in PBS containing 50% glycerol, 0.5% BSA and 0.02% sodium azide.

### Basic Information

**Clonality** Polyclonal

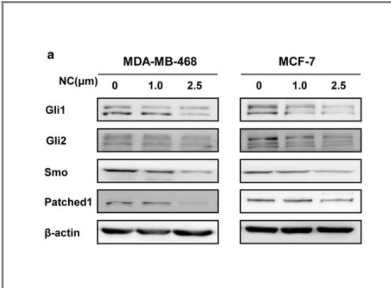
### Immunogen Information

**Immunogen** The antiserum was produced against synthesized peptide derived from human SMO. AA range: 68-117**Specificity** Smo Polyclonal Antibody detects endogenous levels of Smo protein.

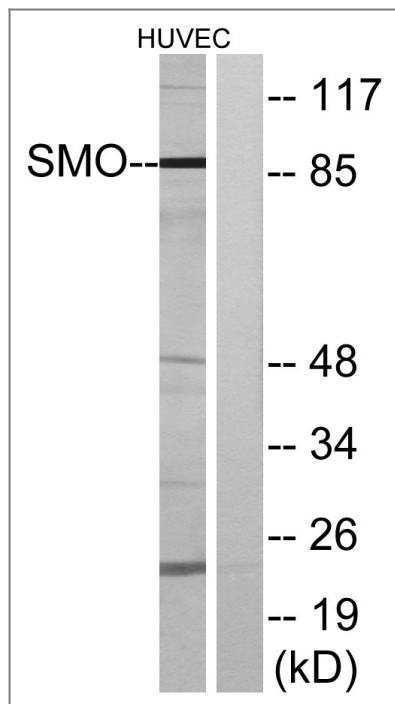
### Target Information

Gene name	SMO		
Protein Name	Smoothened homolog		
	Organism	Gene ID	UniProt ID
	Human	<a href="#">6608</a> ;	<a href="#">Q99835</a> ;
	Mouse	<a href="#">319757</a> ;	<a href="#">P56726</a> ;
	Rat	<a href="#">25273</a> ;	<a href="#">P97698</a> ;
Cellular Localization	Membrane ; Multi-pass membrane protein . Cell projection, cilium .		
Tissue specificity	Brain,Embryonic lung,Synovial membrane,		
Function	Disease:Defects in SMO are involved in basal cell carcinoma (BCC).,Function:G protein-coupled receptor that probably associates with the patched protein (PTCH) to transduce the hedgehog's proteins signal. Binding of sonic hedgehog (SHH) to its receptor patched is thought to prevent normal inhibition by patched of smoothened (SMO).,similarity:Belongs to the G-protein coupled receptor Fz/Smo family.,similarity:Contains 1 FZ (frizzled) domain.,		

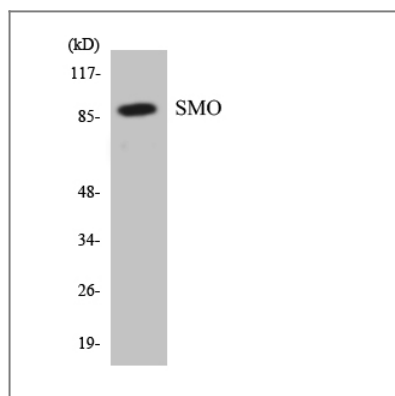
| Validation Data



Sun, Mingjuan, et al. "Hedgehog pathway is involved in nitidine chloride induced inhibition of epithelial-mesenchymal transition and cancer stem cells-like properties in breast cancer cells." Cell & bioscience 6.1 (2016): 44.



Western blot analysis of lysates from HUVEC cells, using SMO Antibody. The lane on the right is blocked with the synthesized peptide.



Western blot analysis of the lysates from HepG2 cells using SMO antibody.

## Contact information

Orders: [order.cn@immunoway.com](mailto:order.cn@immunoway.com)  
 Support: [support.cn@immunoway.com](mailto:support.cn@immunoway.com)  
 Telephone: 400-8787-807(China)  
 Website: <http://www.immunoway.com.cn>  
 Address: 2200 Ringwood Ave San Jose, CA 95131 USA



Please scan the QR code to access additional product information:

**Smo Rabbit pAb**

For Research Use Only. Not for Use in Diagnostic Procedures.

[Antibody](#) | [ELISA Kits](#) | [Protein](#) | [Reagents](#)