

SKI-1 Rabbit pAb

CatalogNo: YT4309

Key Features

Host Species

- Rabbit

Reactivity

- Human, Mouse, Rat

Applications

- WB, ELISA, IHC

MW

- 130kD (Observed)

Isotype

- IgG

Storage

Storage* -15°C to -25°C/1 year (Do not lower than -25°C)

Formulation Liquid in PBS containing 50% glycerol, 0.5% BSA and 0.02% sodium azide.

Recommended Dilution Ratios

WB 1:500-2000

IHC 1:50-300

ELISA 1:2000-20000

Basic Information

Clonality Polyclonal

Immunogen Information

Immunogen Synthesized peptide derived from SKI-1 . at AA range: 180-260

Specificity SKI-1 Polyclonal Antibody detects endogenous levels of SKI-1 protein.

Target Information

Gene name MBTPS1

Protein Name Membrane-bound transcription factor site-1 protease

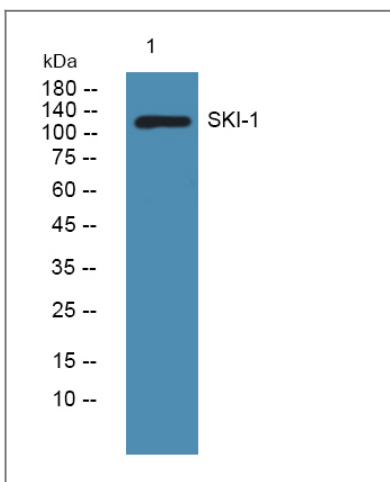
Organism	Gene ID	UniProt ID
Human	8720 ;	Q14703 ;
Mouse	56453 ;	Q9WTZ2 ;
Rat	89842 ;	Q9WTZ3 ;

Cellular Localization Endoplasmic reticulum membrane ; Single-pass type I membrane protein . Golgi apparatus membrane ; Single-pass type I membrane protein . May sort to other organelles, including lysosomal and/or endosomal compartments. .

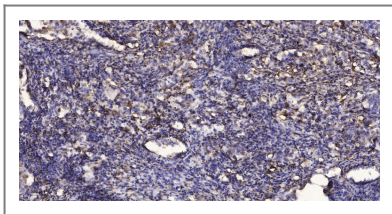
Tissue specificity Widely expressed.

Function Catalytic activity:Processes precursors containing basic and hydrophobic/aliphatic residues at P4 and P2, respectively, with a relatively relaxed acceptance of amino acids at P1 and P3.,cofactor:Calcium.,enzyme regulation:Inhibited by divalent copper and zinc ions, but not by nickel or cobalt. Inhibited by its prosegment, but not smaller fragments thereof.,Function:Catalyzes the first step in the proteolytic activation of the sterol regulatory element-binding proteins (SREBPs). Other known substrates are BDNF and ATF6. Cleaves after hydrophobic or small residues, provided that Arg or Lys is in position P4. Cleaves known substrates after Arg-Ser-Val-Leu (SERBP-2), Arg-His-Leu-Leu (ATF6), Arg-Gly-Leu-Thr (BDNF) and its own propeptide after Arg-Arg-Leu-Leu.,induction:Down-regulated by sterols.,PTM:The 148 kDa zymogen is processed progressively into two membrane-bound 120 and 106 kDa forms in the endoplasmic reticulum, and late into a secreted 98 kDa form. The propeptide is autocatalytically removed through an intramolecular cleavage after Leu-186. Further cleavage generates 14, 10, and 8kDa intermediates.,similarity:Belongs to the peptidase S8 family.,subcellular location:May sort to other organelles, including lysosomal and/or endosomal compartments.,tissue specificity:Widely expressed.,

Validation Data



Western blot analysis of lysates from HCT116 cells, primary antibody was diluted at 1:1000, 4° over night



Immunohistochemical analysis of paraffin-embedded human Squamous cell carcinoma of lung. 1, Antibody was diluted at 1:200(4° overnight). 2, Tris-EDTA,pH9.0 was used for antigen retrieval. 3,Secondary antibody was diluted at 1:200(room temperature, 45min).

| Contact information

Orders: order.cn@immunoway.com
Support: support.cn@immunoway.com
Telephone: 400-8787-807(China)
Website: <http://www.immunoway.com.cn>
Address: 2200 Ringwood Ave San Jose, CA 95131 USA



Please scan the QR code to access additional product information:
SKI-1 Rabbit pAb

For Research Use Only. Not for Use in Diagnostic Procedures.

[Antibody](#) | [ELISA Kits](#) | [Protein](#) | [Reagents](#)