

p18 Rabbit pAb

CatalogNo: YT3495

Key Features

Host Species

- Rabbit

Reactivity

- Human, Mouse, Monkey

Applications

- WB, IHC, IF, ELISA

MW

- 18kD (Observed)

Isotype

- IgG

Storage

Storage* -15°C to -25°C/1 year (Do not lower than -25°C)

Formulation Liquid in PBS containing 50% glycerol, 0.5% BSA and 0.02% sodium azide.

Recommended Dilution Ratios

WB 1:500-1:2000

IHC 1:100-1:300

ELISA 1:20000

IF 1:50-200

Basic Information

Clonality Polyclonal

Immunogen Information

Immunogen The antiserum was produced against synthesized peptide derived from human p18 INK. AA range:111-160

Specificity p18 Polyclonal Antibody detects endogenous levels of p18 protein.

Target Information

Gene name CDKN2C
Protein Name Cyclin-dependent kinase 4 inhibitor C

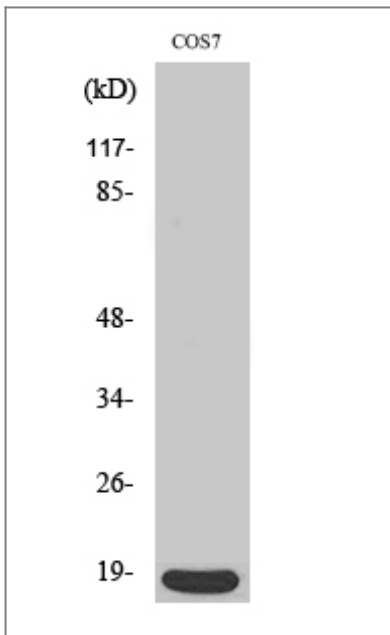
Organism	Gene ID	UniProt ID
Human	1031 ;	P42773 ;
Mouse	12580 ;	Q60772 ;

Cellular Localization nucleus ,cytoplasm ,cytosol ,

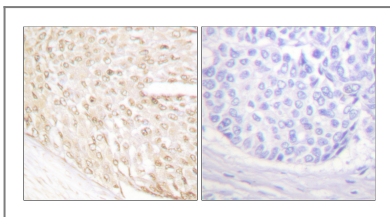
Tissue specificity Highest levels found in skeletal muscle. Also found in pancreas and heart.

Function Disease:Defects in CDKN2C are involved in tumor formation. ,Function:Interacts strongly with CDK6 , weakly with CDK4. Inhibits cell growth and proliferation with a correlated dependence on endogenous retinoblastoma protein RB. ,similarity:Belongs to the CDKN2 cyclin-dependent kinase inhibitor family. ,similarity:Contains 4 ANK repeats. ,subunit:Heterodimer of p18 with CDK6. ,tissue specificity:Highest levels found in skeletal muscle. Also found in pancreas and heart. ,

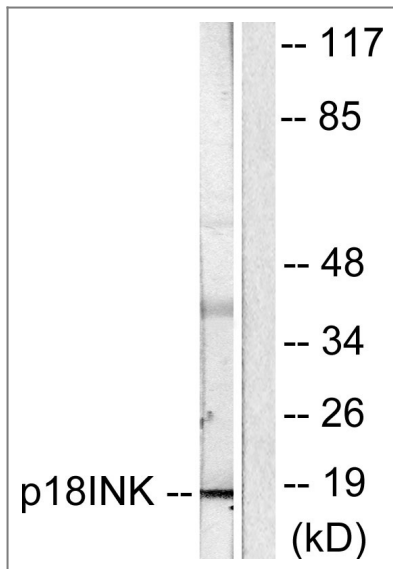
Validation Data



Western Blot analysis of various cells using p18 Polyclonal Antibody



Immunohistochemistry analysis of paraffin-embedded human breast carcinoma tissue, using p18 INK Antibody. The picture on the right is blocked with the synthesized peptide.



Western blot analysis of lysates from COS7 cells, using p18 INK Antibody. The lane on the right is blocked with the synthesized peptide.

Contact information

Orders: order.cn@immunoway.com
Support: support.cn@immunoway.com
Telephone: 400-8787-807(China)
Website: <http://www.immunoway.com.cn>
Address: 2200 Ringwood Ave San Jose, CA 95131 USA



Please scan the QR code to access additional product information:
p18 Rabbit pAb

For Research Use Only. Not for Use in Diagnostic Procedures.

[Antibody](#) | [ELISA Kits](#) | [Protein](#) | [Reagents](#)