

p107 Rabbit pAb

CatalogNo: YT3484

Key Features

Host Species

- Rabbit

Reactivity

- Human, Mouse

Applications

- IF, ELISA

MW

- 121kD (Calculated)

Isotype

- IgG

Storage

Storage* -15°C to -25°C/1 year (Do not lower than -25°C)

Formulation Liquid in PBS containing 50% glycerol, 0.5% BSA and 0.02% sodium azide.

Recommended Dilution Ratios

IF 1:200-1:1000

ELISA 1:5000

Not yet tested in other applications

Basic Information

Clonality Polyclonal

Immunogen Information

Immunogen The antiserum was produced against synthesized peptide derived from human RBL1. AA range:335-384

Specificity p107 Polyclonal Antibody detects endogenous levels of p107 protein.

Target Information

Gene name RBL1

Protein Name Retinoblastoma-like protein 1

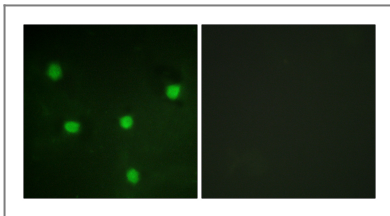
Organism	Gene ID	UniProt ID
Human	5933 ;	P28749 ;
Mouse	19650 ;	Q64701 ;

Cellular Localization Nucleus .

Tissue specificity Testis ,

Function Function:Key regulator of entry into cell division. Directly involved in heterochromatin formation by maintaining overall chromatin structure and , in particular , that of constitutive heterochromatin by stabilizing histone methylation. Recruits and targets histone methyltransferases SUV420H1 and SUV420H2 , leading to epigenetic transcriptional repression. Controls histone H4 'Lys-20' trimethylation. Probably acts as a transcription repressor by recruiting chromatin-modifying enzymes to promoters. Potent inhibitor of E2F-mediated trans-activation. Forms a complex with adenovirus E1A and with SV40 large T antigen. May bind and modulate functionally certain cellular proteins with which T and E1A compete for pocket binding. May act as a tumor suppressor. ,PTM:Exists in both phosphorylated and unphosphorylated forms , and T , but not E1A , binds only to the unphosphorylated form. Cell-cycle arrest properties are inactivated by phosphorylation on Thr-332 , Ser-640 , Ser-964 and Ser-975 by CDK4. ,similarity:Belongs to the retinoblastoma protein (RB) family. ,subunit:Interacts with SUV420H1 and SUV420H2 (By similarity) . Component of the DREAM complex (also named LINC complex) at least composed of E2F4 , E2F5 , LIN9 , LIN37 , LIN52 , LIN54 , MYBL1 , MYBL2 , RBL1 , RBL2 , RBBP4 , TFDP1 and TFDP2. The complex exists in quiescent cells where it represses cell cycle-dependent genes. It dissociates in S phase when LIN9 , LIN37 , LIN52 and LIN54 form a subcomplex that binds to MYBL2. Interacts with AATF. Interacts with KDM5A. Interacts with SV40 and JC virus large T antigens. ,

Validation Data



Immunofluorescence analysis of NIH/3T3 cells, using RBL1 Antibody. The picture on the right is blocked with the synthesized peptide.

Contact information

Orders: order.cn@immunoway.com
Support: support.cn@immunoway.com
Telephone: 400-8787-807(China)
Website: http://www.immunoway.com.cn
Address: 2200 Ringwood Ave San Jose, CA 95131 USA



Please scan the QR code
to access additional
product information:
p107 Rabbit pAb

For Research Use Only. Not for Use in Diagnostic Procedures.

[Antibody](#) | [ELISA Kits](#) | [Protein](#) | [Reagents](#)