

## L-type Ca<sup>++</sup> CP $\gamma$ 1 Rabbit pAb

CatalogNo: YT2599

### Key Features

#### Host Species

- Rabbit

#### Reactivity

- Human, Mouse, Rat

#### Applications

- WB, ELISA

#### MW

- 25kD (Observed)

#### Isotype

- IgG

### Storage

**Storage\*** -15°C to -25°C/1 year (Do not lower than -25°C)

**Formulation** Liquid in PBS containing 50% glycerol, 0.5% BSA and 0.02% sodium azide.

### Recommended Dilution Ratios

**WB 1:500-1:2000**

**ELISA 1:5000**

Not yet tested in other applications.

### Basic Information

**Clonality** Polyclonal

### Immunogen Information

**Immunogen** The antiserum was produced against synthesized peptide derived from human CACNG1. AA range: 137-186

**Specificity** L-type Ca<sup>++</sup> CP  $\gamma$ 1 Polyclonal Antibody detects endogenous levels of L-type Ca<sup>++</sup> CP  $\gamma$ 1 protein.

### Target Information

**Gene name** CACNG1

**Protein Name** Voltage-dependent calcium channel gamma-1 subunit

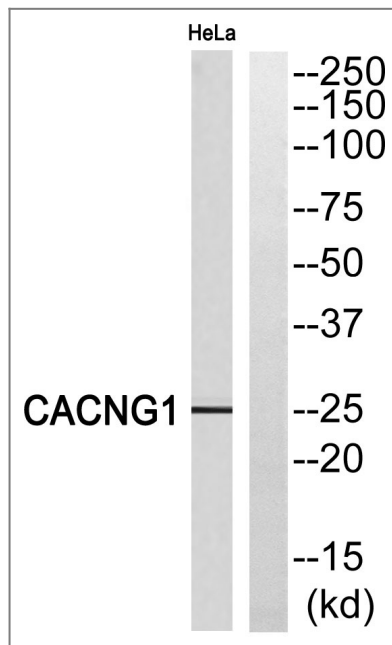
Organism	Gene ID	UniProt ID
Human	<a href="#">786;</a>	<a href="#">Q06432;</a>
Mouse	<a href="#">12299;</a>	<a href="#">O70578;</a>
Rat	<a href="#">29658;</a>	<a href="#">P97707;</a>

**Cellular Localization** Cell membrane, sarcolemma ; Multi-pass membrane protein .

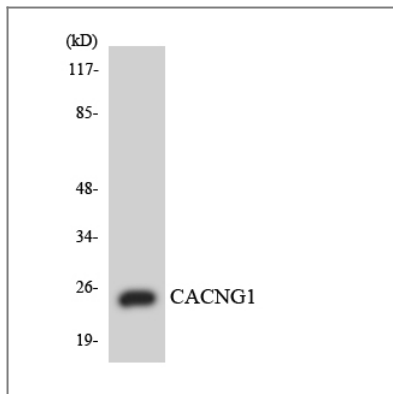
**Tissue specificity** Skeletal muscle.

**Function** Function:This protein is a subunit of the dihydropyridine (DHP) sensitive calcium channel. Plays a role in excitation-contraction coupling. The skeletal muscle DHP-sensitive Ca(2+) channel may function only as a multiple subunit complex.,similarity:Belongs to the PMP-22/EMP/MP20 family. CACNG subfamily.,subunit:The L-type calcium channel is composed of five subunits: alpha-1, alpha-2/delta, beta and gamma.,tissue specificity:Skeletal muscle.,

## Validation Data



Western blot analysis of CACNG1 Antibody. The lane on the right is blocked with the CACNG1 peptide.



Western blot analysis of the lysates from COLO205 cells using CACNG1 antibody.

## Contact information

Orders: [order.cn@immunoway.com](mailto:order.cn@immunoway.com)  
Support: [support.cn@immunoway.com](mailto:support.cn@immunoway.com)  
Telephone: 400-8787-807(China)  
Website: <http://www.immunoway.com.cn>  
Address: 2200 Ringwood Ave San Jose, CA 95131 USA



Please scan the QR code to access additional product information:

**L-type Ca<sup>++</sup> CP  $\gamma$ 1 Rabbit pAb**

For Research Use Only. Not for Use in Diagnostic Procedures.

[Antibody](#) | [ELISA Kits](#) | [Protein](#) | [Reagents](#)