

## IL-15R $\alpha$ Rabbit pAb

CatalogNo: Y2315

### Key Features

#### Host Species

- Rabbit

#### Reactivity

- Human,Rat

#### Applications

- WB,ELISA

#### MW

- 32kD (Observed)

#### Isotype

- IgG

### Storage

**Storage\*** -15°C to -25°C/1 year(Do not lower than -25°C)

**Formulation** Liquid in PBS containing 50% glycerol, 0.5% BSA and 0.02% sodium azide.

### Recommended Dilution Ratios

**WB 1:500-1:2000**

**ELISA 1:40000**

**Not yet tested in other applications.**

### Basic Information

**Clonality** Polyclonal

### Immunogen Information

**Immunogen** The antiserum was produced against synthesized peptide derived from human IL15RA. AA range:99-148

**Specificity** IL-15R $\alpha$  Polyclonal Antibody detects endogenous levels of IL-15R $\alpha$  protein.

### Target Information

**Gene name** IL15RA

**Protein Name** Interleukin-15 receptor subunit alpha

Organism	Gene ID	UniProt ID
Human	<a href="#">3601</a> ;	<a href="#">Q13261</a> ;
Mouse		<a href="#">Q60819</a> ;

**Cellular Localization**

Membrane ; Single-pass type I membrane protein . Nucleus membrane ; Single-pass type I membrane protein . Cell surface . Mainly found associated with the nuclear membrane.; [Isoform 5]: Endoplasmic reticulum membrane; Single-pass type I membrane protein. Golgi apparatus membrane; Single-pass type I membrane protein. Cytoplasmic vesicle membrane; Single-pass type I membrane protein. Membrane; Single-pass type I membrane protein. Isoform 5, isoform 6, isoform 7 and isoform 8 are associated with endoplasmic reticulum, Golgi and cytoplasmic vesicles, but not with the nuclear membrane.; [Isoform 6]: Endoplasmic reticulum membrane; Single-pass type I membrane protein. Golgi apparatus membrane; Single-pass type I membrane protein. Cytoplasmic vesicle membrane; Single-pass type I membrane protein. Membrane; Single-pass type I membrane protein. Isoform 5, isoform 6, isoform 7 and isoform 8 are associated with endoplasmic reticulum, Golgi and cytoplasmic vesicles, but not with the nuclear membrane.; [Isoform 7]: Endoplasmic reticulum membrane; Single-pass type I membrane protein. Golgi apparatus membrane; Single-pass type I membrane protein. Cytoplasmic vesicle membrane; Single-pass type I membrane protein. Membrane; Single-pass type I membrane protein. Isoform 5, isoform 6, isoform 7 and isoform 8 are associated with endoplasmic reticulum, Golgi and cytoplasmic vesicles, but not with the nuclear membrane.; [Isoform 8]: Endoplasmic reticulum membrane; Single-pass type I membrane protein. Golgi apparatus membrane; Single-pass type I membrane protein. Cytoplasmic vesicle membrane; Single-pass type I membrane protein. Membrane; Single-pass type I membrane protein. Isoform 5, isoform 6, isoform 7 and isoform 8 are associated with endoplasmic reticulum, Golgi and cytoplasmic vesicles, but not with the nuclear membrane.; [Soluble interleukin-15 receptor subunit alpha]: Secreted, extracellular space .

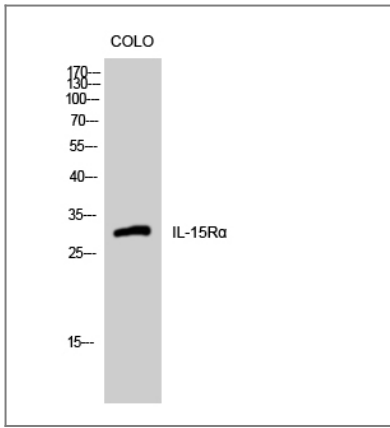
**Tissue specificity**

Expressed in neutrophils (at protein level) (PubMed:15123770). Expressed in fetal brain with higher expression in the hippocampus and cerebellum than in cortex and thalamus (PubMed:12114302). Higher levels of soluble sIL-15RA form in comparison with membrane-bound forms is present in all brain structures (PubMed:12114302). Isoforms 1, 3, 4, 5, 6, 7, 8 and 9: Widely expressed (PubMed:10480910, PubMed:8530383).

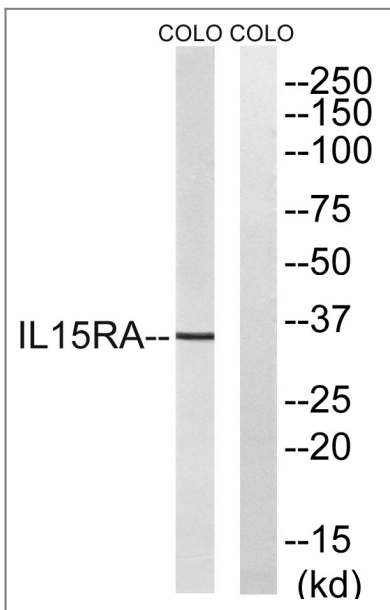
**Function**

Function:Receptor for interleukin-15. Expression of different isoforms may alter or interfere with signal transduction. Isoform 6, isoform 7, isoform 8 and isoform 9 do not bind IL15. Signal transduction involves STAT3, STAT5, STAT6, JAK2 (By similarity) and SYK.,PTM:A soluble form (sIL-15RA) arises from proteolytic shedding of the membrane-anchored receptor. The cleavage involves ADAM17/TACE (By similarity). It also binds IL-15 and thus interferes with IL-15 binding to the membrane receptor.,PTM:N-glycosylated and O-glycosylated.,PTM:Phosphorylated by activated SYK.,similarity:Contains 1 Sushi (CCP/SCR) domain.,subcellular location:Isoform 6, isoform 7, isoform 8 and isoform 9 are associated with endoplasmic reticulum, Golgi and cytoplasmic vesicles, but not with the nuclear membrane.,subcellular location:Mainly found associated with the nuclear membrane.,subunit:The interleukin-15 receptor IL15R is a heterotrimer of IL15RA, IL2RB and IL2RG. IL15RA also self-associates (By similarity). Interacts with SYK.,tissue specificity:Isoform 1, isoform 3, isoform 4, isoform 5, isoform 6, isoform 7, isoform 8 and isoform 9 are widely expressed. Expressed in fetal brain with higher expression in the hippocampus and cerebellum than in cortex and thalamus. Higher levels of soluble sIL-15RA form in comparison with membrane-bound forms is present in all brain structures.,

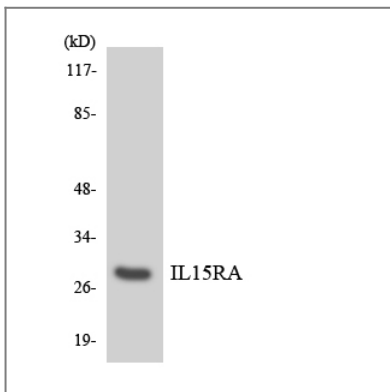
## Validation Data



Western Blot analysis of COLO cells using IL-15Rα Polyclonal Antibody



Western blot analysis of lysates from COLO cells, using IL15RA Antibody. The lane on the right is blocked with the synthesized peptide.



Western blot analysis of the lysates from HeLa cells using IL15RA antibody.

## Contact information

Orders: order.cn@immunoway.com  
Support: support.cn@immunoway.com  
Telephone: 400-8787-807(China)  
Website: <http://www.immunoway.com.cn>  
Address: 2200 Ringwood Ave San Jose, CA 95131 USA



Please scan the QR code to access additional product information:  
**IL-15Rα Rabbit pAb**

