

IL-11R α Rabbit pAb

CatalogNo: YT2310

Key Features

Host Species

- Rabbit

Reactivity

- Human

Applications

- WB,ELISA

MW

- 45kD (Observed)

Isotype

- IgG

Storage

Storage* -15°C to -25°C/1 year (Do not lower than -25°C)

Formulation Liquid in PBS containing 50% glycerol, 0.5% BSA and 0.02% sodium azide.

Recommended Dilution Ratios

WB 1:500-1:2000

ELISA 1:20000

Not yet tested in other applications.

Basic Information

Clonality Polyclonal

Immunogen Information

Immunogen Synthesized peptide derived from IL-11R α . at AA range: 300-380

Specificity IL-11R α Polyclonal Antibody detects endogenous levels of IL-11R α protein.

Target Information

Gene name IL11RA

Protein Name Interleukin-11 receptor subunit alpha

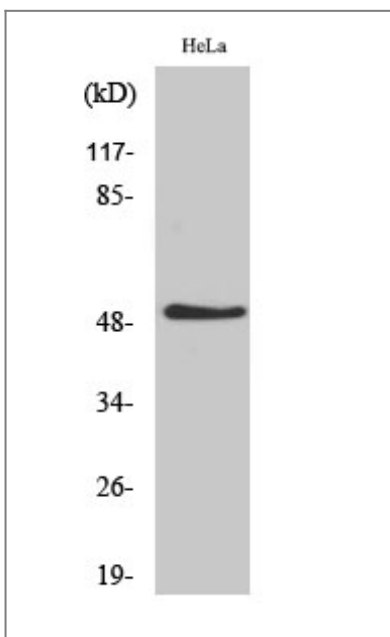
Organism	Gene ID	UniProt ID
Human	3590 ;	Q14626 ;
Mouse		Q64385 ;

Cellular Localization [Interleukin-11 receptor subunit alpha]: Membrane ; Single-pass type I membrane protein . ; [Soluble interleukin-11 receptor subunit alpha]: Secreted . ; [Isoform HCR2]: Secreted .

Tissue specificity Expressed in a number of cell lines , including the myelogenous leukemia cell line K-562 , the megakaryocytic leukemia cell line M-07e , the erythroleukemia cell line TF-1 , and the osteosarcoma cell lines , MG-63 and SaOS-2 (PubMed:7670098) . Also expressed in normal and malignant prostate epithelial cell lines. Expression levels are increased in prostate carcinoma.

Function Disease:Increased levels of IL11R are found in prostate carcinoma. ,Function:Receptor for interleukin-11. The receptor systems for IL6 , LIF , OSM , CNTF , IL11 and CT1 can utilize IL6ST for initiating signal transmission. The IL11/IL11RA/IL6ST complex may be involved in the control of proliferation and/or differentiation of skeletogenic progenitor or other mesenchymal cells. ,similarity:Belongs to the type I cytokine receptor family. Type 3 subfamily. ,similarity:Contains 1 Ig-like C2-type (immunoglobulin-like) domain. ,similarity:Contains 2 fibronectin type-III domains. ,subunit:On ligand binding , forms a multimer complex with IL6ST/gp130. ,tissue specificity:Expressed in a number of cell lines , including the myelogenous leukemia cell line K562 , the megakaryocytic leukemia cell line Mo7E , the erythroleukemia cell line TF1 , and the osteosarcoma cell lines , MG-63 and Saos-2. Also expressed in normal and malignant prostate epithelial cell lines. ,

Validation Data



Western Blot analysis of various cells using IL-11R α Polyclonal Antibody

| Contact information

Orders: order.cn@immunoway.com
Support: support.cn@immunoway.com
Telephone: 400-8787-807(China)
Website: <http://www.immunoway.com.cn>
Address: 2200 Ringwood Ave San Jose, CA 95131 USA



Please scan the QR code
to access additional
product information:
IL-11R α Rabbit pAb

For Research Use Only. Not for Use in Diagnostic Procedures.

[Antibody](#) | [ELISA Kits](#) | [Protein](#) | [Reagents](#)