

## Frizzled-5/8 Rabbit pAb

CatalogNo: YT1783 **Orthogonal Validated** 

### Key Features

#### Host Species

- Rabbit

#### Reactivity

- Human, Mouse, Rat

#### Applications

- WB, IF, ELISA

#### MW

- 75kD (Observed)

#### Isotype

- IgG

### Storage

**Storage\*** -15°C to -25°C/1 year (Do not lower than -25°C)

**Formulation** Liquid in PBS containing 50% glycerol, 0.5% BSA and 0.02% sodium azide.

### Recommended Dilution Ratios

**WB 1:500-1:2000**

**IF 1:200-1:1000**

**ELISA 1:20000**

**Not yet tested in other applications.**

### Basic Information

**Clonality** Polyclonal

### Immunogen Information

**Immunogen** The antiserum was produced against synthesized peptide derived from human FZD8. AA range:31-80

**Specificity** Frizzled-5/8 Polyclonal Antibody detects endogenous levels of Frizzled-5/8 protein.

---

## | Target Information

**Gene name** FZD5/FZD8

**Protein Name** Frizzled-5/8

Organism	Gene ID	UniProt ID
Human	<a href="#">8325</a> ; <a href="#">7855</a> ;	<a href="#">Q13467</a> ; <a href="#">Q9H461</a> ;
Mouse	<a href="#">14367</a> ; <a href="#">14370</a> ;	
Rat	<a href="#">317674</a> ; <a href="#">100909849</a> ;	<a href="#">Q8CHL0</a> ; <a href="#">Q498S8</a> ;

**Cellular Localization**

Cell membrane ; Multi-pass membrane protein . Golgi apparatus membrane ; Multi-pass membrane protein . Cell junction, synapse . Perikaryon . Cell projection, dendrite . Cell projection, axon . Localized at the plasma membrane and also found at the Golgi. .

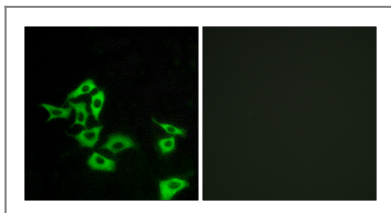
**Tissue specificity** Oesophageal carcinoma,Retina,

**Function**

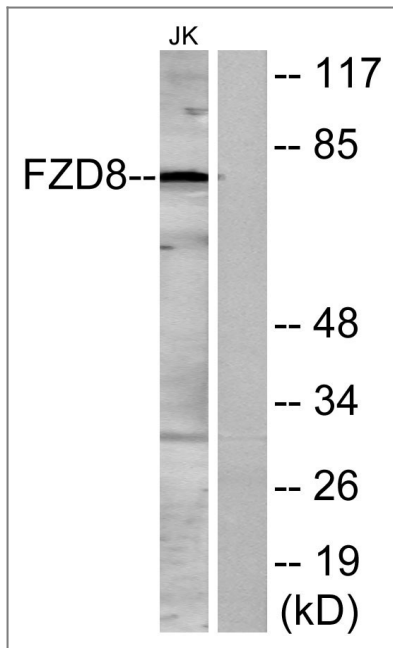
Domain:Lys-Thr-X-X-X-Trp motif is involved in the activation of the Wnt/beta-catenin signaling pathway.,Domain:The FZ domain is involved in binding with Wnt ligands.,Domain:The PDZ-binding motif mediates interaction with GOPC.,Function:Receptor for Wnt proteins. Most of frizzled receptors are coupled to the beta-catenin canonical signaling pathway, which leads to the activation of disheveled proteins, inhibition of GSK-3 kinase, nuclear accumulation of beta-catenin and activation of Wnt target genes. A second signaling pathway involving PKC and calcium fluxes has been seen for some family members, but it is not yet clear if it represents a distinct pathway or if it can be integrated in the canonical pathway, as PKC seems to be required for Wnt-mediated inactivation of GSK-3 kinase. Both pathways seem to involve interactions with G-proteins. May be involved in transduction and intercellular transmission of polarity information during tissue morphogenesis and/or in differentiated tissues. Interacts specifically with Wnt5A to induce the beta-catenin pathway.,similarity:Belongs to the G-protein coupled receptor Fz/Smo family.,similarity:Contains 1 FZ (frizzled) domain.,subcellular location:Localized at the plasma membrane and also found at the Golgi.,subunit:Interacts with GOPC.,

---

## | Validation Data



Immunofluorescence analysis of A549 cells, using FZD8 Antibody. The picture on the right is blocked with the synthesized peptide.



Western blot analysis of lysates from Jurkat cells, using FZD8 Antibody. The lane on the right is blocked with the synthesized peptide.

## Contact information

Orders: [order.cn@immunoway.com](mailto:order.cn@immunoway.com)  
Support: [support.cn@immunoway.com](mailto:support.cn@immunoway.com)  
Telephone: 400-8787-807(China)  
Website: <http://www.immunoway.com.cn>  
Address: 2200 Ringwood Ave San Jose, CA 95131 USA



Please scan the QR code to access additional product information:  
**Frizzled-5/8 Rabbit pAb**

For Research Use Only. Not for Use in Diagnostic Procedures.

[Antibody](#) | [ELISA Kits](#) | [Protein](#) | [Reagents](#)