

## ER81 Rabbit pAb

CatalogNo: YT1604 **Orthogonal Validated** 

### Key Features

#### Host Species

- Rabbit

#### Reactivity

- Human, Mouse

#### Applications

- WB, IHC, IF, ELISA

#### MW

- 60kD (Observed)

#### Isotype

- IgG

### Storage

**Storage\*** -15°C to -25°C/1 year (Do not lower than -25°C)

**Formulation** Liquid in PBS containing 50% glycerol, 0.5% BSA and 0.02% sodium azide.

### Recommended Dilution Ratios

**WB 1:500-1:2000**

**IHC 1:100-1:300**

**ELISA 1:10000**

**IF 1:50-200**

### Basic Information

**Clonality** Polyclonal

### Immunogen Information

**Immunogen** The antiserum was produced against synthesized peptide derived from human ER81. AA range:10-59

**Specificity** ER81 Polyclonal Antibody detects endogenous levels of ER81 protein.

## Target Information

**Gene name** ETV1

**Protein Name** ETS translocation variant 1

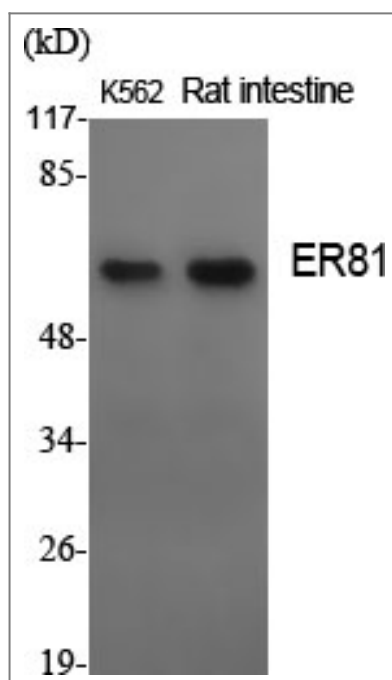
Organism	Gene ID	UniProt ID
Human	<a href="#">2115;</a>	<a href="#">P50549;</a>
Mouse	<a href="#">14009;</a>	<a href="#">P41164;</a>

**Cellular Localization** Nucleus .

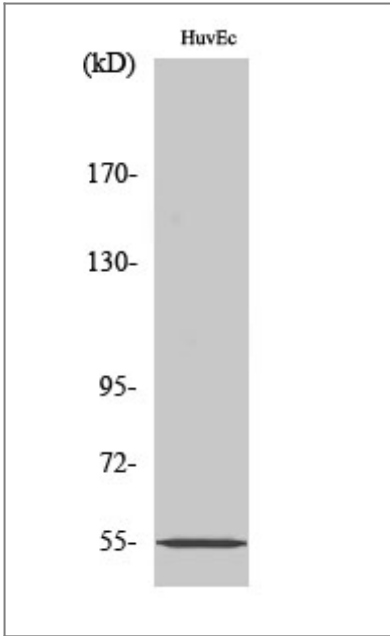
**Tissue specificity** Very highly expressed in brain , highly expressed in testis , lung and heart , moderately in spleen , small intestine , pancreas and colon , weakly in liver , prostate and thymus , very weakly in skeletal muscle , kidney and ovary and not in placenta and peripheral blood leukocytes.

**Function** Disease:A chromosomal aberration involving ETV1 is a cause of Ewing sarcoma [MIM:133450]. Translocation t (7;22) (p22;q12) with EWS. ,Function:Transcriptional activator that binds to DNA sequences containing the consensus pentanucleotide 5'-CGGA[AT]-3'. ,PTM:Sumoylated. ,similarity:Belongs to the ETS family. ,similarity:Contains 1 ETS DNA-binding domain. ,tissue specificity:Very highly expressed in brain , highly expressed in testis , lung and heart , moderately in spleen , small intestine , pancreas and colon , weakly in liver , prostate and thymus , very weakly in skeletal muscle , kidney and ovary and not in placenta and peripheral blood leukocytes. ,

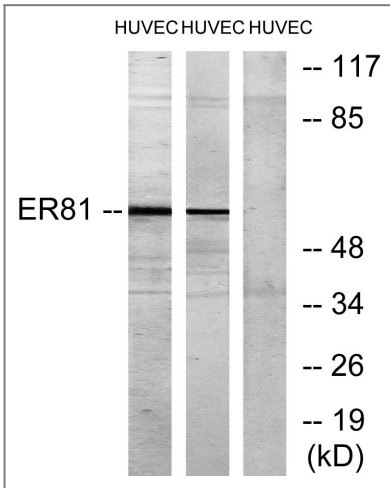
## Validation Data



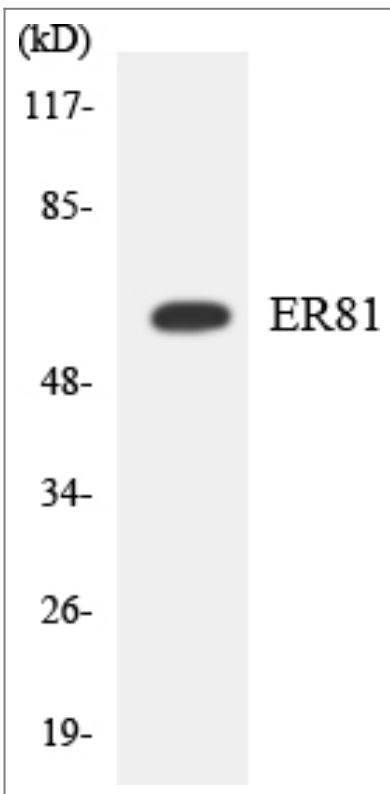
Western Blot analysis of various cells using ER81 Polyclonal Antibody cells nucleus extracted by Minute TM Cytoplasmic and Nuclear Fractionation kit (SC-003, Inventbiotech, MN, USA).



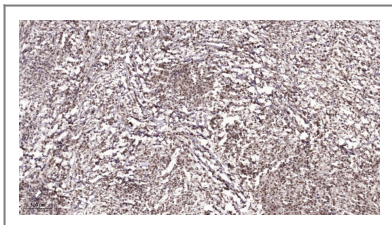
Western Blot analysis of HuvEc cells using ER81 Polyclonal Antibody cells nucleus extracted by Minute TM Cytoplasmic and Nuclear Fractionation kit (SC-003, Inventbiotech, MN, USA).



Western blot analysis of lysates from HUVEC cells, treated with PMA 125ng/ml 30', using ER81 Antibody. The lane on the right is blocked with the synthesized peptide.



Western blot analysis of the lysates from HT-29 cells using ER81 antibody.



Immunohistochemical analysis of paraffin-embedded human Colon cancer. 1, Antibody was diluted at 1:200 (4°C overnight). 2, Tris-EDTA, pH 9.0 was used for antigen retrieval. 3, Secondary antibody was diluted at 1:200 (room temperature, 45min).

## | Contact information

Orders: [order.cn@immunoway.com](mailto:order.cn@immunoway.com)  
Support: [support.cn@immunoway.com](mailto:support.cn@immunoway.com)  
Telephone: 400-8787-807(China)  
Website: <http://www.immunoway.com.cn>  
Address: 2200 Ringwood Ave San Jose, CA 95131 USA



Please scan the QR code to access additional product information:  
**ER81 Rabbit pAb**

For Research Use Only. Not for Use in Diagnostic Procedures.

[Antibody](#) | [ELISA Kits](#) | [Protein](#) | [Reagents](#)