

## Connexin 45 Rabbit pAb

CatalogNo: YT1047 **Orthogonal Validated** 

### Key Features

#### Host Species

- Rabbit

#### Reactivity

- Human, Mouse, Rat

#### Applications

- WB, ELISA

#### MW

- 45kD (Observed)

#### Isotype

- IgG

### Storage

**Storage\*** -15°C to -25°C/1 year (Do not lower than -25°C)

**Formulation** Liquid in PBS containing 50% glycerol, 0.5% BSA and 0.02% sodium azide.

### Recommended Dilution Ratios

**WB 1:500-1:2000**

**ELISA 1:40000**

**Not yet tested in other applications.**

### Basic Information

**Clonality** Polyclonal

### Immunogen Information

**Immunogen** The antiserum was produced against synthesized peptide derived from human GJC1. AA range:231-280

**Specificity** Connexin 45 Polyclonal Antibody detects endogenous levels of Connexin 45 protein.

### Target Information

**Gene name** GJC1

**Protein Name** Gap junction gamma-1 protein

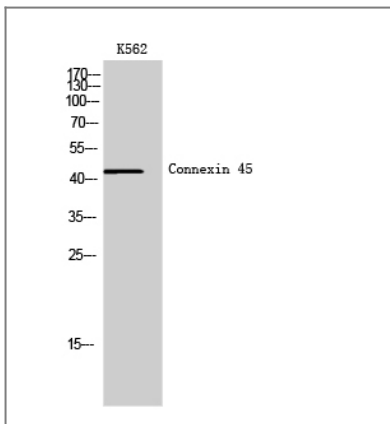
Organism	Gene ID	UniProt ID
Human	<a href="#">10052</a> ;	<a href="#">P36383</a> ;
Mouse	<a href="#">14615</a> ;	<a href="#">P28229</a> ;
Rat	<a href="#">266706</a> ;	<a href="#">A4GG66</a> ;

**Cellular Localization** Cell membrane; Multi-pass membrane protein. Cell junction , gap junction.

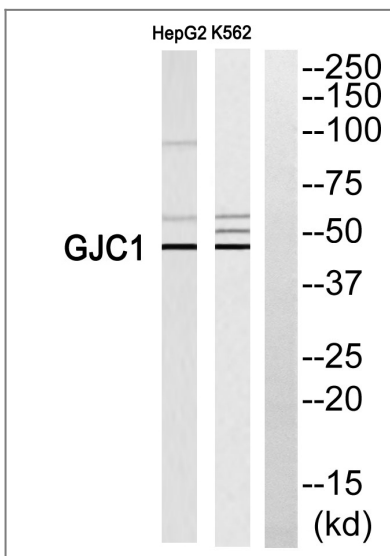
**Tissue specificity** Testis ,Uterus ,

**Function** Function:One gap junction consists of a cluster of closely packed pairs of transmembrane channels , the connexons , through which materials of low MW diffuse from one cell to a neighboring cell. ,similarity:Belongs to the connexin family. Gamma-type subfamily. ,subunit:A connexon is composed of a hexamer of connexins. ,

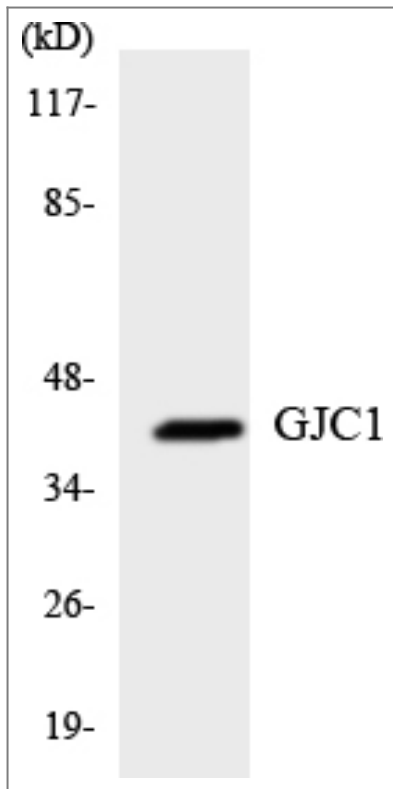
## Validation Data



Western Blot analysis of K562 cells using Connexin 45 Polyclonal Antibody



Western blot analysis of GJC1 Antibody. The lane on the right is blocked with the GJC1 peptide.



Western blot analysis of the lysates from K562 cells using GJC1 antibody.

## Contact information

Orders: [order.cn@immunoway.com](mailto:order.cn@immunoway.com)  
Support: [support.cn@immunoway.com](mailto:support.cn@immunoway.com)  
Telephone: 400-8787-807(China)  
Website: <http://www.immunoway.com.cn>  
Address: 2200 Ringwood Ave San Jose, CA 95131 USA



Please scan the QR code to access additional product information:  
**Connexin 45 Rabbit pAb**

For Research Use Only. Not for Use in Diagnostic Procedures.

[Antibody](#) | [ELISA Kits](#) | [Protein](#) | [Reagents](#)