

COL4A5 Rabbit pAb

CatalogNo: YT1028

Key Features

Host Species

- Rabbit

Reactivity

- Human, Mouse

Applications

- IHC, IF, WB, ELISA

MW

- 160kD (Observed)

Isotype

- IgG

Storage

Storage* -15°C to -25°C/1 year (Do not lower than -25°C)

Formulation Liquid in PBS containing 50% glycerol, 0.5% BSA and 0.02% sodium azide.

Recommended Dilution Ratios

WB 1:500-2000

IHC 1:100-1:300

IF 1:200-1:1000

ELISA 1:10000

Not yet tested in other applications.

Basic Information

Clonality Polyclonal

Immunogen Information

Immunogen The antiserum was produced against synthesized peptide derived from human Collagen IV alpha5. AA range:21-70

Specificity COL4A5 Polyclonal Antibody detects endogenous levels of COL4A5 protein.

Target Information

Gene name COL4A5

Protein Name Collagen alpha-5 (IV) chain

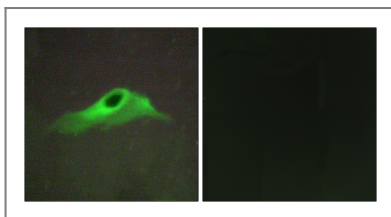
Organism	Gene ID	UniProt ID
Human	1287 ;	P29400 ;

Cellular Localization Secreted , extracellular space , extracellular matrix , basement membrane.

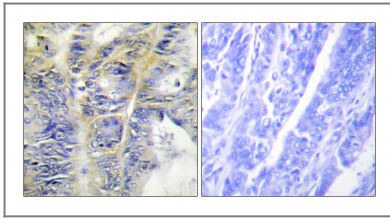
Tissue specificity Isoform 2 is found in kidney.

Function Disease:Defects in COL4A5 are the cause of Alport syndrome X-linked (APSX) [MIM:301050]. APSX is characterized by progressive glomerulonephritis , renal failure , sensorineural deafness , specific eye abnormalities (lenticonous and macular flecks) , and glomerular basement membrane defects. The disorder shows considerable heterogeneity in that families differ in the age of end-stage renal disease and the occurrence of deafness. ,Disease:Deletions covering the N-terminal regions of COL4A5 and COL4A6 , which are localized in a head-to-head manner , are the cause of diffuse leiomyomatosis with Alport syndrome (DL-ATS) [MIM:308940]; also known as esophageal and vulval leiomyomatosis with nephropathy or Alport syndrome and diffuse leiomyomatosis (ATS-DL) . DL-ATS is the combination of AS and diffuse leiomyomatosis (DL) . DL is a tumorous process involving smooth muscle cells , mostly of the esophagus , but also of the tracheobronchial tree and the female genital tract. ,Domain:Alpha chains of type IV collagen have a non-collagenous domain (NC1) at their C-terminus , frequent interruptions of the G-X-Y repeats in the long central triple-helical domain (which may cause flexibility in the triple helix) , and a short N-terminal triple-helical 7S domain. ,Function:Type IV collagen is the major structural component of glomerular basement membranes (GBM) , forming a 'chicken-wire' meshwork together with laminins , proteoglycans and entactin/nidogen. ,PTM:Prolines at the third position of the tripeptide repeating unit (G-X-Y) are hydroxylated in some or all of the chains. ,PTM:Type IV collagens contain numerous cysteine residues which are involved in inter- and intramolecular disulfide bonding. 12 of these , located in the NC1 domain , are conserved in all known type IV collagens. ,similarity:Belongs to the type IV collagen family. ,similarity:Contains 1 collagen IV NC1 (C-terminal non-collagenous) domain. ,subunit:There are six type IV collagen isoforms , alpha 1 (IV) -alpha 6 (IV) , each of which can form a triple helix structure with 2 other chains to generate type IV collagen network. ,

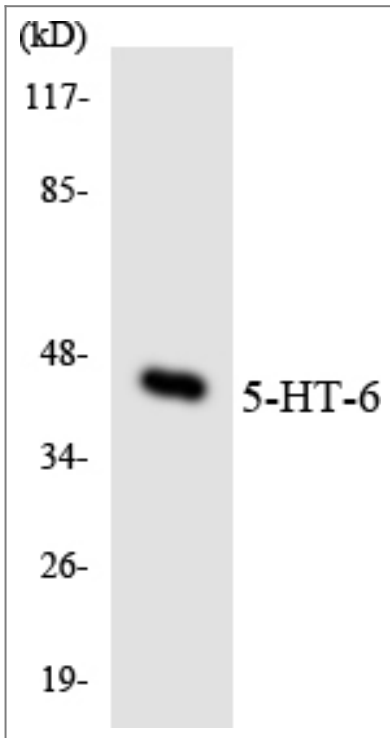
Validation Data



Immunofluorescence analysis of HeLa cells, using Collagen IV alpha5 Antibody. The picture on the right is blocked with the synthesized peptide.



Immunohistochemistry analysis of paraffin-embedded human colon carcinoma tissue, using Collagen IV alpha5 Antibody. The picture on the right is blocked with the synthesized peptide.



Western blot analysis of the lysates from COLO205 cells using 5-HT-6 antibody.

Contact information

Orders: order.cn@immunoway.com
Support: support.cn@immunoway.com
Telephone: 400-8787-807(China)
Website: <http://www.immunoway.com.cn>
Address: 2200 Ringwood Ave San Jose, CA 95131 USA



Please scan the QR code to access additional product information:
COL4A5 Rabbit pAb

For Research Use Only. Not for Use in Diagnostic Procedures.

[Antibody](#) | [ELISA Kits](#) | [Protein](#) | [Reagents](#)