

## CALML5 Rabbit pAb

CatalogNo: YT0611

### Key Features

#### Host Species

- Rabbit

#### Reactivity

- Human

#### Applications

- IHC,IF,ELISA

#### MW

- 16kD (Calculated)

#### Isotype

- IgG

### Storage

**Storage\*** -15°C to -25°C/1 year(Do not lower than -25°C)

**Formulation** Liquid in PBS containing 50% glycerol, 0.5% BSA and 0.02% sodium azide.

### Recommended Dilution Ratios

**IHC 1:100-1:300**

**ELISA 1:10000**

**IF 1:50-200**

### Basic Information

**Clonality** Polyclonal

### Immunogen Information

**Immunogen** The antiserum was produced against synthesized peptide derived from human CALML5. AA range:96-146

**Specificity** CALML5 Polyclonal Antibody detects endogenous levels of CALML5 protein.

### Target Information

**Gene name** CALML5

**Protein Name** Calmodulin-like protein 5

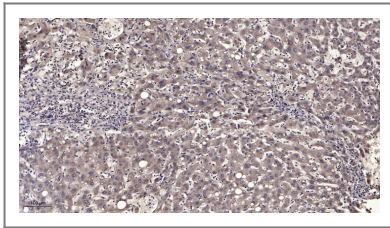
Organism	Gene ID	UniProt ID
Human	<a href="#">51806</a> ;	<a href="#">Q9NZT1</a> ;

**Cellular Localization** extracellular exosome,

**Tissue specificity** Particularly abundant in the epidermis where its expression is directly related to keratinocyte differentiation. Very low expression in lung.

**Function** Function: Binds calcium. May be involved in terminal differentiation of keratinocytes., similarity: Contains 4 EF-hand domains., subunit: Associates with transglutaminase 3., tissue specificity: Particularly abundant in the epidermis where its expression is directly related to keratinocyte differentiation. Very low expression in lung.,

## Validation Data



Immunohistochemical analysis of paraffin-embedded human liver cancer. 1, Antibody was diluted at 1:200(4° overnight). 2, Tris-EDTA, pH9.0 was used for antigen retrieval. 3, Secondary antibody was diluted at 1:200(room temperature, 45min).

## Contact information

Orders: [order.cn@immunoway.com](mailto:order.cn@immunoway.com)  
Support: [support.cn@immunoway.com](mailto:support.cn@immunoway.com)  
Telephone: 400-8787-807(China)  
Website: <http://www.immunoway.com.cn>  
Address: 2200 Ringwood Ave San Jose, CA 95131 USA



Please scan the QR code to access additional product information:  
**CALML5 Rabbit pAb**

For Research Use Only. Not for Use in Diagnostic Procedures.

[Antibody](#) | [ELISA Kits](#) | [Protein](#) | [Reagents](#)