

DAPK1 (Phospho Ser308) Rabbit pAb

CatalogNo: YP1141

Key Features

Host Species

- Rabbit

Reactivity

- Human, Mouse

Applications

- IHC, IF, ELISA

MW

- 160kD (Calculated)

Isotype

- IgG

Storage

Storage* -15°C to -25°C/1 year (Do not lower than -25°C)

Formulation Liquid in PBS containing 50% glycerol, 0.5% BSA and 0.02% sodium azide.

Recommended Dilution Ratios

IHC 1:100-1:300

IF 1:200-1:1000

ELISA 1:10000

Not yet tested in other applications.

Basic Information

Clonality Polyclonal

Immunogen Information

Immunogen The antiserum was produced against synthesized peptide derived from human DAPK1 around the phosphorylation site of Ser308. AA range: 274-323

Specificity

Phospho-DAPK1 (S308) Polyclonal Antibody detects endogenous levels of DAPK1 protein only when phosphorylated at S308. The name of modified sites may be influenced by many factors, such as species (the modified site was not originally found in human samples) and the change of protein sequence (the previous protein sequence is incomplete, and the protein sequence may be prolonged with the development of protein sequencing technology). When naming, we will use the "numbers" in historical reference to keep the sites consistent with the reports. The antibody binds to the following modification sequence (lowercase letters are modification sites):KQsVR

Target Information

Gene name DAPK1

Protein Name Death-associated protein kinase 1

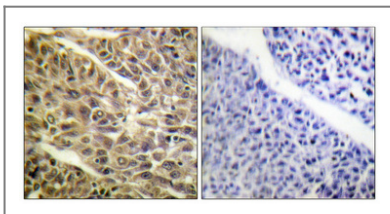
Organism	Gene ID	UniProt ID
Human	1612;	P53355;
Mouse	69635;	Q80YE7;

Cellular Localization [Isoform 1]: Cytoplasm. Cytoplasm, cytoskeleton. Colocalizes with MAP1B in the microtubules and cortical actin fibers.; [Isoform 2]: Cytoplasm. Cytoplasm, cytoskeleton.

Tissue specificity Isoform 2 is expressed in normal intestinal tissue as well as in colorectal carcinomas.

Function Catalytic activity:ATP + a protein = ADP + a phosphoprotein.,cofactor:Magnesium.,enzyme regulation:Negatively regulated by autophosphorylation on Ser-308.,Function:Calcium/calmodulin-dependent serine/threonine kinase which acts as a positive regulator of apoptosis.,induction:Up-regulated following treatment with interferon-gamma.,similarity:Belongs to the protein kinase superfamily.,similarity:Belongs to the protein kinase superfamily. CAMK Ser/Thr protein kinase family. DAP kinase subfamily.,similarity:Contains 1 death domain.,similarity:Contains 1 protein kinase domain.,similarity:Contains 10 ANK repeats.,subcellular location:Colocalizes with the actin filament system.,

Validation Data



Immunohistochemical analysis of paraffin-embedded Human lung cancer. Antibody was diluted at 1:100(4° overnight). High-pressure and temperature Tris-EDTA,pH8.0 was used for antigen retrieval. Negative contrl (right) obtained from antibody was pre-absorbed by immunogen peptide.

Contact information

Orders: order.cn@immunoway.com
Support: support.cn@immunoway.com
Telephone: 400-8787-807(China)
Website: <http://www.immunoway.com.cn>
Address: 2200 Ringwood Ave San Jose, CA 95131 USA



Please scan the QR code
to access additional
product information:
**DAPK1 (Phospho
Ser308) Rabbit pAb**

For Research Use Only. Not for Use in Diagnostic Procedures.

[Antibody](#) | [ELISA Kits](#) | [Protein](#) | [Reagents](#)