

## Cdc25A (Phospho Ser75) Rabbit pAb

CatalogNo: YP0055 **Orthogonal Validated** 

### Key Features

#### Host Species

- Rabbit

#### Reactivity

- Human, Mouse, Rat

#### Applications

- WB, IHC, IF, ELISA

#### MW

- 59kD (Observed)

#### Isotype

- IgG

### Storage

**Storage\*** -15°C to -25°C/1 year (Do not lower than -25°C)

**Formulation** Liquid in PBS containing 50% glycerol, 0.5% BSA and 0.02% sodium azide.

### Recommended Dilution Ratios

**WB 1:500-1:2000**

**IHC 1:100-1:300**

**ELISA 1:5000**

**IF 1:50-200**

### Basic Information

**Clonality** Polyclonal

### Immunogen Information

**Immunogen** Synthesized phospho-peptide around the phosphorylation site of human Cdc25A (phospho Ser75)

## Specificity

Phospho-Cdc25A (S75) Polyclonal Antibody detects endogenous levels of Cdc25A protein only when phosphorylated at S75. The name of modified sites may be influenced by many factors, such as species (the modified site was not originally found in human samples) and the change of protein sequence (the previous protein sequence is incomplete, and the protein sequence may be prolonged with the development of protein sequencing technology). When naming, we will use the "numbers" in historical reference to keep the sites consistent with the reports. The antibody binds to the following modification sequence (lowercase letters are modification sites):MGsSE

## Target Information

**Gene name** CDC25A

**Protein Name** M-phase inducer phosphatase 1

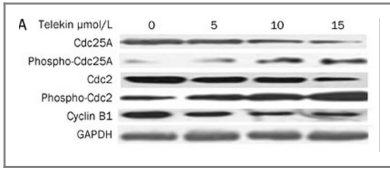
Organism	Gene ID	UniProt ID
Human	<a href="#">993</a> ;	<a href="#">P30304</a> ;
Mouse		<a href="#">P48964</a> ;
Rat	<a href="#">171102</a> ;	<a href="#">P48965</a> ;

**Cellular Localization** intracellular,nucleus,nucleoplasm,cytoplasm,cytosol,

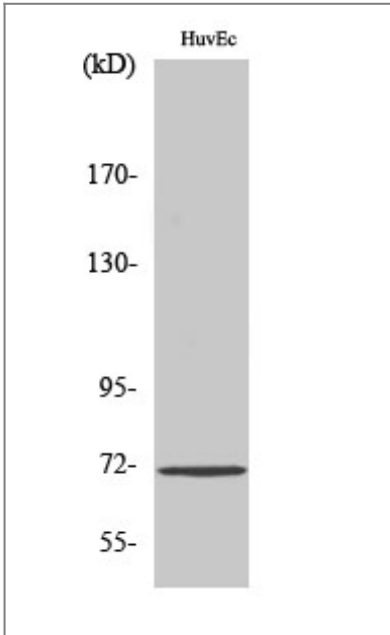
**Tissue specificity** Lymph,

**Function** Catalytic activity:Protein tyrosine phosphate + H(2)O = protein tyrosine + phosphate.,Domain:The phosphodegron motif mediates interaction with specific F-box proteins when phosphorylated. Putative phosphorylation sites at Ser-79 and Ser-82 appear to be essential for this interaction.,enzyme regulation:Stimulated by B-type cyclins.,Function:Tyrosine protein phosphatase which functions as a dosage-dependent inducer of mitotic progression. Directly dephosphorylates CDC2 and stimulates its kinase activity. Also dephosphorylates CDK2 in complex with cyclin E, in vitro.,PTM:Phosphorylated by CHEK1 on Ser-76, Ser-124, Ser-178, Ser-279, Ser-293 and Thr-507 during checkpoint mediated cell cycle arrest. Also phosphorylated by CHEK2 on Ser-124, Ser-279, and Ser-293 during checkpoint mediated cell cycle arrest. Phosphorylation on Ser-178 and Thr-507 creates binding sites for YWHAE/14-3-3 epsilon which inhibits CDC25A. Phosphorylation on Ser-76, Ser-124, Ser-178, Ser-279 and Ser-293 may also promote ubiquitin-dependent proteolysis of CDC25A.,PTM:Ubiquitinated. Association with the F-box proteins BTRC and FBXW11 targets the protein for ubiquitination by CUL1 and proteolysis by the ubiquitin-dependent proteasome pathway.,similarity:Belongs to the MPI phosphatase family.,similarity:Contains 1 rhodanese domain.,subunit:Interacts with CCNB1/cyclin B1. Interacts with YWHAE/14-3-3 epsilon when phosphorylated. Interacts with CUL1 specifically when CUL1 is neddylated and active. Interacts with BTRC/BTRCP1 and FBXW11/BTRCP2. Interactions with CUL1, BTRC and FBXW11 are enhanced upon DNA damage.,

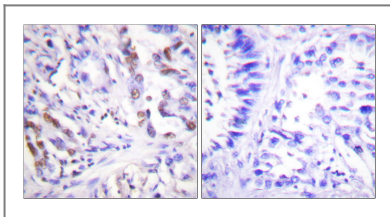
## Validation Data



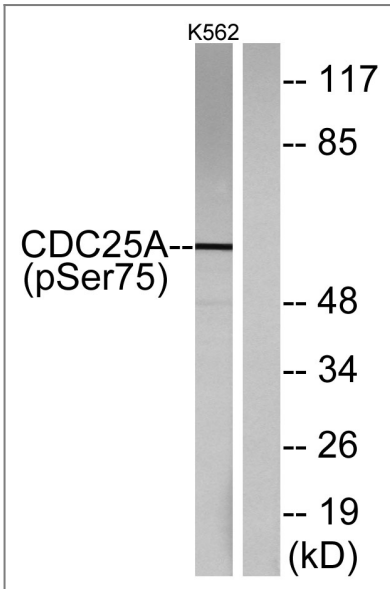
Li, Lin, et al. "Telekin suppresses human hepatocellular carcinoma cells in vitro by inducing G 2/M phase arrest via the p38 MAPK signaling pathway." *Acta Pharmacologica Sinica* 35.10 (2014): 1311.



Western Blot analysis of various cells using Phospho-Cdc25A (S75) Polyclonal Antibody



Immunohistochemistry analysis of paraffin-embedded human breast cancer, using CDC25A (Phospho-Ser75) Antibody. The picture on the right is blocked with the CDC25A (Phospho-Ser75) peptide.



Western blot analysis of CDC25A (Phospho-Ser75) Antibody. The lane on the right is blocked with the CDC25A (Phospho-Ser75) peptide.

## Contact information

Orders: order.cn@immunoway.com  
Support: support.cn@immunoway.com  
Telephone: 400-8787-807(China)  
Website: http://www.immunoway.com.cn  
Address: 2200 Ringwood Ave San Jose, CA 95131 USA



Please scan the QR code  
to access additional  
product information:  
**Cdc25A (Phospho  
Ser75) Rabbit pAb**

---

For Research Use Only. Not for Use in Diagnostic Procedures.

[Antibody](#) | [ELISA Kits](#) | [Protein](#) | [Reagents](#)