

CaV α 2 δ 3 Rabbit pAb

CatalogNo: YN5636

Key Features

Host Species

- Rabbit

Reactivity

- Human, Mouse, Rat

Applications

- WB

MW

- 120kD (Observed)

Isotype

- IgG

Storage

Storage* -15°C to -25°C/1 year (Do not lower than -25°C)

Formulation Liquid in PBS containing 50% glycerol, 0.5% BSA and 0.02% sodium azide.

Recommended Dilution Ratios

WB 1:1000-2000

Basic Information

Clonality Polyclonal

Immunogen Information

Immunogen Synthetic Peptide of CaV α 2 δ 3 AA range: 500-580

Specificity CaV α 2 δ 3 protein(A210) detects endogenous levels of CaV α 2 δ 3

Target Information

Gene name CACNA2D3

Protein Name Voltage-dependent calcium channel subunit alpha-2/delta-3 (Voltage-gated calcium channel subunit alpha-2/delta-3) [Cleaved into: Voltage-dependent calcium channel subunit alpha-2-3; Voltage-dependent calcium channel subunit delta-3]

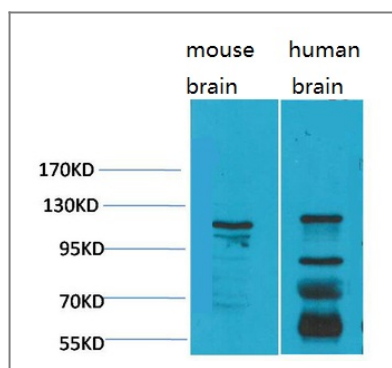
| Organism | Gene ID | UniProt ID |
|----------|-------------------------|--------------------------|
| Human | 55799 ; | Q8IZS8 ; |
| Mouse | | Q9Z1L5 ; |
| Rat | | Q8CFG5 ; |

Cellular Localization Membrane ; Single-pass type I membrane protein .

Tissue specificity Only detected in brain. Not present in lung, testis, aorta, spleen, jejunum, ventricular muscle and kidney (at protein level). According to PubMed:11687876, it is brain-specific, while according to PubMed:11245980, it is widely expressed.

Function Domain:The MIDAS-like motif in the VWFA domain binds divalent metal cations and is required to promote trafficking of the alpha-1 (CACNA1) subunit to the plasma membrane by an integrin-like switch.,Function:The alpha-2/delta subunit of voltage-dependent calcium channels regulates calcium current density and activation/inactivation kinetics of the calcium channel. Acts as a regulatory subunit for P/Q-type calcium channel (CACNA1A), N-type (CACNA1B), L-type (CACNA1C OR CACNA1D) but not T-type (CACNA1G).,miscellaneous:In contrast to CACNA2D1 and CACNA2D2, it does not bind gabapentin, an antiepileptic drug.,PTM:May be proteolytically processed into subunits alpha-2-3 and delta-3 that are disulfide-linked. It is however unclear whether such cleavage really takes place in vivo and has a functional role.,PTM:N-glycosylated.,similarity:Belongs to the calcium channel subunit alpha-2/delta family.,similarity:Contains 1 cache domain.,similarity:Contains 1 VWFA domain.,subunit:Dimer formed of alpha-2-2 and delta-2 chains; disulfide-linked. Voltage-dependent calcium channels are multisubunit complexes, consisting of alpha-1 (CACNA1), alpha-2 (CACNA2D), beta (CACNB) and delta (CACNA2D) subunits in a 1:1:1:1 ratio.,tissue specificity:Only detected in brain. Not present in lung, testis, aorta, spleen, jejunum, ventricular muscle and kidney (at protein level). According to PubMed:11687876, it is brain-specific, while according to PubMed:11245980, it is widely expressed.,

Validation Data



Western blot analysis of 1) Mouse Brain Tissue, 2) Human Brain Tissue, with CaV α 263 Rabbit pAb diluted at 1:2,000.

Contact information

Orders: order.cn@immunoway.com
Support: support.cn@immunoway.com
Telephone: 400-8787-807(China)
Website: <http://www.immunoway.com.cn>
Address: 2200 Ringwood Ave San Jose, CA 95131 USA



Please scan the QR code
to access additional
product information:
CaV α 2 δ 3 Rabbit pAb

For Research Use Only. Not for Use in Diagnostic Procedures.

[Antibody](#) | [ELISA Kits](#) | [Protein](#) | [Reagents](#)