

IL18 Rabbit pAb

CatalogNo: YN1926 Orthogonal Validated 

Key Features

Host Species

- Rabbit

Reactivity

- Human, Mouse, Rat

Applications

- WB, IF, ELISA

MW

- 21kD (Observed)

Isotype

- IgG

Storage

Storage* -15°C to -25°C/1 year (Do not lower than -25°C)

Formulation Liquid in PBS containing 50% glycerol, 0.5% BSA and 0.02% sodium azide.

Recommended Dilution Ratios

WB 1:500-2000

IF 1:100-300

ELISA 1:5000-20000

Not yet tested in other applications.

Basic Information

Clonality Polyclonal

Immunogen Information

Immunogen Synthesized peptide derived from part region of human protein. AA range:9-109

Specificity IL18 Polyclonal Antibody detects endogenous levels of protein.

Target Information

Gene name IL18 IGIF IL1F4

Protein Name Interleukin-18 (IL-18) (Ibocataekin) (Interferon gamma-inducing factor) (IFN-gamma-inducing factor) (Interleukin-1 gamma) (IL-1 gamma)

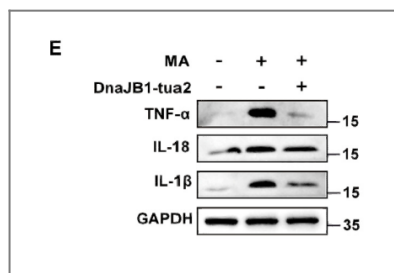
Organism	Gene ID	UniProt ID
Human	3606;	Q14116;
Mouse		P70380;
Rat		P97636;

Cellular Localization Cytoplasm . Secreted . The precursor is cytosolic (PubMed:33883744). In response to inflammasome-activating signals, cleaved and secreted (PubMed:33883744). Mature form is secreted and released in the extracellular milieu by passing through the gasdermin-D (GSDMD) pore (PubMed:33883744). In contrast, the precursor form is not released, due to the presence of an acidic region that is proteolytically removed by CASP1 during maturation (PubMed:33883744). The secretion is dependent on protein unfolding and facilitated by the cargo receptor TMED10 (PubMed:32272059). .

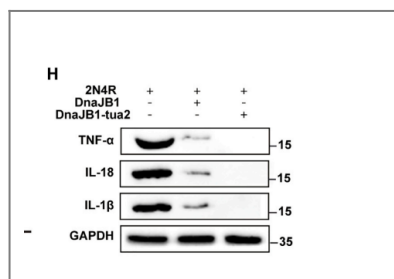
Tissue specificity Liver,Peripheral blood,Urinary bladder,

Function Function:Augments natural killer cell activity in spleen cells and stimulates interferon gamma production in T-helper type I cells.,online information:Interleukin-1 entry,similarity:Belongs to the IL-1 family.,

Validation Data



A novel gene therapy for methamphetamine- induced cognitive disorder with a hyper-acidified fusion variant of DnaJB1 Molecular Therapy-Nucleic Acids Zhurong Zou WB Mouse hippocampus BV2 cell



A novel gene therapy for methamphetamine- induced cognitive disorder with a hyper-acidified fusion variant of DnaJB1 Molecular Therapy-Nucleic Acids Zhurong Zou WB Mouse hippocampus BV2 cell

Contact information

Orders: order.cn@immunoway.com
Support: support.cn@immunoway.com
Telephone: 400-8787-807(China)
Website: http://www.immunoway.com.cn
Address: 2200 Ringwood Ave San Jose, CA 95131 USA



Please scan the QR code
to access additional
product information:
IL18 Rabbit pAb

For Research Use Only. Not for Use in Diagnostic Procedures.

[Antibody](#) | [ELISA Kits](#) | [Protein](#) | [Reagents](#)