

SPA9 Rabbit pAb

CatalogNo: YN1287

Key Features

Host Species

- Rabbit

Reactivity

- Human, Mouse

Applications

- WB, ELISA

MW

- 45kD (Observed)

Isotype

- IgG

Storage

Storage* -15°C to -25°C/1 year (Do not lower than -25°C)

Formulation Liquid in PBS containing 50% glycerol, 0.5% BSA and 0.02% sodium azide.

Recommended Dilution Ratios

WB 1:500-2000

ELISA 1:5000-20000

Basic Information

Clonality Polyclonal

Immunogen Information

Immunogen Synthesized peptide derived from part region of human protein. AA range:1-71

Specificity SPA9 Polyclonal Antibody detects endogenous levels of protein.

Target Information

Gene name SERPINA9 GCET1 SERPINA11 UNQ692/PRO1337

Protein Name Serpin A9 (Centerin) (Germinal center B-cell-expressed transcript 1 protein)

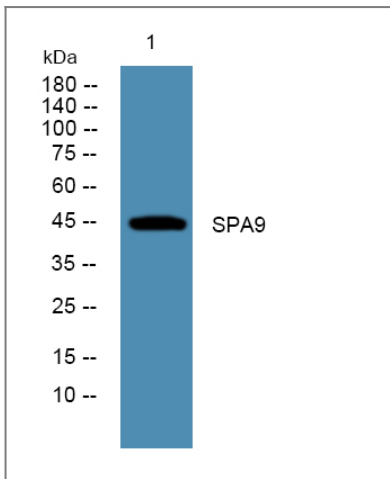
| Organism | Gene ID | UniProt ID |
|----------|--------------------------|--------------------------|
| Human | 327657 ; | Q86WD7 ; |
| Mouse | | Q9D7D2 ; |

Cellular Localization [Isoform 1]: Secreted.; [Isoform 2]: Cytoplasm .; [Isoform 3]: Cytoplasm .; [Isoform 4]: Cytoplasm .; [Isoform 5]: Cytoplasm .; [Isoform 6]: Cytoplasm .; [Isoform 7]: Membrane ; Single-pass type II membrane protein .

Tissue specificity Highly expressed in normal germinal center (GC) B-cells and GC B-cell-derived malignancies.

Function similarity:Belongs to the serpin family. ,tissue specificity:Highly expressed in normal germinal center (GC) B-cells and GC B-cell-derived malignancies. ,

Validation Data



Western blot analysis of lysates from K562 cells, primary antibody was diluted at 1:1000, 4°C over night

Contact information

Orders: order.cn@immunoway.com
Support: support.cn@immunoway.com
Telephone: 400-8787-807(China)
Website: <http://www.immunoway.com.cn>
Address: 2200 Ringwood Ave San Jose, CA 95131 USA



Please scan the QR code to access additional product information:
SPA9 Rabbit pAb