

## CALL6 Rabbit pAb

CatalogNo: YN0535

### Key Features

**Host Species**

- Rabbit

**Reactivity**

- Human

**Applications**

- WB,ELISA

**MW**

- 19kD (Observed)

**Isotype**

- IgG

### Storage

**Storage\*** -15°C to -25°C/1 year(Do not lower than -25°C)**Formulation** Liquid in PBS containing 50% glycerol, 0.5% BSA and 0.02% sodium azide.

### Recommended Dilution Ratios

**WB 1:500-2000****ELISA 1:5000-20000**

### Basic Information

**Clonality** Polyclonal

### Immunogen Information

**Immunogen** Synthesized peptide derived from part region of human protein. AA range:1-74**Specificity** CALL6 Polyclonal Antibody detects endogenous levels of protein.

### Target Information

**Gene name** CALML6 CAGLP CALGP

**Protein Name** Calmodulin-like protein 6 (Calglandulin-like protein)

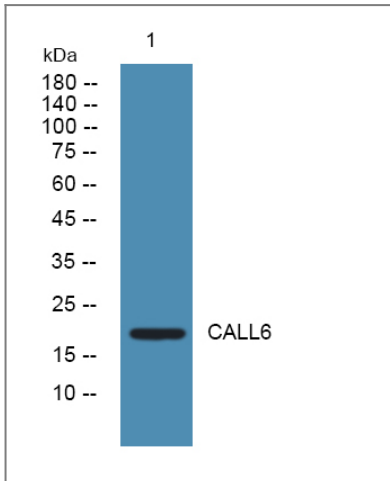
Organism	Gene ID	UniProt ID
Human	<a href="#">163688;</a>	<a href="#">Q8TD86;</a>

**Cellular Localization** Cytoplasm . Nucleus .

**Tissue specificity** Expressed in prostate, thymus, heart, skeleton muscle, bone marrow and ovary.

**Function** similarity:Belongs to the calmodulin family. Calglandulin subfamily.,similarity:Contains 4 EF-hand domains.,tissue specificity:Expressed in prostate, thymus, heart, skeleton muscle, bone marrow and ovary.,

## Validation Data



Western blot analysis of lysates from A431 cells, primary antibody was diluted at 1:1000, 4°over night

## Contact information

Orders: [order.cn@immunoway.com](mailto:order.cn@immunoway.com)  
Support: [support.cn@immunoway.com](mailto:support.cn@immunoway.com)  
Telephone: 400-8787-807(China)  
Website: <http://www.immunoway.com.cn>  
Address: 2200 Ringwood Ave San Jose, CA 95131 USA



Please scan the QR code to access additional product information:  
**CALL6 Rabbit pAb**