

## RT15 Rabbit pAb

CatalogNo: YN0344

### Key Features

#### Host Species

- Rabbit

#### Reactivity

- Human, Mouse

#### Applications

- WB, ELISA

#### MW

- 28kD (Observed)

#### Isotype

- IgG

### Storage

**Storage\*** -15°C to -25°C/1 year (Do not lower than -25°C)

**Formulation** Liquid in PBS containing 50% glycerol, 0.5% BSA and 0.02% sodium azide.

### Recommended Dilution Ratios

**WB 1:500-2000**

**ELISA 1:5000-20000**

### Basic Information

**Clonality** Polyclonal

### Immunogen Information

**Immunogen** Synthesized peptide derived from human protein . at AA range: 80-160

**Specificity** RT15 Polyclonal Antibody detects endogenous levels of protein.

### Target Information

**Gene name** MRPS15 RPMS15 DC37

**Protein Name** 28S ribosomal protein S15, mitochondrial (MRP-S15) (S15mt)

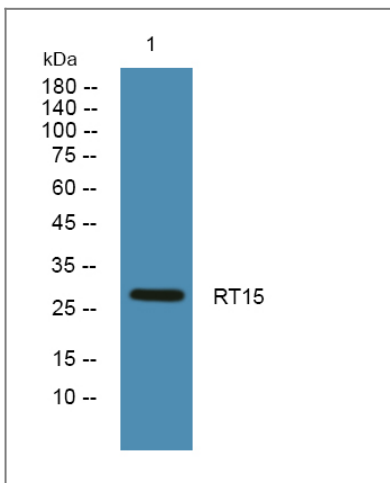
Organism	Gene ID	UniProt ID
Human	<a href="#">64960</a> ;	<a href="#">P82914</a> ;
Mouse		<a href="#">Q9DC71</a> ;
Rat		<a href="#">Q5XI37</a> ;

**Cellular Localization** Mitochondrion .

**Tissue specificity** Aorta endothelial cell ,Dendritic cell ,Skin ,

**Function** similarity:Belongs to the ribosomal protein S15P family. ,subunit:Component of the mitochondrial ribosome small subunit (28S) which comprises a 12S rRNA and about 30 distinct proteins. ,

## Validation Data



Western blot analysis of lysates from Jurkat cells, primary antibody was diluted at 1:1000, 4°C over night

## Contact information

Orders: [order.cn@immunoway.com](mailto:order.cn@immunoway.com)  
Support: [support.cn@immunoway.com](mailto:support.cn@immunoway.com)  
Telephone: 400-8787-807(China)  
Website: <http://www.immunoway.com.cn>  
Address: 2200 Ringwood Ave San Jose, CA 95131 USA



Please scan the QR code to access additional product information:  
**RT15 Rabbit pAb**