

## SREBP-2 Rabbit pAb

CatalogNo: YN0037 **Orthogonal Validated** 

### Key Features

#### Host Species

- Rabbit

#### Reactivity

- Human, Mouse, Rat

#### Applications

- WB, ELISA

#### MW

- 125kD (Observed)

#### Isotype

- IgG

### Storage

**Storage\*** -15°C to -25°C/1 year (Do not lower than -25°C)

**Formulation** Liquid in PBS containing 50% glycerol, 0.5% BSA and 0.02% sodium azide.

### Recommended Dilution Ratios

**WB 1:500-2000**

**ELISA 1:5000-20000**

### Basic Information

**Clonality** Polyclonal

### Immunogen Information

**Immunogen** Synthesized peptide derived from human protein . at AA range: 390-470

**Specificity** SRBP2 Polyclonal Antibody detects endogenous levels of protein.

### Target Information

**Gene name** SREBF2 BHLHD2 SREBP2

**Protein Name** Sterol regulatory element-binding protein 2 (SREBP-2) (Class D basic helix-loop-helix protein 2) (bHLHd2) (Sterol regulatory element-binding transcription factor 2) [Cleaved into: Processed sterol regulatory element-binding protein 2]

Organism	Gene ID	UniProt ID
Human	<a href="#">6721</a> ;	<a href="#">Q12772</a> ;
Mouse		<a href="#">Q3U1N2</a> ;
Rat		<a href="#">Q3T1I5</a> ;

**Cellular Localization**

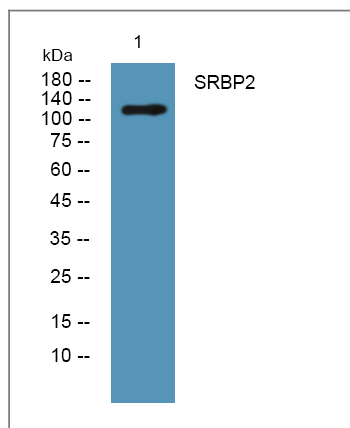
[Sterol regulatory element-binding protein 2]: Endoplasmic reticulum membrane ; Multi-pass membrane protein . Golgi apparatus membrane ; Multi-pass membrane protein . Cytoplasmic vesicle , COPII-coated vesicle membrane ; Multi-pass membrane protein . At high sterol concentrations , the SCAP-SREBP is retained in the endoplasmic reticulum (PubMed:32322062) . Low sterol concentrations promote recruitment into COPII-coated vesicles and transport of the SCAP-SREBP to the Golgi , where it is processed (PubMed:32322062) . . ; [Processed sterol regulatory element-binding protein 2]: Nucleus . Transported into the nucleus with the help of importin-beta. Dimerization of the bHLH domain is a prerequisite for importin beta-dependent nuclear import. .

**Tissue specificity** Ubiquitously expressed in adult and fetal tissues.

**Function**

Function:Transcriptional activator required for lipid homeostasis. Regulates transcription of the LDL receptor gene as well as the cholesterol and to a lesser degree the fatty acid synthesis pathway (By similarity) . Binds the sterol regulatory element 1 (SRE-1) (5'-ATCACCCAC-3') found in the flanking region of the LDLR and HMG-CoA synthase genes. ,PTM:At low cholesterol the SCAP/SREBP complex is recruited into COPII vesicles for export from the ER. In the Golgi complex SREBPs are cleaved sequentially by site-1 and site-2 protease. The first cleavage by site-1 protease occurs within the luminal loop , the second cleavage by site-2 protease occurs within the first transmembrane domain and releases the transcription factor from the Golgi membrane. Apoptosis triggers cleavage by the cysteine proteases caspase-3 and caspase-7. ,similarity:Belongs to the SREBP family. ,similarity:Contains 1 basic helix-loop-helix (bHLH) domain. ,subcellular location:Moves from the endoplasmic reticulum to the Golgi in the absence of sterols. ,subunit:Forms a tight complex with SCAP in the ER membrane. Efficient DNA binding of the soluble transcription factor fragment requires dimerization with another bHLH protein. Interacts with LMNA. ,tissue specificity:Ubiquitously expressed in adult and fetal tissues. ,

**Validation Data**



Western blot analysis of lysates from HCT116 cells, primary antibody was diluted at 1:1000, 4°C over night

## Contact information

Orders: order.cn@immunoway.com  
Support: support.cn@immunoway.com  
Telephone: 400-8787-807(China)  
Website: <http://www.immunoway.com.cn>  
Address: 2200 Ringwood Ave San Jose, CA 95131 USA



Please scan the QR code  
to access additional  
product information:  
**SREBP-2 Rabbit pAb**

---

For Research Use Only. Not for Use in Diagnostic Procedures.

[Antibody](#) | [ELISA Kits](#) | [Protein](#) | [Reagents](#)