

## STX17 (PT1752R) PT™ Rabbit mAb

CatalogNo: YM9595 **Recombinant** 

### Key Features

#### Host Species

- Rabbit

#### Reactivity

- Human, Mouse, Rat

#### Applications

- WB, IHC, IF, ELISA

#### MW

- 33kD (Calculated)  
38kD (Observed)

#### Isotype

- IgG, Kappa

### Storage

**Storage\*** -15°C to -25°C/1 year (Do not lower than -25°C)

**Formulation** PBS, 50% glycerol, 0.05% Proclin 300, 0.05% BSA

### Recommended Dilution Ratios

**IHC 1:200-1:1000**

**WB 1:2000-1:10000**

**IF 1:200-1:1000**

**ELISA 1:5000-1:20000**

### Basic Information

**Clonality** Monoclonal

**Clone Number** PT1752R

### Immunogen Information

**Immunogen** The specific immunogen used to produce this antibody is proprietary information.

**Specificity** Endogenous

## Target Information

**Gene name** STX17

**Protein Name** STX17

Organism	Gene ID	UniProt ID
Human	<a href="#">55014</a> ;	<a href="#">P56962</a> ;
Mouse	<a href="#">67727</a> ;	<a href="#">Q9D0I4</a> ;
Rat	<a href="#">252853</a> ;	<a href="#">Q9Z158</a> ;

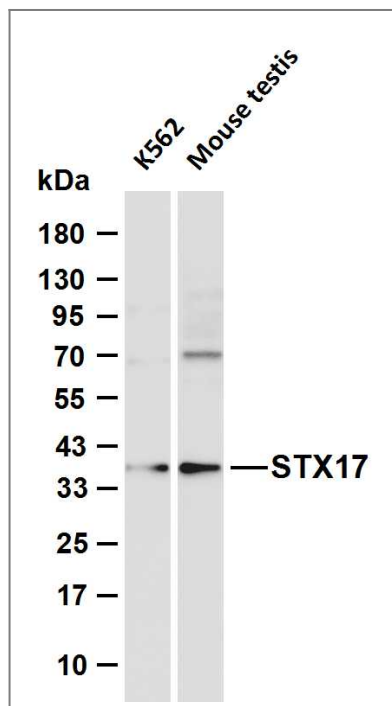
### Cellular Localization

Endoplasmic reticulum membrane ; Multi-pass membrane protein . Smooth endoplasmic reticulum membrane ; Multi-pass membrane protein . Endoplasmic reticulum-Golgi intermediate compartment membrane ; Multi-pass membrane protein . Cytoplasmic vesicle , autophagosome membrane ; Multi-pass membrane protein . Cytoplasmic vesicle , COPII-coated vesicle membrane ; Multi-pass membrane protein . Cytoplasm , cytosol . Mitochondrion membrane ; Multi-pass membrane protein . Has a hairpin-like insertion into membranes. Localizes to the completed autophagosome membrane upon cell starvation (PubMed:23217709) . .

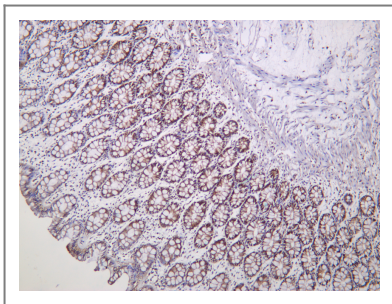
### Function

Function:Implicated in vesicle trafficking to lysosomes. Could be involved in processes related to cell division. ,similarity:Belongs to the syntaxin family. ,similarity:Contains 1 t-SNARE coiled-coil homology domain. ,subcellular location:Appears to be associated with a membrane compartment , perhaps a subset of the ER such as exit or entrance sites. ,

## Validation Data



Various whole cell lysates were separated by 4-20% SDS-PAGE, and the membrane was blotted with anti-STX17 (PT1752R) antibody. The HRP-conjugated Goat anti-Rabbit IgG (H + L) antibody was used to detect the antibody. Lane 1: K562 Lane 2: Mouse testis Predicted band size: 33kDa Observed band size: 38kDa



Human colon was stained with anti-STX17 (PT1752R) Rabbit antibody

## Contact information

Orders: [order.cn@immunoway.com](mailto:order.cn@immunoway.com)  
Support: [support.cn@immunoway.com](mailto:support.cn@immunoway.com)  
Telephone: 400-8787-807(China)  
Website: <http://www.immunoway.com.cn>  
Address: 2200 Ringwood Ave San Jose, CA 95131 USA



Please scan the QR code to access additional product information:  
**STX17 (PT1752R)**  
**PT™ Rabbit mAb**

For Research Use Only. Not for Use in Diagnostic Procedures.

[Antibody](#) | [ELISA Kits](#) | [Protein](#) | [Reagents](#)