

# Histone H3 (Citrulline Arg2+Arg8+Arg17) PT™ Rabbit mAb

CatalogNo: YM9591 **Recombinant** 

## Key Features

### Host Species

- Rabbit

### Reactivity

- Human, Mouse, Rat

### Applications

- WB, IHC, IF, IP, ELISA

### MW

- 15kD (Calculated)  
15kD (Observed)

### Isotype

- IgG, Kappa

## Storage

**Storage\*** -15°C to -25°C/1 year (Do not lower than -25°C)

**Formulation** PBS, 50% glycerol, 0.05% Proclin 300, 0.05% BSA

## Recommended Dilution Ratios

**WB 1:1000-1:5000**

**IHC 1:500-1:2000**

**IF 1:200-1:1000**

**ELISA 1:5000-1:20000**

**IP 1:50-1:200**

## Basic Information

**Clonality** Multiclonal

## Immunogen Information

**Immunogen** The specific immunogen used to produce this antibody is proprietary information.

## Specificity

Histone H3 (Citrulline Arg2+Arg8+Arg17) antibody detects endogenous levels of Histone H3 only when citrullinated at Arg2 or Arg8 or Arg17. This antibody does not recognize citrullinated at other sites. The name of modified sites may be influenced by many factors, such as species (the modified site was not originally found in human samples) and the change of protein sequence (the previous protein sequence is incomplete, and the protein sequence may be prolonged with the development of protein sequencing technology). When naming, we will use the "numbers" in historical reference to keep the sites consistent with the reports. The antibody binds to the following modification sequence (lowercase letters are modification sites):ArTKQTArKS

## Target Information

**Gene name** HIST1H3A H3FA; HIST1H3B H3FL; HIST1H3C H3FC; HIST1H3D H3FB; HIST1H3E H3FD; HIST1H3F H3FI; HIST1H3G H3FH; HIST1H3H H3FK; HIST1H3I H3FF; HIST1H3J H3FJ

**Protein Name** Histone H3 (citrulline R2 + R8 + R17)

Organism	Gene ID	UniProt ID
Human	<a href="#">8350</a> ; <a href="#">8351</a> ; <a href="#">8352</a> ; <a href="#">8353</a> ; <a href="#">8354</a> ; <a href="#">8355</a> ; <a href="#">8356</a> ; <a href="#">8357</a> ; <a href="#">8358</a> ; <a href="#">8968</a> ;	<a href="#">P68431</a> ;
Mouse	<a href="#">319152</a> ;	<a href="#">P68433</a> ;
Rat	<a href="#">291159</a> ;	<a href="#">Q6LED0</a> ;

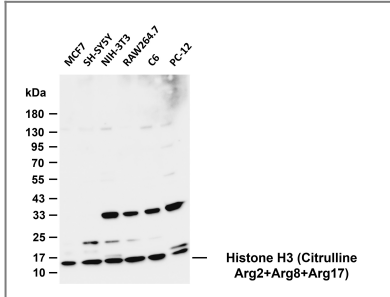
**Cellular Localization** Nucleus. Chromosome.

**Tissue specificity** Blood ,Epithelium ,Kidney ,Lung ,Ovary ,Spleen ,Uterus ,

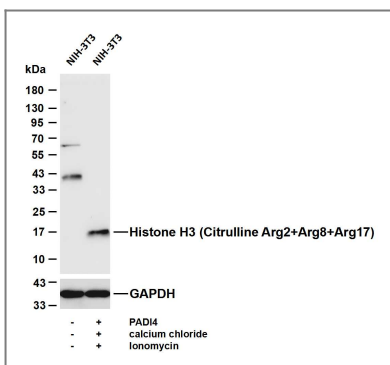
## Function

Caution: Was originally (PubMed:2587222) thought to originate from mouse. ,developmental stage: Expressed during S phase , then expression strongly decreases as cell division slows down during the process of differentiation. ,Function: Core component of nucleosome. Nucleosomes wrap and compact DNA into chromatin , limiting DNA accessibility to the cellular machineries which require DNA as a template. Histones thereby play a central role in transcription regulation , DNA repair , DNA replication and chromosomal stability. DNA accessibility is regulated via a complex set of post-translational modifications of histones , also called histone code , and nucleosome remodeling. ,mass spectrometry: Monoisotopic with N-acetylserine PubMed:16457589 ,miscellaneous: This histone is only present in mammals and is enriched in acetylation of Lys-15 and dimethylation of Lys-10 (H3K9me2) . ,PTM: Acetylation is generally linked to gene activation. Acetylation on Lys-10 (H3K9ac) impairs methylation at Arg-9 (H3R8sme2) . Acetylation on Lys-19 (H3K18ac) and Lys-24 (H3K24ac) favors methylation at Arg-18 (H3R17me) . ,PTM: Asymmetric dimethylation at Arg-18 (H3R17me2a) by CARM1 is linked to gene activation. Symmetric dimethylation at Arg-9 (H3R8sme2) by PRMT5 is linked to gene repression. Asymmetric dimethylation at Arg-3 (H3R2me2a) by PRMT6 is linked to gene repression and is mutually exclusive with H3 Lys-5 methylation (H3K4me2 and H3K4me3) . H3R2me2a is present at the 3' of genes regardless of their transcription state and is enriched on inactive promoters , while it is absent on active promoters. ,PTM: Citrullination at Arg-9 (H3R8ci) and/or Arg-18 (H3R17ci) by PADI4 impairs methylation and represses transcription. ,PTM: Deiminated on Arg-4 in granulocytes upon calcium entry. ,PTM: Methylation at Lys-5 (H3K4me) , Lys-37 (H3K36me) and Lys-80 (H3K79me) are linked to gene activation. Methylation at Lys-5 (H3K4me) facilitates subsequent acetylation of H3 and H4. Methylation at Lys-80 (H3K79me) is associated with DNA double-strand break (DSB) responses and is a specific target for TP53BP1. Methylation at Lys-10 (H3K9me) and Lys-28 (H3K27me) are linked to gene repression. Methylation at Lys-10 (H3K9me) is a specific target for HP1 proteins (CBX1 , CBX3 and CBX5) and prevents subsequent phosphorylation at Ser-11 (H3S10ph) and acetylation of H3 and H4. Methylation at Lys-5 (H3K4me) and Lys-80 (H3K79me) require preliminary monoubiquitination of H2B at 'Lys-120'. Methylation at Lys-10 (H3K9me) and Lys-28 (H3K27me) are enriched in inactive X chromosome chromatin. ,PTM: Monoubiquitination of Lys-120 by RING1 and RNF2/RING2 complex gives a specific tag for epigenetic transcriptional repression and participates in X chromosome inactivation of female mammals. It is involved in the initiation of both imprinted and random X inactivation. Ubiquitinated H2A is enriched in inactive X chromosome chromatin. Ubiquitination of H2A functions downstream of methylation of 'Lys-27' of histone H3. Monoubiquitination of Lys-120 by RNF2/RING2 can also be induced by ultraviolet and may be involved in DNA repair. Following DNA double-strand breaks (DSBs) , it is ubiquitinated through 'Lys-63' linkage of ubiquitin moieties by the E2 ligase UBE2N and the E3 ligases RNF8 and RNF168 , leading to the recruitment of repair proteins to sites of DNA damage. Monoubiquitination and ionizing radiation-induced 'Lys-63'-linked ubiquitination are distinct events. ,PTM: Phosphorylated at Thr-4 (H3T3ph) by GSG2/haspin during prophase and dephosphorylated during anaphase. At centromeres , specifically phosphorylated at Thr-12 (H3T11ph) from prophase to early anaphase , probably by DAPK3 (By similarity) . Phosphorylation at Ser-11 (H3S10ph) by AURKB is crucial for chromosome condensation and cell-cycle progression during mitosis and meiosis. In addition phosphorylation at Ser-11 (H3S10ph) by RPS6KA4 and RPS6KA5 is important during interphase because it enables the transcription of genes following external stimulation , like mitogens , stress , growth factors or UV irradiation and result in the activation of genes , such as c-fos and c-jun. Phosphorylation at Ser-11 , which is linked to gene activation , prevents methylation at Lys-10 (H3K9me) but facilitates acetylation of H3 and H4. Phosphorylation at Ser-11 (H3S10ph) by AURKB mediates the dissociation of HP1 proteins (CBX1 , CBX3 and CBX5) from heterochromatin. Phosphorylation at Ser-11 (H3S10ph) is also an essential regulatory mechanism for neoplastic cell transformation. Phosphorylated at Ser-29 (H3S28ph) by MLTK isoform 1 , RPS6KA5 or AURKB during mitosis or upon ultraviolet B irradiation. ,PTM: Phosphorylated at Thr-4 (H3T3ph) by GSG2/haspin during prophase and dephosphorylated during anaphase. At centromeres , specifically phosphorylated at Thr-12 (H3T11ph) from prophase to early anaphase , probably by DAPK3. Phosphorylation at Ser-11 (H3S10ph) by AURKB is crucial for chromosome condensation and cell-cycle progression during mitosis and meiosis. In addition phosphorylation at Ser-11 (H3S10ph) by RPS6KA4 and RPS6KA5 is important during interphase because it enables the transcription of genes following external stimulation , like mitogens , stress , growth factors or UV irradiation and result in the activation of genes , such as c-fos and c-jun. Phosphorylation at Ser-11 (H3S10ph) , which is linked to gene activation , prevents methylation at Lys-10 (H3K9me) but facilitates acetylation of H3 and H4. Phosphorylation at Ser-11 (H3S10ph) by AURKB mediates the dissociation of HP1 proteins (CBX1 , CBX3 and CBX5) from heterochromatin. Phosphorylation at Ser-11 (H3S10ph) is also an essential regulatory mechanism for neoplastic cell transformation. Phosphorylated at Ser-29 by MLTK isoform 1 , RPS6KA5 or AURKB during mitosis or upon ultraviolet B irradiation. ,PTM: Phosphorylation on Ser-2 is enhanced during mitosis. Phosphorylation on Ser-2 by RPS6KA5/MSK1 directly represses transcription. Acetylation of H3 inhibits Ser-2 phosphorylation by RPS6KA5/MSK1. ,PTM: Symmetric dimethylation on Arg-4 by the PRDM1/PRMT5 complex may play a crucial role in the germ-cell lineage. ,PTM: The chromatin-associated form is phosphorylated on Thr-121 during mitosis. ,PTM: Ubiquitinated by the CUL4-DDB-RBX1 complex in response to ultraviolet irradiation. This may weaken the interaction between histones and DNA and facilitate DNA accessibility to repair proteins. ,similarity: Belongs to the histone H2A family. ,similarity: Belongs to the histone H3 family. ,subunit: The nucleosome is a histone octamer containing two molecules each of H2A , H2B , H3 and H4 assembled in one H3-H4 heterotetramer and two H2A-H2B heterodimers. The octamer wraps approximately 147 bp of DNA. ,subunit: The nucleosome is a histone octamer containing two molecules each of H2A , H2B , H3 and H4 assembled in one H3-H4 heterotetramer and two H2A-H2B heterodimers. The octamer wraps approximately 147 bp of DNA. During nucleosome assembly the chaperone ASF1A interacts with the histone H3-H4 heterodimer. ,

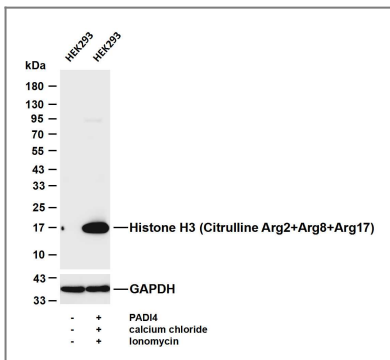
## Validation Data



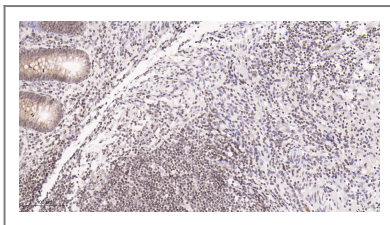
Various whole cell lysates were separated by 4-20% SDS-PAGE, and the membrane was blotted with anti-Histone H3 (Citrulline Arg2+Arg8+Arg17) antibody. The HRP-conjugated Goat anti-Rabbit IgG (H + L) antibody was used to detect the antibody. Lane 1: MCF7 Lane 2: SH-SY5Y Lane 3: NIH-3T3 Lane 4: RAW264.7 Lane 5: C6 Lane 6: PC-12 Predicted band size: 15kDa Observed band size: 15kDa



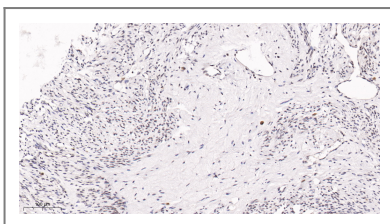
Various whole cell lysates were separated by 4-20% SDS-PAGE, and the membrane was blotted with anti-Histone H3 (Citrulline Arg2+Arg8+Arg17) antibody. The HRP-conjugated Goat anti-Rabbit IgG (H + L) antibody was used to detect the antibody. Lane 1: NIH-3T3 Lane 2: NIH-3T3 transfected with PADI4 treated with 10 mM calcium chloride and 10  $\mu$ M Ionomycin for 3 hours Predicted band size: 15kDa Observed band size: 17kDa



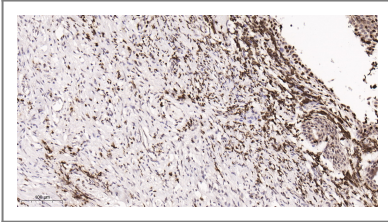
Various whole cell lysates were separated by 4-20% SDS-PAGE, and the membrane was blotted with anti-Histone H3 (Citrulline Arg2+Arg8+Arg17) antibody. The HRP-conjugated Goat anti-Rabbit IgG (H + L) antibody was used to detect the antibody. Lane 1: HEK293 Lane 2: HEK293 transfected with PADI4 treated with 10 mM calcium chloride and 10  $\mu$ M Ionomycin for 4 hours Predicted band size: 15kDa Observed band size: 15kDa



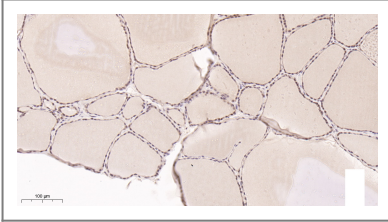
Immunohistochemical analysis of paraffin-embedded Human Appendix tissue. 1, primary Antibody was diluted at 1:200 (4°C C,overnight). 2, EDTA pH 9.0 was used for antibody retrieval (>98°C,20min). 3,Secondary antibody was diluted at 1:200 (room temperature, 30min).



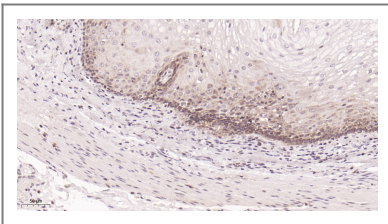
Immunohistochemical analysis of paraffin-embedded Human Uterus tissue. 1, primary Antibody was diluted at 1:200 (4°C C,overnight). 2, EDTA pH 9.0 was used for antibody retrieval (>98°C,20min). 3,Secondary antibody was diluted at 1:200 (room temperature, 30min).



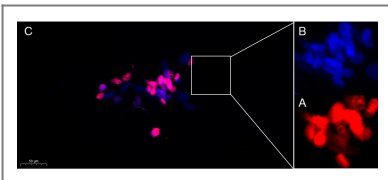
Immunohistochemical analysis of paraffin-embedded Human Cervix tissue. 1, primary Antibody was diluted at 1:200 (4°C C,overnight). 2, EDTA pH 9.0 was used for antibody retrieval (>98°C,20min). 3,Secondary antibody was diluted at 1:200 (room tempeRature, 30min).



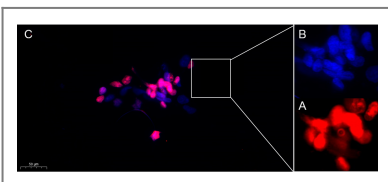
Immunohistochemical analysis of paraffin-embedded Human Thyroid tissue. 1, primary Antibody was diluted at 1:200 (4°C C,overnight). 2, EDTA pH 9.0 was used for antibody retrieval (>98°C,20min). 3,Secondary antibody was diluted at 1:200 (room tempeRature, 30min).



Immunohistochemical analysis of paraffin-embedded Human Esophagus tissue. 1, primary Antibody was diluted at 1:200 (4°C C,overnight). 2, EDTA pH 9.0 was used for antibody retrieval (>98°C,20min). 3,Secondary antibody was diluted at 1:200 (room tempeRature, 30min).



Immunofluorescence analysis of PADI4 transfected HEK293 cells. Picture A: Histone H3 (Citrulline Arg2+Arg8+Arg17) PT? Rabbit mAb (red). Picture B: DAPI (blue). Picture C: Merge of A+B



Immunofluorescence analysis of PADI4 transfected HEK293. Picture A: Histone H3 (Citrulline Arg2+Arg8+Arg17) Rabbit mAb (red). Picture B: DAPI (blue). Picture C: Merge of A+B

## Contact information

Orders: order.cn@immunoway.com  
Support: support.cn@immunoway.com  
Telephone: 400-8787-807(China)  
Website: <http://www.immunoway.com.cn>  
Address: 2200 Ringwood Ave San Jose, CA 95131 USA



Please scan the QR code to access additional product information:  
**Histone H3  
(Citrulline  
Arg2+Arg8+Arg17)  
PT™ Rabbit mAb**