

Calmodulin 1/2/3 (PT1470R) PT™ Rabbit mAb

CatalogNo: YM9312 **Recombinant** 

Key Features

Host Species

- Rabbit

Reactivity

- Human, Mouse, Rat

Applications

- WB, IHC, IF, IP, ELISA

MW

- 17kD (Calculated)
18kD (Observed)

Isotype

- IgG, Kappa

Storage

Storage* -15°C to -25°C/1 year (Do not lower than -25°C)

Formulation PBS, 50% glycerol, 0.05% Proclin 300, 0.05% BSA

Recommended Dilution Ratios

IHC 1:2000-1:10000

WB 1:2000-1:10000

IF 1:200-1:1000

ELISA 1:5000-1:20000

IP 1:50-1:200

Basic Information

Clonality Monoclonal

Clone Number PT1470R

Immunogen Information

Specificity Endogenous

Target Information

Gene name CALM1

Protein Name Calmodulin

Organism	Gene ID	UniProt ID
Human	801 ; 805 ; 808 ;	P0DP23 ; P0DP24 ; P0DP25 ;
Mouse	12313 ;	P0DP26 ;
Rat	24242 ;	P0DP29 ;

Cellular Localization

spindle pole,extracellular region,nucleus,nucleoplasm,cytoplasm,centrosome,cytosol,spindle microtubule,plasma membrane,voltage-gated potassium channel complex,sarcomere,growth cone,vesicle,calcium channel complex,G

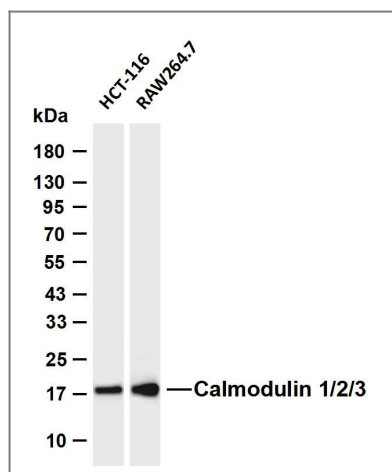
Tissue specificity

Blood,Brain,Cajal-Retzius cell,Fetal brain cortex,Lung,Lymph,Lymphoma,Muscle,Osteosarcoma,P

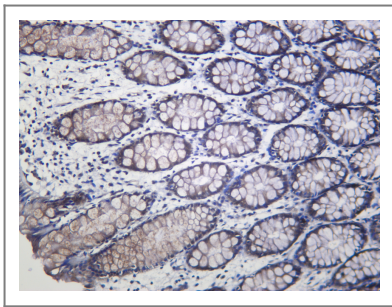
Function

Function:Calmodulin mediates the control of a large number of enzymes and other proteins by Ca(2+). Among the enzymes to be stimulated by the calmodulin-Ca(2+) complex are a number of protein kinases and phosphatases. Together with CEP110 and centrin, is involved in a genetic pathway that regulates the centrosome cycle and progression through cytokinesis.,miscellaneous:This protein has four functional calcium-binding sites.,PTM:Phosphorylation results in a decreased activity.,PTM:Ubiquitination results in a strongly decreased activity.,similarity:Belongs to the calmodulin family.,similarity:Contains 4 EF-hand domains.,subcellular location:Distributed throughout the cell during interphase, but during mitosis becomes dramatically localized to the spindle poles and the spindle microtubules.,subunit:Interacts with MYO1C (By similarity). Interacts with CEP97, CEP110, TTN/titin and SRY.,

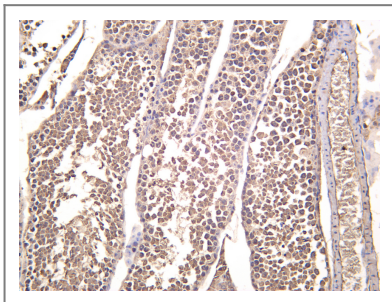
Validation Data



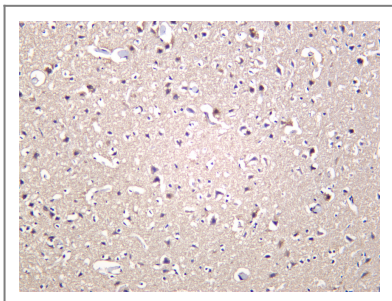
Various whole cell lysates were separated by 4-20% SDS-PAGE, and the membrane was blotted with anti-Calmodulin 1/2/3 (PT1470R) antibody. The HRP-conjugated Goat anti-Rabbit IgG (H + L) antibody was used to detect the antibody. Lane 1: HCT-116 Lane 2: RAW264.7 Predicted band size: 17kDa Observed band size: 18kDa



Human colon was stained with anti-Calmodulin 1/2/3 (PT1470R) Rabbit antibody



Mouse testis was stained with anti-Calmodulin 1/2/3 (PT1470R) Rabbit antibody



Rat brain was stained with anti-Calmodulin 1/2/3 (PT1470R) Rabbit antibody

Contact information

Orders: order.cn@immunoway.com
Support: support.cn@immunoway.com
Telephone: 400-8787-807(China)
Website: <http://www.immunoway.com.cn>
Address: 2200 Ringwood Ave San Jose, CA 95131 USA



Please scan the QR code to access additional product information:
Calmodulin 1/2/3 (PT1470R) PT™ Rabbit mAb

For Research Use Only. Not for Use in Diagnostic Procedures.

[Antibody](#) | [ELISA Kits](#) | [Protein](#) | [Reagents](#)