

Galectin-1 (PT1427R) PT™ Rabbit mAb

CatalogNo: YM9269 **Recombinant** 

Key Features

Host Species

- Rabbit

Reactivity

- Human, Mouse, Rat

Applications

- WB, IHC, IF, IP, ELISA

MW

- 15kD (Calculated)
15kD (Observed)

Isotype

- IgG, Kappa

Recommended Dilution Ratios

IHC 1:500-1:2000

WB 1:2000-1:10000

IF 1:200-1:1000

ELISA 1:5000-1:20000

IP 1:50-1:200

Storage

Storage* -15°C to -25°C/1 year (Do not lower than -25°C)**Formulation** PBS, 50% glycerol, 0.05% Proclin 300, 0.05% BSA

Basic Information

Clonality Monoclonal**Clone Number** PT1427R

Immunogen Information

Specificity Endogenous

Target Information

Gene name LGALS1

Protein Name Galectin-1

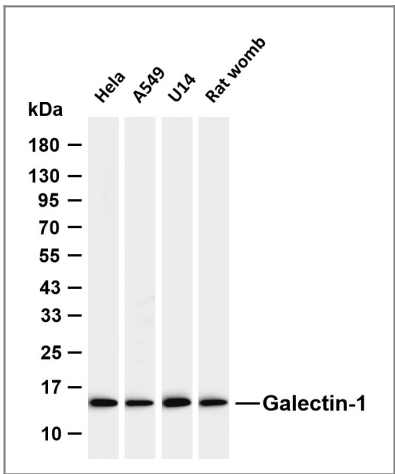
Organism	Gene ID	UniProt ID
Human	3956 ;	P09382 ;
Mouse		P16045 ;
Rat	56646 ;	P11762 ;

Cellular Localization Secreted, extracellular space, extracellular matrix . Cytoplasm . Secreted . Can be secreted; the secretion is dependent on protein unfolding and facilitated by the cargo receptor TMED10; it results in protein translocation from the cytoplasm into the ERGIC (endoplasmic reticulum-Golgi intermediate compartment) followed by vesicle entry and secretion. .

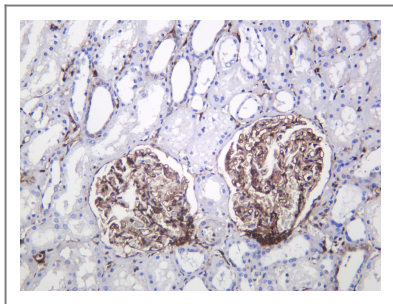
Tissue specificity Expressed in placenta, maternal decidua and fetal membranes. Within placenta, expressed in trophoblasts, stromal cells, villous endothelium, syncytiotrophoblast apical membrane and villous stroma. Within fetal membranes, expressed in amnion, chorioamniotic mesenchyma and chorion (at protein level). Expressed in cardiac, smooth, and skeletal muscle, neurons, thymus, kidney and hematopoietic cells.

Function Function:May regulate apoptosis, cell proliferation and cell differentiation. Binds beta-galactoside and a wide array of complex carbohydrates. Inhibits CD45 protein phosphatase activity and therefore the dephosphorylation of Lyn kinase.,online information:Galectin-1,similarity:Contains 1 galectin domain.,subunit:Homodimer. Binds LGALS3BP. Interacts with CD2, CD3, CD4, CD7, CD43 and CD45.,tissue specificity:Cardiac, smooth, and skeletal muscle, neurons, thymus, kidney, placenta and hematopoietic cells.,

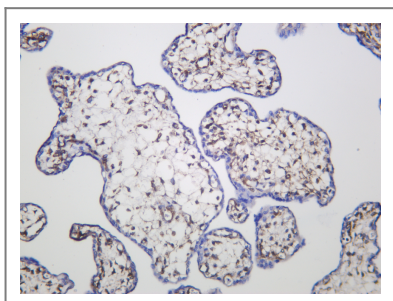
Validation Data



Various whole cell lysates were separated by 4-20% SDS-PAGE, and the membrane was blotted with anti-Galectin-1 (PT1427R) antibody. The HRP-conjugated Goat anti-Rabbit IgG (H + L) antibody was used to detect the antibody. Lane 1: HeLa Lane 2: A549 Lane 3: U14 Lane 4: Rat womb Predicted band size: 15kDa Observed band size: 15kDa



Human kidney was stained with anti-Galectin-1 (PT1427R) Rabbit antibody



Human placenta was stained with anti-Galectin-1 (PT1427R) Rabbit antibody

Contact information

Orders: order.cn@immunoway.com
Support: support.cn@immunoway.com
Telephone: 400-8787-807(China)
Website: <http://www.immunoway.com.cn>
Address: 2200 Ringwood Ave San Jose, CA 95131 USA



Please scan the QR code
to access additional
product information:
Galectin-1
(PT1427R) PT™
Rabbit mAb

For Research Use Only. Not for Use in Diagnostic Procedures.

[Antibody](#) | [ELISA Kits](#) | [Protein](#) | [Reagents](#)