

ErbB-4 (PT1155R) PT® Rabbit mAb

CatalogNo: YM8887 **Recombinant** 

Key Features

Host Species

- Rabbit

Reactivity

- Human, Mouse, Rat

Applications

- WB, IF, IP, ELISA

MW

- 147kD (Calculated)
- 180kD (Observed)

Isotype

- IgG, Kappa

Recommended Dilution Ratios

WB 1:2000-1:10000

IF 1:200-1:1000

ELISA 1:5000-1:20000

IP 1:50-1:200

Storage

Storage* -15°C to -25°C/1 year (Do not lower than -25°C)

Formulation PBS, 50% glycerol, 0.05% Proclin 300, 0.05% BSA

Basic Information

Clonality Monoclonal

Clone Number PT1155R

Immunogen Information

Specificity Endogenous

| Target Information

Gene name ERBB4,HER4

Protein Name Receptor tyrosine-protein kinase erbB-4

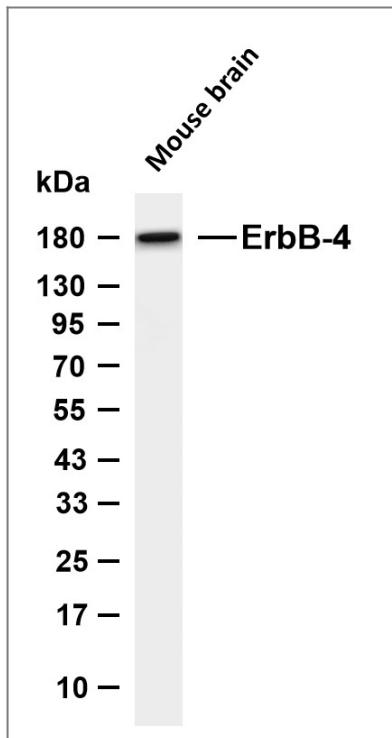
Organism	Gene ID	UniProt ID
Human	2066 ;	Q15303 ;
Mouse	13869 ;	Q61527 ;
Rat	59323 ;	Q62956 ;

Cellular Localization Cell membrane ; Single-pass type I membrane protein . In response to NRG1 treatment, the activated receptor is internalized.; [ERBB4 intracellular domain]: Nucleus . Mitochondrion . Following proteolytical processing E4ICD (E4ICD1 or E4ICD2 generated from the respective isoforms) is translocated to the nucleus. Significantly more E4ICD2 than E4ICD1 is found in the nucleus. E4ICD2 colocalizes with YAP1 in the nucleus.

Tissue specificity Expressed at highest levels in brain, heart, kidney, in addition to skeletal muscle, parathyroid, cerebellum, pituitary, spleen, testis and breast. Lower levels in thymus, lung, salivary gland, and pancreas. Isoform JM-A CYT-1 and isoform JM-B CYT-1 are expressed in cerebellum, but only the isoform JM-B is expressed in the heart.

Function Catalytic activity:ATP + a [protein]-L-tyrosine = ADP + a [protein]-L-tyrosine phosphate.,Domain:The WW-binding motifs mediate interaction with WWOX.,Function:Specifically binds and is activated by neuregulins, NRG-2, NRG-3, heparin-binding EGF-like growth factor, betacellulin and NTAK. Interaction with these factors induces cell differentiation. Not activated by EGF, TGF-A, and amphiregulin.,PTM:Isoform JM-A is processed but not isoform JM-B. So, they respectively represent cleavable and non-cleavable forms of the receptor.,PTM:Ligand-binding increases phosphorylation on tyrosine residues.,similarity:Belongs to the protein kinase superfamily. Tyr protein kinase family. EGF receptor subfamily.,similarity:Contains 1 protein kinase domain.,subunit:Homodimer or heterodimer with each of the other ERBB receptors (Potential). Interacts with PDZ domains of DLG2, DLG3, DLG4 and the syntrophin SNTB2. Interacts with CBFA2T3, MUC1 and WWOX.,tissue specificity:Expressed at highest levels in brain, heart, kidney, in addition to skeletal muscle, parathyroid, cerebellum, pituitary, spleen, testis and breast. Lower levels in thymus, lung, salivary gland, and pancreas. Isoform JM-A and isoform JM-B are expressed in cerebellum, but only the isoform JM-B is expressed in the heart.,

| Validation Data



Various whole cell lysates were separated by 4-20% SDS-PAGE, and the membrane was blotted with anti-ErbB-4 (PT1155R) antibody. The HRP-conjugated Goat anti-Rabbit IgG (H + L) antibody was used to detect the antibody. Lane 1: Mouse brain Predicted band size: 147kDa Observed band size: 180kDa

Contact information

Orders: order.cn@immunoway.com
 Support: support.cn@immunoway.com
 Telephone: 400-8787-807(China)
 Website: <http://www.immunoway.com.cn>
 Address: 2200 Ringwood Ave San Jose, CA 95131 USA



Please scan the QR code to access additional product information:
ErbB-4 (PT1155R)
PT® Rabbit mAb

For Research Use Only. Not for Use in Diagnostic Procedures.

[Antibody](#) | [ELISA Kits](#) | [Protein](#) | [Reagents](#)