

PAI-1 (PT1139R) PT® Rabbit mAb

CatalogNo: YM8871 **Recombinant** 

Key Features

Host Species

- Rabbit

Reactivity

- Human, Mouse, Rat

Applications

- WB, IHC, IF, IP, ELISA

MW

- 45kD (Calculated)
- 45kD (Observed)

Isotype

- IgG, Kappa

Recommended Dilution Ratios

IHC 1:200-1:1000

WB 1:2000-1:10000

IF 1:200-1:1000

ELISA 1:5000-1:20000

IP 1:50-1:200

Storage

Storage* -15°C to -25°C/1 year (Do not lower than -25°C)**Formulation** PBS, 50% glycerol, 0.05% Proclin 300, 0.05% BSA

Basic Information

Clonality Monoclonal**Clone Number** PT1139R

Immunogen Information

Specificity Endogenous

| Target Information

Gene name SERPINE1

Protein Name Plasminogen activator inhibitor 1

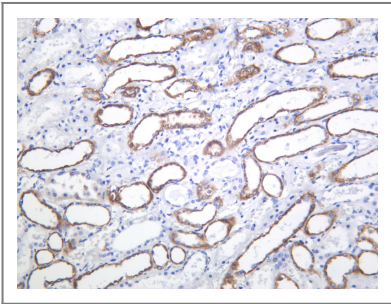
| Organism | Gene ID | UniProt ID |
|----------|-------------------------|--------------------------|
| Human | 5054 ; | P05121 ; |
| Mouse | | P22777 ; |
| Rat | 24617 ; | P20961 ; |

Cellular Localization Secreted .

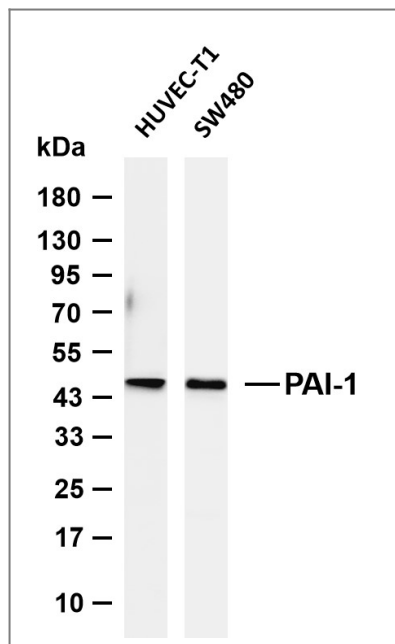
Tissue specificity Expressed in endothelial cells (PubMed:2430793, PubMed:3097076). Found in plasma, platelets, and hepatoma and fibrosarcoma cells.

Function Disease:Defects in SERPINE1 are the cause of plasminogen activator inhibitor-1 deficiency (PAI-1 deficiency) [MIM:173360]. This deficiency is characterized by abnormal bleeding due to SERPINE1 defect in the plasma.,Disease:High concentrations of SERPINE1 have been associated with thrombophilia [MIM:188050]; an autosomal dominant disorder in which affected individuals are prone to develop serious spontaneous thrombosis.,Function:This inhibitor acts as 'bait' for tissue plasminogen activator, urokinase, and protein C. Its rapid interaction with TPA may function as a major control point in the regulation of fibrinolysis.,online information:Plasminogen activator inhibitor-1 entry,PTM:Inactivated by proteolytic attack of the urokinase-type (u-PA) and the tissue-type (TPA), cleaving the 369-Arg-|-Met-370 bond.,similarity:Belongs to the serpin family.,subunit:Interacts with VTN. Binds LRP1B; binding is followed by internalization and degradation.,tissue specificity:Found in plasma and platelets and in endothelial, hepatoma and fibrosarcoma cells.,

| Validation Data



Human kidney was stained with anti-PAI-1 (PT1139R) Rabbit antibody



Various whole cell lysates were separated by 4-20% SDS-PAGE, and the membrane was blotted with anti-PAI-1 (PT1139R) antibody. The HRP-conjugated Goat anti-Rabbit IgG (H + L) antibody was used to detect the antibody. Lane 1: HUVEC-T1 Lane 2: SW480 Predicted band size: 45kDa Observed band size: 45kDa

Contact information

Orders: order.cn@immunoway.com
 Support: support.cn@immunoway.com
 Telephone: 400-8787-807(China)
 Website: <http://www.immunoway.com.cn>
 Address: 2200 Ringwood Ave San Jose, CA 95131 USA



Please scan the QR code to access additional product information:
PAI-1 (PT1139R)
PT® Rabbit mAb

For Research Use Only. Not for Use in Diagnostic Procedures.

[Antibody](#) | [ELISA Kits](#) | [Protein](#) | [Reagents](#)