

MLKL (Phospho Ser345) (PT0987R) PT® Rabbit mAb

CatalogNo: YM8687 **Recombinant** 

Key Features

Host Species

- Rabbit

Reactivity

- Human, Mouse, Rat

Applications

- WB, IF, IP, ELISA

MW

- 54kD (Calculated)
- 54kD (Observed)

Isotype

- IgG, Kappa

Recommended Dilution Ratios

WB 1:2000-1:10000**IF 1:200-1:1000****ELISA 1:5000-1:20000****IP 1:50-1:200**

Storage

Storage* -15°C to -25°C/1 year(Do not lower than -25°C)**Formulation** PBS, 50% glycerol, 0.05% Proclin 300, 0.05%BSA

Basic Information

Clonality Monoclonal**Clone Number** PT0987R

Immunogen Information

Specificity

MLKL (Phospho Ser345) Monoclonal Antibody detects endogenous levels of MLKL Phospho-ser345 at Human, Mouse, Rat. The name of modified sites may be influenced by many factors, such as species (the modified site was not originally found in human samples) and the change of protein sequence (the previous protein sequence is incomplete, and the protein sequence may be prolonged with the development of protein sequencing technology). When naming, we will use the "numbers" in historical reference to keep the sites consistent with the reports. The antibody binds to the following modification sequence (lowercase letters are modification sites): QNslS

Target Information

Gene name MLKL

Protein Name MLKL Phospho-ser345

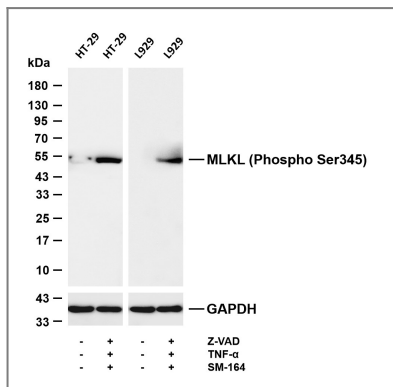
Organism	Gene ID	UniProt ID
Human	197259 ;	Q8NB16 ;
Mouse	74568 ;	Q9D2Y4 ;

Cellular Localization	Cytoplasm . Cell membrane . Nucleus . Localizes to the cytoplasm and translocates to the plasma membrane on necroptosis induction (PubMed:24316671). Localizes to the nucleus in response to orthomyxoviruses infection (By similarity). .
------------------------------	--

Tissue specificity Chondrocyte,Leukocyte,Lymph node,

Function	Domain:The protein kinase domain is predicted to be catalytically inactive.,similarity:Belongs to the protein kinase superfamily.,similarity:Contains 1 protein kinase domain..
-----------------	---

Validation Data



Various whole cell lysates were separated by 4-20% SDS-PAGE, and the membrane was blotted with anti-MLKL (Phospho Ser345) (PT0987R) antibody. The HRP-conjugated Goat anti-Rabbit IgG (H + L) antibody was used to detect the antibody. Lane 1: HT-29 Lane 2: HT-29 was treated with Z-VAD(20μM) for 30 minutes before adding TNF-α(20ng/ml) and SM-164(100nM) for 7 hours. Lane 3: L929 Lane 4: L929 was treated with Z-VAD(20μM) for 30 minutes before adding TNF-α(20ng/ml) and SM-164(100nM) for 7 hours. Predicted band size: 54kDa Observed band size: 54kDa

Contact information

Orders: order.cn@immunoway.com
Support: support.cn@immunoway.com
Telephone: 400-8787-807(China)
Website: <http://www.immunoway.com.cn>
Address: 2200 Ringwood Ave San Jose, CA 95131 USA



Please scan the QR code to access additional product information:
MLKL (Phospho Ser345) (PT0987R)
PT® Rabbit mAb

