

ERK 1/2 (Phospho Thr202/Tyr204) (PT0643R) PT™ Rabbit mAb

CatalogNo: YM8452 **Recombinant** 

Key Features

Host Species

- Rabbit

Reactivity

- Human, Mouse, Rat

Applications

- WB, IF, ELISA

MW

- 44kD, 42kD (Calculated)
44kD, 42kD (Observed)

Isotype

- IgG, Kappa

Storage

Storage* -15°C to -25°C/1 year (Do not lower than -25°C)

Formulation PBS, 50% glycerol, 0.05% Proclin 300, 0.05% BSA

Recommended Dilution Ratios

WB 1:2000-1:10000

IF 1:200-1:1000

ELISA 1:5000-1:20000

Basic Information

Clonality Monoclonal

Clone Number PT0643R

Immunogen Information

Immunogen The specific immunogen used to produce this antibody is proprietary information.

Specificity This antibody detects endogenous levels of p44 and p42 MAP Kinase (Erk1 and Erk2) when dually phosphorylated at Thr202 and Tyr204 of Erk1 (Thr185 and Tyr187 of Erk2), and Erk2 singly phosphorylated at Thr185, and Erk1 singly phosphorylated at Thr202

Target Information

Gene name MAPK1/MAPK3

Protein Name Mitogen-activated protein kinase 3

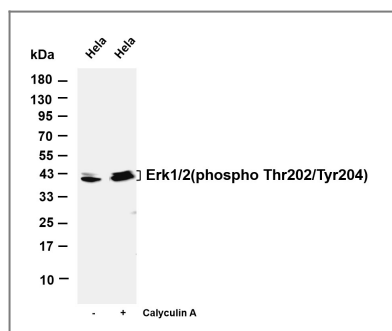
Organism	Gene ID	UniProt ID
Human	5594 ; 5595 ;	P27361 ; P28482 ;
Mouse	26417 ; 26413 ;	
Rat	50689 ; 116590 ;	P21708 ; P63086 ;

Cellular Localization Cytoplasm , Nucleus

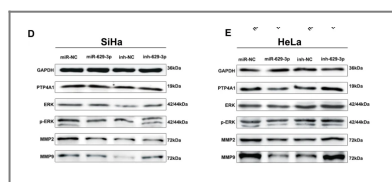
Tissue specificity Epithelium ,Eye ,Hepatoma ,Human cervix ,Lymph ,

Function Catalytic activity:ATP + a protein = ADP + a phosphoprotein. ,cofactor:Magnesium. ,Domain:The TXY motif contains the threonine and tyrosine residues whose phosphorylation activates the MAP kinases. ,enzyme regulation:Activated by tyrosine phosphorylation in response to insulin and NGF. ,Function:Involved in both the initiation and regulation of meiosis , mitosis , and postmitotic functions in differentiated cells by phosphorylating a number of transcription factors such as ELK-1. Phosphorylates EIF4EBP1; required for initiation of translation. Phosphorylates microtubule-associated protein 2 (MAP2) . Phosphorylates SPZ1 (By similarity) . Phosphorylates heat shock factor protein 4 (HSF4) . ,PTM:Dually phosphorylated on Thr-202 and Tyr-204 , which activates the enzyme. ,similarity:Belongs to the protein kinase superfamily. ,similarity:Belongs to the protein kinase superfamily. CMGC Ser/Thr protein kinase family. MAP kinase subfamily. ,similarity:Contains 1 protein kinase domain. ,subunit:Interacts with MORG1 (By similarity) . Binds to HIV-1 Nef. This interaction inhibits its kinase activity. Interacts with HSF4 and NISCH. ,

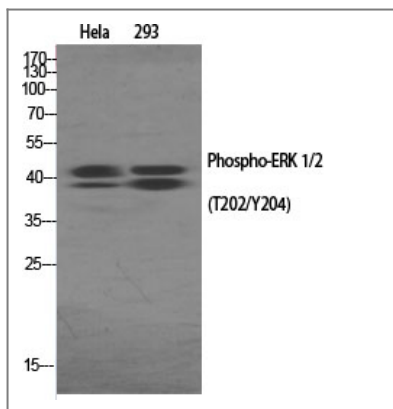
Validation Data



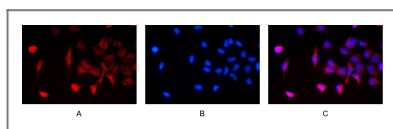
Various whole cell lysates were separated by 4-20% SDS-PAGE, and the membrane was blotted with anti-Erk1/2 (phospho Thr202/Tyr204) antibody. The HRP-conjugated Goat anti-Rabbit IgG (H + L) antibody was used to detect the antibody. Lane 1: HeLa Lane 2: HeLa was starved of serum for 24 hours and then treated with 20% fetal bovine serum for 15 minutes, followed by Calyculin A treatment for 15 minutes Predicted band size: 44,42kDa Observed band size: 44,42kDa



Li, X., Ma, N., Zhang, Y. et al. Circular RNA circNRIP1 promotes migration and invasion in cervical cancer by sponging miR-629-3p and regulating the PTP4A1/ERK1/2 pathway. Cell Death Dis 11, 399 (2020).



Western Blot analysis of various cells using Phospho-ERK 1/2 (T202/Y204) Antibody



Immunofluorescence analysis of HEK293. Picture A: ERK1 antibody (red). Picture B: DAPI (blue). Picture C: Merge of A+B

Contact information

Orders: order.cn@immunoway.com
 Support: support.cn@immunoway.com
 Telephone: 400-8787-807(China)
 Website: <http://www.immunoway.com.cn>
 Address: 2200 Ringwood Ave San Jose, CA 95131 USA



Please scan the QR code to access additional product information:
ERK 1/2 (Phospho Thr202/Tyr204) (PT0643R) PT™ Rabbit mAb

For Research Use Only. Not for Use in Diagnostic Procedures.

[Antibody](#) | [ELISA Kits](#) | [Protein](#) | [Reagents](#)