

CD4 (PT0610R) PT® Rabbit mAb

CatalogNo: YM8419 **Recombinant** 

Key Features

Host Species

- Rabbit

Reactivity

- Human, Mouse

Applications

- WB, IHC, IF, IP, ELISA

MW

- 51kD (Calculated)
- 60kD (Observed)

Isotype

- IgG, Kappa

Recommended Dilution Ratios

IHC 1:200-1:1000

WB 1:2000-1:10000

IF 1:200-1:1000

ELISA 1:5000-1:20000

IP 1:50-1:200

Storage

Storage* -15°C to -25°C/1 year (Do not lower than -25°C)**Formulation** PBS, 50% glycerol, 0.05% Proclin 300, 0.05% BSA

Basic Information

Clonality Monoclonal**Clone Number** PT0610R

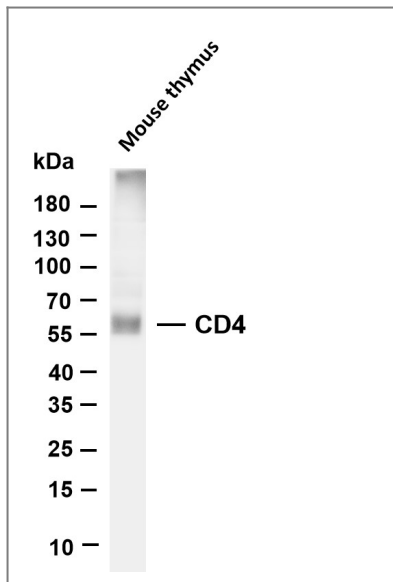
Immunogen Information

Specificity Endogenous

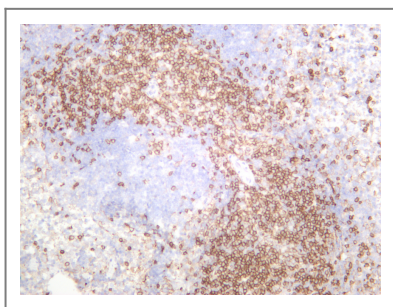
| Target Information

Gene name	CD4		
Protein Name	T-cell surface glycoprotein CD4 (T-cell surface antigen T4/Leu-3) (CD antigen CD4)		
	Organism	Gene ID	UniProt ID
	Human	920 ;	P01730 ;
	Mouse	12504 ;	P06332 ;
	Rat	24932 ;	P05540 ;
Cellular Localization	Membrane		
Tissue specificity	Highly expressed in T-helper cells. The presence of CD4 is a hallmark of T-helper cells which are specialized in the activation and growth of cytotoxic T-cells, regulation of B cells, or activation of phagocytes. CD4 is also present in other immune cells such as macrophages, dendritic cells or NK cells.		
Function	Integral membrane glycoprotein that plays an essential role in the immune response and serves multiple functions in responses against both external and internal offenses. In T-cells, functions primarily as a coreceptor for MHC class II molecule:peptide complex. The antigens presented by class II peptides are derived from extracellular proteins while class I peptides are derived from cytosolic proteins. Interacts simultaneously with the T-cell receptor (TCR) and the MHC class II presented by antigen presenting cells (APCs). In turn, recruits the Src kinase LCK to the vicinity of the TCR-CD3 complex. LCK then initiates different intracellular signaling pathways by phosphorylating various substrates ultimately leading to lymphokine production, motility, adhesion and activation of T-helper cells. In other cells such as macrophages or NK cells, plays a role in differentiation/activation, cytokine expression and cell migration in a TCR/LCK-independent pathway. Participates in the development of T-helper cells in the thymus and triggers the differentiation of monocytes into functional mature macrophages. ; (Microbial infection) Primary receptor for human immunodeficiency virus-1 (HIV-1) . Down-regulated by HIV-1 Vpu . Acts as a receptor for Human Herpes virus 7/HHV-7 .		

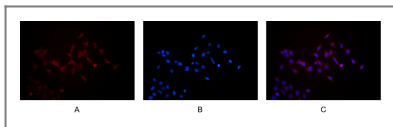
| Validation Data



Various whole cell lysates were separated by 4-20% SDS-PAGE, and the membrane was blotted with anti-CD4 antibody. The HRP-conjugated Goat anti-Rabbit IgG(H + L) antibody was used to detect the antibody. Lane 1: Mouse thymus Predicted band size: 51kDa Observed band size: 60kDa



Mouse spleen was stained with anti-CD4 rabbit antibody



Immunofluorescence analysis of HEK293. Picture A: CD4 antibody (red). Picture B: DAPI (blue). Picture C: Merge of A+B

Contact information

Orders: order.cn@immunoway.com
 Support: support.cn@immunoway.com
 Telephone: 400-8787-807(China)
 Website: <http://www.immunoway.com.cn>
 Address: 2200 Ringwood Ave San Jose, CA 95131 USA



Please scan the QR code to access additional product information:
CD4 (PT0610R) PT®
Rabbit mAb

For Research Use Only. Not for Use in Diagnostic Procedures.

[Antibody](#) | [ELISA Kits](#) | [Protein](#) | [Reagents](#)