

## CREBBP (PT0526R) PT® Rabbit mAb

CatalogNo: YM8348 **Recombinant** 

### Key Features

#### Host Species

- Rabbit

#### Reactivity

- Human, Mouse, Rat,

#### Applications

- WB, IHC, IF, IP, ELISA

#### MW

- 265kDa (Calculated)  
300kD (Observed)

#### Isotype

- IgG, Kappa

### Recommended Dilution Ratios

IHC 1:200-1:1000

WB 1:2000-1:10000

IF 1:200-1:1000

ELISA 1:5000-1:20000

IP 1:50-1:200

### Storage

**Storage\*** -15°C to -25°C/1 year (Do not lower than -25°C)

**Formulation** PBS, 50% glycerol, 0.05% Proclin 300, 0.05% BSA

### Basic Information

**Clonality** Monoclonal

**Clone Number** PT0526R

### Immunogen Information

**Specificity** Endogenous

## | Target Information

**Gene name** CREBBP CBP

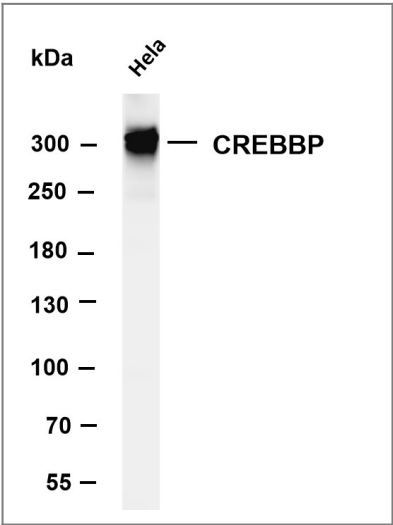
**Protein Name** CREB-binding protein (EC 2.3.1.48)

Organism	Gene ID	UniProt ID
Human	<a href="#">1387;</a>	<a href="#">Q92793;</a>
Mouse		<a href="#">P45481;</a>

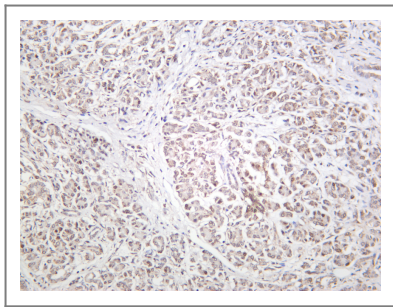
**Cellular Localization** Nucleus

**Function** Acetylates histones, giving a specific tag for transcriptional activation . Also acetylates non-histone proteins, like DDX21, FBL, IRF2, MAFG, NCOA3, POLR1E/PAF53 and FOXO1 . Binds specifically to phosphorylated CREB and enhances its transcriptional activity toward cAMP-responsive genes. Acts as a coactivator of ALX1. Acts as a circadian transcriptional coactivator which enhances the activity of the circadian transcriptional activators: NPAS2-ARNTL/BMAL1 and CLOCK-ARNTL/BMAL1 heterodimers . Acetylates PCNA; acetylation promotes removal of chromatin-bound PCNA and its degradation during nucleotide excision repair (NER) . Acetylates POLR1E/PAF53, leading to decreased association of RNA polymerase I with the rDNA promoter region and coding region . Acetylates DDX21, thereby inhibiting DDX21 helicase activity . Acetylates FBL, preventing methylation of 'Gln-105' of histone H2A (H2AQ104me) . Functions as a transcriptional coactivator for SMAD4 in the TGF-beta signaling pathway .

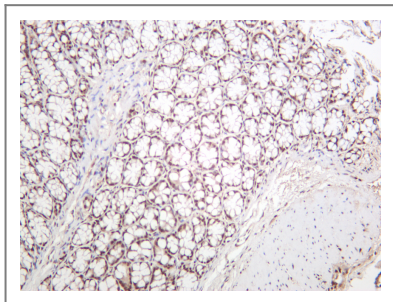
## | Validation Data



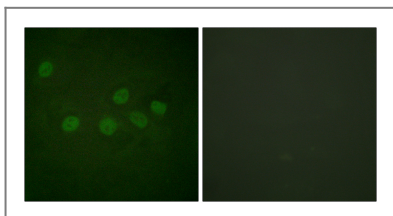
Various whole cell lysates were separated by 4-8% SDS-PAGE, and the membrane was blotted with anti-CREBBP antibody. The HRP-conjugated Goat anti-Rabbit IgG(H + L) antibody was used to detect the antibody. Lane 1: HeLa Predicted band size: 300kDa Observed band size: 300kDa



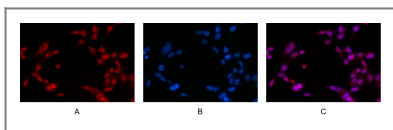
Human pancreas was stained with anti-CREBBP rabbit antibody



Mouse colon was stained with anti-CREBBP rabbit antibody



Immunofluorescence analysis of HeLa cells, using CBP Antibody. The picture on the right is blocked with the synthesized peptide.



Immunofluorescence analysis of HEK293. Picture A: CREBBP antibody (red). Picture B: DAPI (blue). Picture C: Merge of A+B

## Contact information

Orders: [order.cn@immunoway.com](mailto:order.cn@immunoway.com)  
 Support: [support.cn@immunoway.com](mailto:support.cn@immunoway.com)  
 Telephone: 400-8787-807(China)  
 Website: <http://www.immunoway.com.cn>  
 Address: 2200 Ringwood Ave San Jose, CA 95131 USA



Please scan the QR code to access additional product information:  
**CREBBP (PT0526R)**  
**PT® Rabbit mAb**

For Research Use Only. Not for Use in Diagnostic Procedures.

[Antibody](#) | [ELISA Kits](#) | [Protein](#) | [Reagents](#)