

BMP-2 (PT0362R) PT™ Rabbit mAb

CatalogNo: YM8215 **Recombinant** 

Key Features

Host Species

- Rabbit

Reactivity

- Human, Mouse, Rat

Applications

- WB, IHC, IF, ELISA

MW

- 45kD, 13kD (Calculated)
30kD, 13kD (Observed)

Isotype

- IgG, Kappa

Storage

Storage* -15°C to -25°C/1 year (Do not lower than -25°C)

Formulation PBS, 50% glycerol, 0.05% Proclin 300, 0.05% BSA

Recommended Dilution Ratios

IHC 1:200-1:1000

WB 1:1000-1:5000

IF 1:200-1:1000

ELISA 1:5000-1:20000

Basic Information

Clonality Monoclonal

Clone Number PT0362R

Immunogen Information

Immunogen Synthesized peptide derived from C-terminal BMP 2

Specificity Endogenous

Target Information

Gene name BMP2

Protein Name Bone morphogenetic protein 2

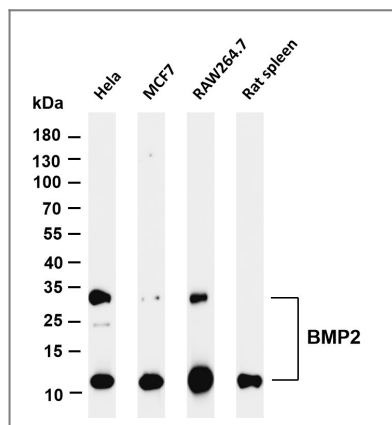
Organism	Gene ID	UniProt ID
Human	650 ;	P12643 ;
Mouse	12156 ;	P21274 ;
Rat	29373 ;	P49001 ;

Cellular Localization Secreted

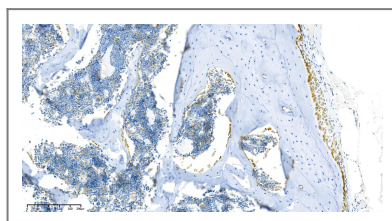
Tissue specificity Particularly abundant in lung , spleen and colon and in low but significant levels in heart , brain , placenta , liver , skeletal muscle , kidney , pancreas , prostate , ovary and small intestine.

Function Function:Induces cartilage and bone formation. ,online information:Bone morphogenetic protein 2 entry ,similarity:Belongs to the TGF-beta family. ,subunit:Homodimer; disulfide-linked. Interacts with GREM2 (By similarity) and SOSTDC1. ,tissue specificity:Particularly abundant in lung , spleen and colon and in low but significant levels in heart , brain , placenta , liver , skeletal muscle , kidney , pancreas , prostate , ovary and small intestine. ,

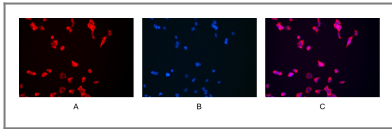
Validation Data



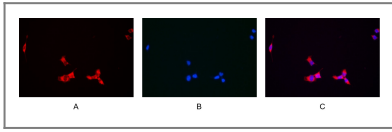
Various whole cell lysates were separated by 4-20% SDS-PAGE, and the membrane was blotted with anti-BMP2 antibody. The HRP-conjugated Goat anti-Rabbit IgG (H + L) antibody was used to detect the antibody. Lane 1: HeLa Lane 2: MCF7 Lane 3: RAW264.7 Lane 4: Rat spleen Predicted band size: 45,13kDa Observed band size: 30,13kDa



Rat spine was stained with anti-BMP2 Rabbit antibody



Immunofluorescence analysis of HEK293. Picture A: BMP2 antibody (red).
Picture B: DAPI (blue). Picture C: Merge of A+B



Immunofluorescence analysis of HEK293. Picture A: BMP2 antibody (red).
Picture B: DAPI (blue). Picture C: Merge of A+B

Contact information

Orders: order.cn@immunoway.com
Support: support.cn@immunoway.com
Telephone: 400-8787-807(China)
Website: <http://www.immunoway.com.cn>
Address: 2200 Ringwood Ave San Jose, CA 95131 USA



Please scan the QR code
to access additional
product information:
BMP-2 (PT0362R)
PT™ Rabbit mAb

For Research Use Only. Not for Use in Diagnostic Procedures.

[Antibody](#) | [ELISA Kits](#) | [Protein](#) | [Reagents](#)