

NDUFB8 (PT0387R) PT™ Rabbit mAb

CatalogNo: YM8160 **Recombinant** 

Key Features

Host Species

- Rabbit

Reactivity

- Human, Mouse, Rat

Applications

- WB, IHC, IF, IP, ELISA

MW

- 22kD (Calculated)
- 22kD (Observed)

Isotype

- IgG, Kappa

Storage

Storage* -15°C to -25°C/1 year (Do not lower than -25°C)

Formulation PBS, 50% glycerol, 0.05% Proclin 300, 0.05% BSA

Recommended Dilution Ratios

IHC 1:200-1:1000

WB 1:1000-1:5000

IF 1:200-1:1000

ELISA 1:5000-1:20000

IP 1:50-1:200,

Basic Information

Clonality Monoclonal

Clone Number PT0387R

Immunogen Information

Immunogen The specific immunogen used to produce this antibody is proprietary information.

Specificity Endogenous

Target Information

Gene name NDUFB8

Protein Name NADH dehydrogenase [ubiquinone] 1 beta subcomplex subunit 8, mitochondrial (Complex I-ASHI) (CI-ASHI) (NADH-ubiquinone oxidoreductase ASHI subunit)

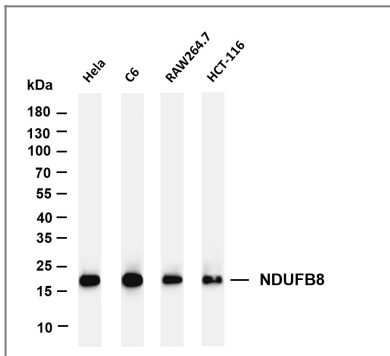
Organism	Gene ID	UniProt ID
Human	4714;	O95169;
Mouse		Q9D6J5;

Cellular Localization Mitochondrion inner membrane

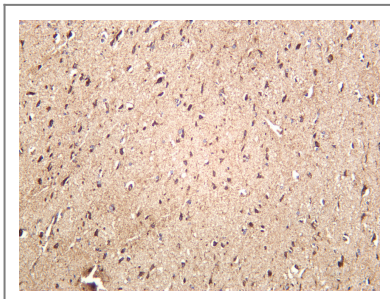
Tissue specificity Blood ,Brain ,Lung ,Umbilical cord blood ,

Function Function:Accessory subunit of the mitochondrial membrane respiratory chain NADH dehydrogenase (Complex I) , that is believed to be not involved in catalysis. Complex I functions in the transfer of electrons from NADH to the respiratory chain. The immediate electron acceptor for the enzyme is believed to be ubiquinone. ,similarity:Belongs to the complex I NDUFB8 subunit family. ,subunit:Complex I is composed of 45 different subunits. ,

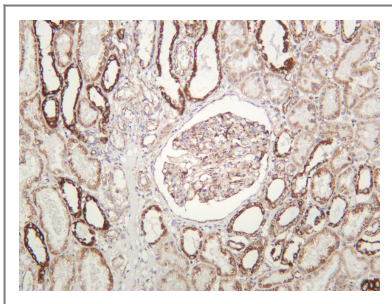
Validation Data



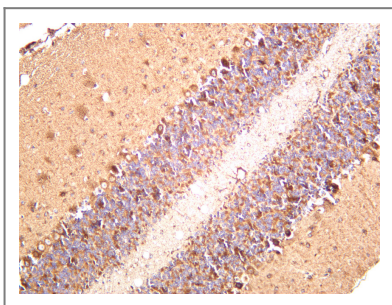
Various whole cell lysates were separated by 4-20% SDS-PAGE, and the membrane was blotted with anti-NDUFB8 antibody. The HRP-conjugated Goat anti-Rabbit IgG (H + L) antibody was used to detect the antibody. Lane 1: HeLa Lane 2: C6 Lane 3: RAW264.7 Lane 4: HCT-116 Predicted band size: 22kDa Observed band size: 22kDa



Human brain was stained with anti-NDUFB8 rabbit antibody



Human kidney was stained with anti-NDUFB8 rabbit antibody



Mouse brain was stained with anti-NDUFB8 rabbit antibody

| Contact information

Orders: order.cn@immunoway.com
Support: support.cn@immunoway.com
Telephone: 400-8787-807(China)
Website: <http://www.immunoway.com.cn>
Address: 2200 Ringwood Ave San Jose, CA 95131 USA



Please scan the QR code
to access additional
product information:
NDUFB8 (PT0387R)
PT™ Rabbit mAb

For Research Use Only. Not for Use in Diagnostic Procedures.

[Antibody](#) | [ELISA Kits](#) | [Protein](#) | [Reagents](#)