

S100A6 (ABT179R) Rabbit mAb (Ready to Use)

CatalogNo: YM7275R **Recombinant** 

Key Features

Host Species

- Rabbit

Reactivity

- Human,

Applications

- IHC

Isotype

- IgG1, Kappa

Recommended Dilution Ratios

Ready to use for IHC

Storage

Storage* 2°C to 8°C/1 year

Formulation The prediluted ready-to-use antibody is diluted in phosphate buffer saline containing stabilizing protein and 0.05% Proclin 300

Basic Information

Clonality Monoclonal

Clone Number ABT179R

Immunogen Information

Immunogen Synthesized peptide derived from human S100A6 AA range:50-90

Specificity This antibody detects endogenous levels of S100A6

Target Information

Gene name S100A6 CACY

Protein Name S100A6

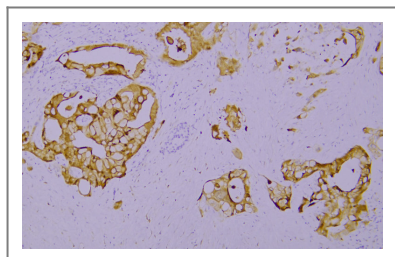
| Organism | Gene ID | UniProt ID |
|----------|------------------------|--------------------------|
| Human | 6277 ; | P06703 ; |

Cellular Localization Nuclear, Cytoplasmic

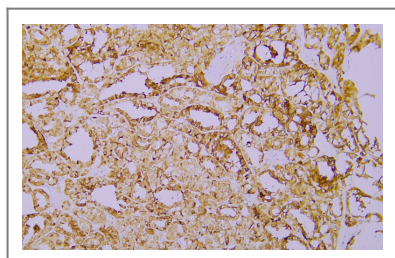
Tissue specificity Brain,Fibroblast,Placenta,Platelet,

Function induction:Preferentially expressed when quiescent fibroblasts are stimulated to proliferate. It is inducible by growth factors and overexpressed in acute myeloid leukemias.,miscellaneous:This protein co-purified with the prolactin receptor.,PTM:The N-terminus is blocked.,similarity:Belongs to the S-100 family.,similarity:Contains 2 EF-hand domains.,subunit:Homodimer, antiparallel. Interacts with SUGT1.,

Validation Data



Immunohistochemical analysis of paraffin-embedded human Pancreatic carcinoma. 1, Antibody was incubated at 4° overnight. 2, TRIS-EDTA of pH8.0 was used for antigen retrieval. 3,Secondary antibody was diluted at 1:200(room temperature, 30min).



Immunohistochemical analysis of paraffin-embedded human Papillary thyroid carcinoma. 1, Antibody was incubated at 4° overnight. 2, TRIS-EDTA of pH8.0 was used for antigen retrieval. 3,Secondary antibody was diluted at 1:200(room temperature, 30min).

Contact information

Orders: order.cn@immunoway.com
Support: support.cn@immunoway.com
Telephone: 400-8787-807(China)
Website: <http://www.immunoway.com.cn>
Address: 2200 Ringwood Ave San Jose, CA 95131 USA



Please scan the QR code to access additional product information:
S100A6 (ABT179R)
Rabbit mAb (Ready to Use)

