

STAT1 (PTR2109) Mouse mAb

CatalogNo: YM4105 **Recombinant** 

Key Features

Host Species

- Mouse

Reactivity

- Human, Dog

Applications

- WB, IF, IP, ELISA

MW

- 87kD (Calculated)
- 87kD (Observed)

Isotype

- IgG2a, Kappa

Storage

Storage* -15°C to -25°C/1 year(Do not lower than -25°C)**Formulation** PBS, 50% glycerol, 0.05% Proclin 300, 0.05%BSA

Recommended Dilution Ratios

WB 1:500-2000**IF 1:100-500****ELISA 1:1000-5000****IP 1:50-1:200**

Basic Information

Clonality Monoclonal**Clone Number** PTR2109

Immunogen Information

Immunogen Synthesized peptide derived from human Stat1. AA range: 650-750**Specificity** This antibody detects endogenous levels of Stat1 protein.

Target Information

Gene name STAT1

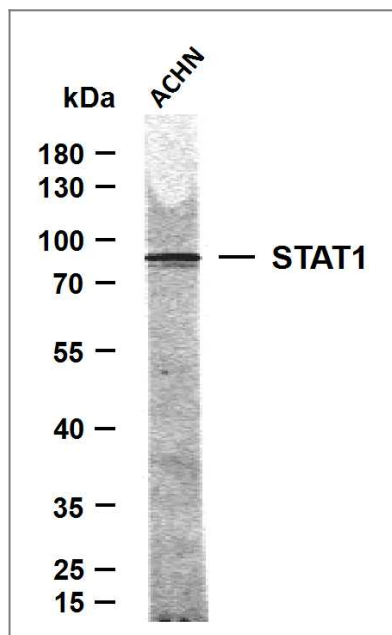
Protein Name Signal transducer and activator of transcription 1-alpha/beta (Transcription factor ISGF-3 components p91/p84)

Organism	Gene ID	UniProt ID
Human	6772 ;	P42224 ;
Mouse		P42225 ;

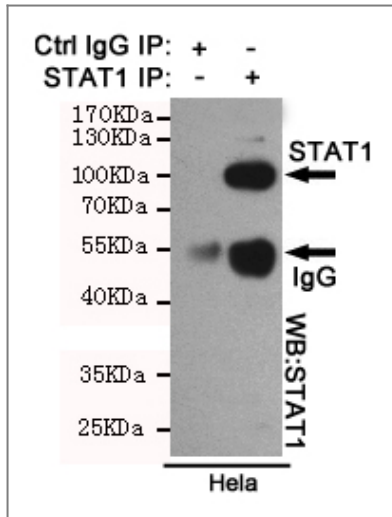
Function

Signal transducer and transcription activator that mediates cellular responses to interferons (IFNs), cytokine KITLG/SCF and other cytokines and other growth factors. Following type I IFN (IFN-alpha and IFN-beta) binding to cell surface receptors, signaling via protein kinases leads to activation of Jak kinases (TYK2 and JAK1) and to tyrosine phosphorylation of STAT1 and STAT2. The phosphorylated STATs dimerize and associate with ISGF3G/IRF-9 to form a complex termed ISGF3 transcription factor, that enters the nucleus . ISGF3 binds to the IFN stimulated response element (ISRE) to activate the transcription of IFN-stimulated genes (ISG), which drive the cell in an antiviral state. In response to type II IFN (IFN-gamma), STAT1 is tyrosine- and serine-phosphorylated . It then forms a homodimer termed IFN-gamma-activated factor (GAF), migrates into the nucleus and binds to the IFN gamma activated sequence (GAS) to drive the expression of the target genes, inducing a cellular antiviral state. Becomes activated in response to KITLG/SCF and KIT signaling. May mediate cellular responses to activated FGFR1, FGFR2, FGFR3 and FGFR4.

Validation Data



Whole cell lysates were separated by 10% SDS-PAGE, and the membrane was blotted with anti-STAT1 (PTR2109) antibody. The HRP-conjugated Goat anti-Mouse IgG(H + L) antibody was used to detect the antibody. Lane 1: ACHN



Immunoprecipitation analysis of HeLa cell lysates using STAT1 mouse mAb.

Contact information

Orders: order.cn@immunoway.com
 Support: support.cn@immunoway.com
 Telephone: 400-8787-807(China)
 Website: <http://www.immunoway.com.cn>
 Address: 2200 Ringwood Ave San Jose, CA 95131 USA



Please scan the QR code to access additional product information:
STAT1 (PTR2109)
Mouse mAb

For Research Use Only. Not for Use in Diagnostic Procedures.

[Antibody](#) | [ELISA Kits](#) | [Protein](#) | [Reagents](#)