

## $\beta$ -Tubulin (5G3) Mouse mAb (HRP)

CatalogNo: YM2208

### | Key Features

**Host Species**

- Mouse

**Reactivity**

- Human,Rat,Mouse,Mk,Dg,Ch,Hamster,Rabbit,sheep,Insect,Yeast

**Applications**

- WB,IF,IHC

**MW**

- 55kD  
(Observed)

**Conjugate**

- HRP

### | Recommended Dilution Ratios

**WB 1:1000-1:3000****IHC 1:50-1:200****IF 1:200**

### | Storage

**Storage\***

-15°C to -25°C/1 year(Do not lower than -25°C)

**Formulation**

Liquid in PBS containing 50% glycerol, 0.5% BSA and 0.02% sodium azide.

### | Basic Information

**Clonality**

Monoclonal

**Clone Number**

5G3

### | Immunogen Information

**Immunogen**Recombinant Protein of  $\beta$ -tubulin (HRP Conjugated)**Specificity**The $\beta$ -tubulin antibody can detects endogenous $\beta$ -tubulin protein.

## | Target Information

**Gene name** TUBB

**Protein Name** Tubulin beta chain (Tubulin beta-5 chain)

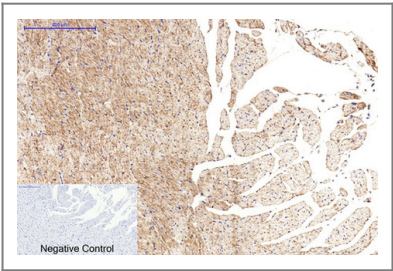
Organism	Gene ID	UniProt ID
Human	<a href="#">203068</a> ;	<a href="#">P07437</a> ;
Mouse		<a href="#">P99024</a> ;
Rat		<a href="#">P69897</a> ;

**Cellular Localization** Cytoplasm, cytoskeleton .

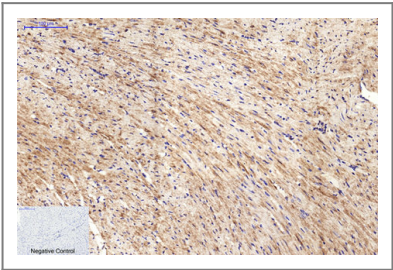
**Tissue specificity** Ubiquitously expressed with highest levels in spleen, thymus and immature brain.

**Function** Domain:The highly acidic C-terminal region may bind cations such as calcium.,Function:Tubulin is the major constituent of microtubules. It binds two moles of GTP, one at an exchangeable site on the beta chain and one at a non-exchangeable site on the alpha-chain.,online information:Tubulin entry,similarity:Belongs to the tubulin family.,subunit:Dimer of alpha and beta chains.,tissue specificity:Ubiquitously expressed with highest levels in spleen, thymus and immature brain.,

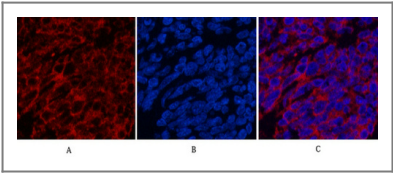
## | Validation Data



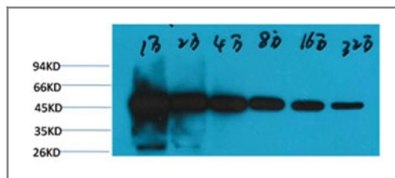
Immunohistochemical analysis of paraffin-embedded Rat-heart tissue. 1,β-tubulin (HRP Conjugated) Monoclonal Antibody(5G3) was diluted at 1:200(4°C,overnight). 2, Sodium citrate pH 6.0 was used for antibody retrieval(>98°C,20min). 3,Secondary antibody was diluted at 1:200(room temperature, 30min). Negative control was used by secondary antibody only.



Immunohistochemical analysis of paraffin-embedded Mouse-heart tissue. 1,β-tubulin (HRP Conjugated) Monoclonal Antibody(5G3) was diluted at 1:200(4°C,overnight). 2, Sodium citrate pH 6.0 was used for antibody retrieval(>98°C,20min). 3,Secondary antibody was diluted at 1:200(room temperature, 30min). Negative control was used by secondary antibody only.



Immunofluorescence analysis of Human-lung-cancer tissue. 1,β-tubulin (HRP Conjugated) Monoclonal Antibody(5G3)(red) was diluted at 1:200(4°C,overnight). 2, Cy3 labeled Secondary antibody was diluted at 1:300(room temperature, 50min).3, Picture B: DAPI(blue) 10min. Picture A:Target. Picture B: DAPI. Picture C: merge of A+B



Western blot analysis of Hela, with  $\beta$ -tubulin-HRP Conjugated diluted at 1:10,000, 20,000, 40,000, 80,000, 160,000, 320,000.

## Contact information

Orders: order.cn@immunoway.com  
 Support: support.cn@immunoway.com  
 Telephone: 400-8787-807(China)  
 Website: <http://www.immunoway.com.cn>  
 Address: 2200 Ringwood Ave San Jose, CA 95131 USA



Please scan the QR code to access additional product information:

**$\beta$ -Tubulin (5G3)**  
**Mouse mAb (HRP)**

For Research Use Only. Not for Use in Diagnostic Procedures.

[Antibody](#) | [ELISA Kits](#) | [Protein](#) | [Reagents](#)