

## $\beta$ -Tubulin (5G3) Mouse mAb (Biotin)

CatalogNo: YM2203

### Key Features

#### Host Species

- Mouse

#### Reactivity

- Human, Mouse, Rat, Mk, Dg, Ch, Hamster, Rabbit, sheep, Insect, Yeast

#### Applications

- WB, IF, IHC

#### Isotype

- IgG1

#### Conjugate

- Biotin

### Storage

#### Storage\*

Stable for one year at -15°C to -25°C from date of shipment. For maximum recovery of product, centrifuge the original vial after thawing and prior to removing the cap. Aliquot to avoid repeated freezing and thawing.

#### Formulation

Liquid in PBS, pH 7.4, containing 0.02% sodium azide as preservative and 50% Glycerol.

### Recommended Dilution Ratios

Optimal working dilutions should be determined experimentally by the investigator

Suggested starting dilutions are as follows: WB 1:5000

IHC 1:200.

### Basic Information

**Clonality** Monoclonal

**Clone Number** 5G3

### Immunogen Information

**Immunogen** The specific immunogen used to produce this antibody is proprietary information.

**Specificity**  $\beta$ -Tubulin Monoclonal Antibody(5G3) Biotin conjugated specially designed for your WB or IHC analysis.

---

## | Target Information

**Gene name** TUBB3

**Protein Name** Tubulin beta-3 chain

Organism	Gene ID	UniProt ID
Human	<a href="#">10381</a> ;	<a href="#">Q13509</a> ;

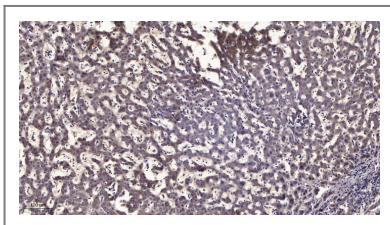
**Cellular Localization** Cytoplasm , cytoskeleton . Cell projection , growth cone . Cell projection , lamellipodium . Cell projection , filopodium .

**Tissue specificity** Expression is primarily restricted to central and peripheral nervous system. Greatly increased expression in most cancerous tissues.

**Function** Domain:The highly acidic C-terminal region may bind cations such as calcium. ,Function:Receptor for MSH (alpha , beta and gamma) and ACTH. The activity of this receptor is mediated by G proteins which activate adenylate cyclase. ,Function:Tubulin is the major constituent of microtubules. It binds two moles of GTP , one at an exchangeable site on the beta chain and one at a non-exchangeable site on the alpha-chain. ,polymorphism:Genetic variations in MC1R are associated with variation in skin/hair/eye pigmentation type 2 (SHEP2) [MIM:266300]. Hair , eye and skin pigmentation are among the most visible examples of human phenotypic variation , with a broad normal range that is subject to substantial geographic stratification. In the case of skin , individuals tend to have lighter pigmentation with increasing distance from the equator. By contrast , the majority of variation in human eye and hair color is found among individuals of European ancestry , with most other human populations fixed for brown eyes and black hair. ,polymorphism:Variations in MC1R are linked to the degree of skin pigmentation (Types I-IV) . Type I skin the most lightly pigmented and type IV the most dark pigmented. Partial loss-of-function mutations are associated with fair skin , poor tanning and increased skin cancer risk. ,similarity:Belongs to the G-protein coupled receptor 1 family. ,similarity:Belongs to the tubulin family. ,subunit:Dimer of alpha and beta chains. ,tissue specificity:Melanocytes and corticoadrenal tissue. ,

---

## | Validation Data



Immunohistochemical analysis of paraffin-embedded human liver cancer. 1, Antibody was diluted at 1:200 (4°C overnight). 2, Tris-EDTA,pH9.0 was used for antigen retrieval. 3,Secondary antibody was diluted at 1:200 (room temperature, 45min).

---

## | Contact information

Orders: order.cn@immunoway.com  
Support: support.cn@immunoway.com  
Telephone: 400-8787-807(China)  
Website: <http://www.immunoway.com.cn>  
Address: 2200 Ringwood Ave San Jose, CA 95131 USA



Please scan the QR code  
to access additional  
product information:  
 **$\beta$ -Tubulin (5G3)  
Mouse mAb (Biotin)**

---

For Research Use Only. Not for Use in Diagnostic Procedures.

[Antibody](#) | [ELISA Kits](#) | [Protein](#) | [Reagents](#)