

## Tubulin $\alpha$ (8F11) Mouse mAb (AbFluor 350)

CatalogNo: YM2173

Comparable Abs 

### Key Features

**Host Species**

- Mouse

**Reactivity**

- Human,Rat,Mouse

**Applications**

- WB,IHC,IF,IP

**Isotype**

- IgG

**Conjugate**

- AbFluor 350

### Recommended Dilution Ratios

Optimal working dilutions should be determined experimentally by the investigator

Suggested starting dilutions are as follows:IHC 1:50-300

IF 1:200.

### Storage

**Storage\***

Stable for one year at -15°C to -25°C from date of shipment. For maximum recovery of product, centrifuge the original vial after thawing and prior to removing the cap. Aliquot to avoid repeated freezing and thawing. Store in dark.

**Formulation**

Liquid in PBS, pH 7.4, containing 0.02% sodium azide as preservative and 50% Glycerol.

### Basic Information

**Clonality**

Monoclonal

**Clone Number**

8F11

### Immunogen Information

**Specificity**

$\alpha$ -tubulin Monoclonal Antibody(8F11) AbFluor™ 350 Conjugated specially designed for your Immunofluorescence analysis.

## | Target Information

**Gene name** TUBA1A

**Protein Name** Tubulin alpha-1A chain

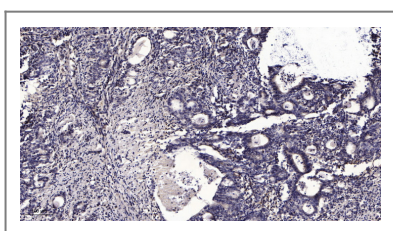
Organism	Gene ID	UniProt ID
Human	<a href="#">7846</a> ; <a href="#">10376</a> ;	<a href="#">Q71U36</a> ; <a href="#">P68363</a> ;

**Cellular Localization** Cytoplasm, cytoskeleton.

**Tissue specificity** Expressed at a high level in fetal brain.

**Function** Disease:Defects in TUBA1A are the cause of lissencephaly type 3 (LIS3) [MIM:611603]. LIS is characterized by a smooth brain surface due to the absence (agyria) or reduction (pachygyria) of surface convolutions. It is often associated with psychomotor retardation and seizures. LIS3 features include agyria or pachygyria or laminar heterotopia, severe mental retardation, motor delay, variable presence of seizures, and abnormalities of corpus callosum, hippocampus, cerebellar vermis and brainstem.,Function:Tubulin is the major constituent of microtubules. It binds two moles of GTP, one at an exchangeable site on the beta chain and one at a non-exchangeable site on the alpha-chain.,PTM:Undergoes a tyrosination/detyrosination cycle, the cyclic removal and re-addition of a C-terminal tyrosine residue by the enzymes tubulin tyrosine carboxypeptidase (TTCP) and tubulin tyrosine ligase (TTL), respectively.,similarity:Belongs to the tubulin family.,subunit:Dimer of alpha and beta chains.,tissue specificity:Expressed at a high level in fetal brain.,

## | Validation Data



Immunohistochemical analysis of paraffin-embedded human Gastric adenocarcinoma. 1, Antibody was diluted at 1:200(4° overnight). 2, Tris-EDTA,pH9.0 was used for antigen retrieval. 3,Secondary antibody was diluted at 1:200(room temperature, 45min).

## | Contact information

Orders: order.cn@immunoway.com  
Support: support.cn@immunoway.com  
Telephone: 400-8787-807(China)  
Website: <http://www.immunoway.com.cn>  
Address: 2200 Ringwood Ave San Jose, CA 95131 USA



Please scan the QR code to access additional product information:  
**Tubulin α (8F11)**  
**Mouse mAb**  
**(AbFluor 350)**

