

## Cleaved Ephrin-A2 (Asn188) Rabbit pAb

CatalogNo: YC0052 **Orthogonal Validated** 

### Key Features

#### Host Species

- Rabbit

#### Reactivity

- Human, Mouse

#### Applications

- WB, ELISA

#### MW

- 21kD (Observed)

#### Isotype

- IgG

### Storage

**Storage\*** -15°C to -25°C/1 year (Do not lower than -25°C)

**Formulation** Liquid in PBS containing 50% glycerol, 0.5% BSA and 0.02% sodium azide.

### Recommended Dilution Ratios

**WB 1:500-1:2000**

**ELISA 1:20000**

**Not yet tested in other applications.**

### Basic Information

**Clonality** Polyclonal

### Immunogen Information

**Immunogen** The antiserum was produced against synthesized peptide derived from human EFNA2. AA range:139-188

**Specificity** Cleaved-Ephrin-A2 (N188) Polyclonal Antibody detects endogenous levels of fragment of activated Ephrin-A2 protein resulting from cleavage adjacent to N188.

### Target Information

**Gene name** EFNA2

**Protein Name** Ephrin-A2

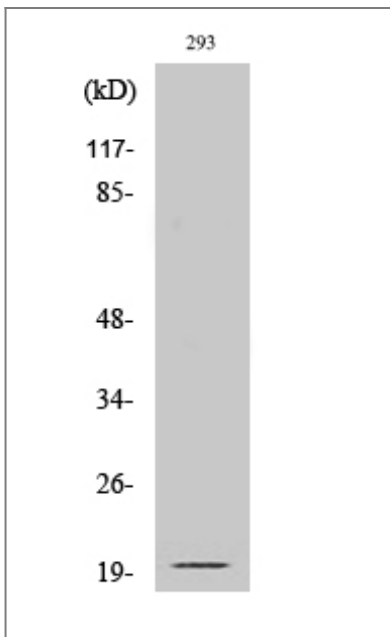
Organism	Gene ID	UniProt ID
Human	<a href="#">1943</a> ;	<a href="#">O43921</a> ;
Mouse	<a href="#">13637</a> ;	<a href="#">P52801</a> ;

**Cellular Localization** Cell membrane ; Lipid-anchor, GPI-anchor .

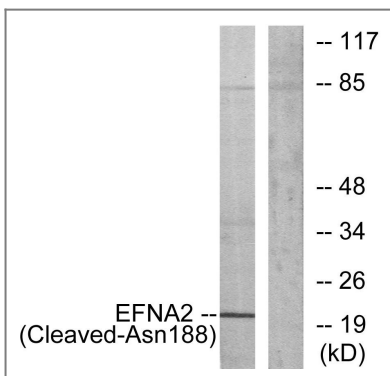
**Tissue specificity** Brain,

**Function** similarity:Belongs to the ephrin family.,subunit:Binds to the receptor tyrosine kinases EPHA3, EPHA4 and EPHA5.,

## Validation Data



Western Blot analysis of various cells using Cleaved-Ephrin-A2 (N188) Polyclonal Antibody



Western blot analysis of lysates from 293 cells, treated with etoposide 25uM 1h, using EFNA2 (Cleaved-Asn188) Antibody. The lane on the right is blocked with the synthesized peptide.

## | Contact information

Orders: order.cn@immunoway.com  
Support: support.cn@immunoway.com  
Telephone: 400-8787-807(China)  
Website: <http://www.immunoway.com.cn>  
Address: 2200 Ringwood Ave San Jose, CA 95131 USA



Please scan the QR code to access additional product information:  
**Cleaved Ephrin-A2 (Asn188) Rabbit pAb**

---

For Research Use Only. Not for Use in Diagnostic Procedures.

[Antibody](#) | [ELISA Kits](#) | [Protein](#) | [Reagents](#)