

Prestained Protein Marker(10-250kDa)

【产品货号/Catalog】

D03-250

【产品名称/Name】

- 1、通用名称：彩色预染蛋白 Marker(10-250 kDa)
- 2、Name: Prestained Protein Marker (10-250 kDa)

【产品介绍】

彩色预染蛋白 Marker (10-250kDa) 是一种即用型试剂, 使用前无需煮沸, 含有 11 种覆盖广泛分子量 (10~250 kDa) 的预染色蛋白质, 包括 70 kDa 的**橙色**参考带和 25 kDa 的**绿色**参考带。可用于在 SDS-PAGE 中监测蛋白质分离、验证蛋白质印迹转移 (PVDF、尼龙或硝化纤维素膜) 以及蛋白质的近似大小。

The 3-color Prestained Protein Marker Marker is a ready to use three-color protein standard with 11 pre-stained proteins covering a wide range of molecular weights from 10 to 250 kDa (10 to 230 kDa in Bis-Tris /MOPS buffer). Proteins are covalently coupled with a blue chromophore except for two reference bands (one **green** at 25 kDa and one **red** band at 70 kDa respectively) when separated on SDS-PAGE (Tris-Glycine buffer).

The Protein Marker is designed for monitoring protein separation during SDS-polyacrylamide gel electro-phoresis, verification of Western transfer efficiency on membranes, (PVDF, nylon, or nitrocellulose) and for approximating the size of proteins.

【包装规格 Size】

250mL*2 tubes, 250mL*10 tubes

【储存条件 Storage】

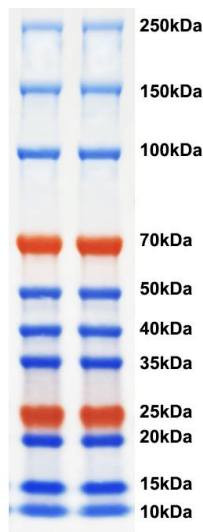
2-8°C for 3 months, -30 to -15°C for at least 2 years

【使用说明】

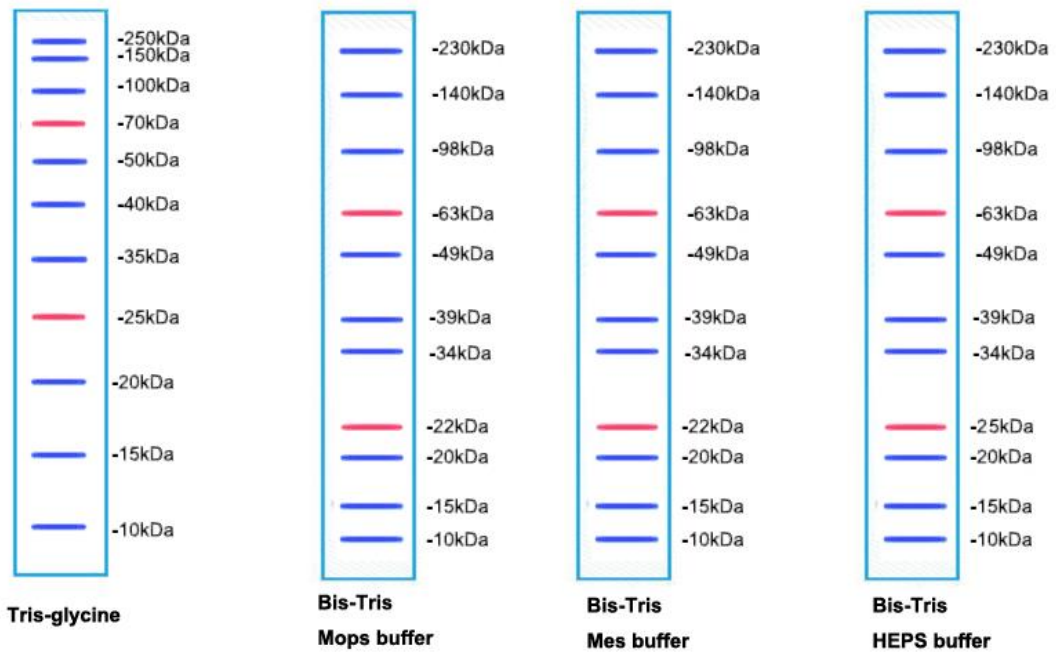
- 1、Western Blot: 3-5 μ L/land;
- 2、SDS-PAGE: 1-2 μ L/land (15 lands gel) ; 2-3 μ L/land (10 lands gel) 。

【注意事项】

1. 产品已预混 loading buffer, **不需要加热、稀释或添加还原剂**。The marker is supplied in gel loading buffer and is ready to use. **Do NOT heat, dilute, or add reducing agents before loading.**
2. 加样前在室温放置数分钟, 解冻后, 轻轻摇匀, 以确保溶液混合均匀。Let it stand at room temperature for a few minutes before using, and after thawing, shake it gently to ensure that the solution is mixed evenly.



Tris-glycine 电泳体系示意图, 每孔 4 微升上样。



蛋白 marker 在不同电泳缓冲体系中的迁移示意图