

## p19 ARF Rabbit pAb

CatalogNo: YT8151

### Key Features

#### Host Species

- Rabbit

#### Reactivity

- Mouse

#### Applications

- WB

#### MW

- 19kD (Calculated)
- 19kD (Observed)

#### Isotype

- IgG

### Storage

**Storage\*** -15°C to -25°C/1 year(Do not lower than -25°C)

**Formulation** PBS, 50% glycerol, 0.05% Proclin 300, 0.05%BSA

### Recommended Dilution Ratios

**WB 1:2000-1:10000**

### Basic Information

**Clonality** Polyclonal

### Immunogen Information

**Immunogen** Synthesized peptide derived from part region of human protein. AA range:1-130

**Specificity** Endogenous

### Target Information

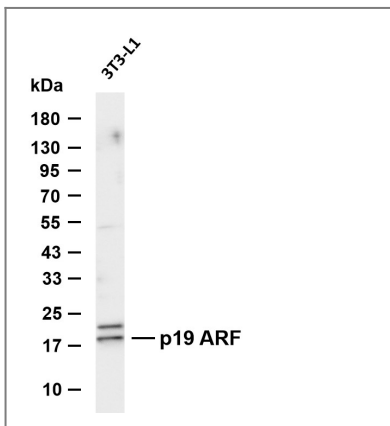
**Gene name** CDKN2A

**Protein Name** Cyclin-dependent kinase inhibitor 2A isoform 4

Organism	Gene ID	UniProt ID
Human	<a href="#">1029;</a>	<a href="#">Q8N726;</a>
Mouse	<a href="#">12578;</a>	<a href="#">Q64364;</a>

**Cellular Localization** Nucleus, nucleolus . Nucleus, nucleoplasm .; [Isoform smARF]: Mitochondrion .

## Validation Data



Various whole cell lysates were separated by 4-20% SDS-PAGE, and the membrane was blotted with anti-p19 ARF antibody. The HRP-conjugated Goat anti-Rabbit IgG (H + L) antibody was used to detect the antibody. Lane 1: 3T3-L1 Predicted band size: 19kDa Observed band size: 19kDa

## Contact information

Orders: [order.cn@immunoway.com](mailto:order.cn@immunoway.com)  
Support: [support.cn@immunoway.com](mailto:support.cn@immunoway.com)  
Telephone: 400-8787-807(China)  
Website: <http://www.immunoway.com.cn>  
Address: 2200 Ringwood Ave San Jose, CA 95131 USA



Please scan the QR code to access additional product information:  
**p19 ARF Rabbit pAb**

For Research Use Only. Not for Use in Diagnostic Procedures.

[Antibody](#) | [ELISA Kits](#) | [Protein](#) | [Reagents](#)