

SLUG Rabbit pAb

CatalogNo: YT7985

Key Features

Host Species

- Rabbit

Reactivity

- Human, Mouse, Rat

Applications

- WB, ELISA, IHC

MW

- 29kD (Calculated)

Isotype

- IgG

Recommended Dilution Ratios

WB 1:500-2000

IHC 1:50-300

ELISA 1:2000-20000

Storage

Storage*

-15°C to -25°C/1 year (Do not lower than -25°C)

Formulation

Liquid in PBS containing 50% glycerol, 0.5% BSA and 0.02% sodium azide.

Basic Information

Clonality

Polyclonal

Immunogen Information

Immunogen

Synthesized peptide derived from human SNAI2 AA range: 197-247

Specificity

This antibody detects endogenous levels of Human, Mouse, Rat SNAI2

Target Information

Gene name

SNAI2 SLUG SLUGH

Protein Name Zinc finger protein SNAI2

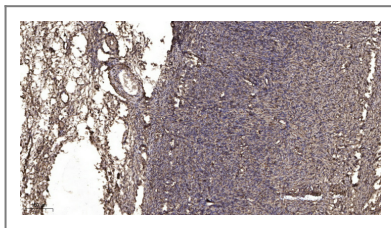
Organism	Gene ID	UniProt ID
Human	6591 ;	O43623 ;
Mouse	20583 ;	P97469 ;
Rat	25554 ;	O08954 ;

Cellular Localization Nucleus . Cytoplasm. Observed in discrete foci in interphase nuclei. These nuclear foci do not overlap with the nucleoli, the SP100 and the HP1 heterochromatin or the coiled body, suggesting SNAI2 is associated with active transcription or active splicing regions.

Tissue specificity Expressed in most adult human tissues, including spleen, thymus, prostate, testis, ovary, small intestine, colon, heart, brain, placenta, lung, liver, skeletal muscle, kidney and pancreas. Not detected in peripheral blood leukocyte. Expressed in the dermis and in all layers of the epidermis, with high levels of expression in the basal layers (at protein level). Expressed in osteoblasts (at protein level). Expressed in mesenchymal stem cells (at protein level). Expressed in breast tumor cells (at protein level).

Function Disease:Defects in SNAI2 are a cause of neural tube defects (NTD).,Disease:Defects in SNAI2 are the cause of Waardenburg syndrome type 2D (WS2D) [MIM:608890]. WS2 is a genetically heterogeneous, autosomal dominant disorder characterized by sensorineural deafness, pigmentary disturbances, and absence of dystopia canthorum. The frequency of deafness is higher in WS2 than in WS1.,Function:Transcriptional repressor. Involved in the generation and migration of neural crest cells.,similarity:Belongs to the snail C2H2-type zinc-finger protein family.,similarity:Contains 5 C2H2-type zinc fingers.,tissue specificity:Expressed in placenta and adult heart, pancreas, liver, kidney and skeletal muscle.,

Validation Data



Immunohistochemical analysis of paraffin-embedded human oophoroma. 1, Antibody was diluted at 1:200(4° overnight). 2, Tris-EDTA,pH9.0 was used for antigen retrieval. 3,Secondary antibody was diluted at 1:200(room temperature, 45min).

Contact information

Orders: order.cn@immunoway.com
Support: support.cn@immunoway.com
Telephone: 400-8787-807(China)
Website: <http://www.immunoway.com.cn>
Address: 2200 Ringwood Ave San Jose, CA 95131 USA



Please scan the QR code to access additional product information:
SLUG Rabbit pAb

