

SWS Rabbit pAb

CatalogNo: YT7934

Key Features

Host Species

- Rabbit

Reactivity

- Human,Rat,Mouse,

Applications

- WB,ELISA,IHC

MW

- 38kD (Observed)

Isotype

- IgG

Recommended Dilution Ratios

WB 1:500-2000**IHC 1:50-300****ELISA 1:2000-20000**

Storage

Storage*

-15°C to -25°C/1 year(Do not lower than -25°C)

Formulation

Liquid in PBS containing 50% glycerol, 0.5% BSA and 0.02% sodium azide.

Basic Information

Clonality

Polyclonal

Immunogen Information

Immunogen

Synthesized peptide derived from human SWS

Specificity

This antibody detects endogenous levels of Human SWS

Target Information

Gene name

OPN1SW BCP

Protein Name Short-wave-sensitive opsin 1 (Blue cone photoreceptor pigment) (Blue-sensitive opsin) (BOP)

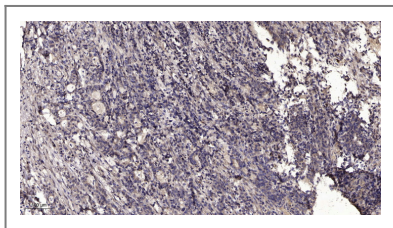
Organism	Gene ID	UniProt ID
Human	611;	P03999;
Mouse	12057;	P51491;
Rat	81644;	Q63652;

Cellular Localization Cell membrane ; Multi-pass membrane protein . Photoreceptor inner segment . Cell projection, cilium, photoreceptor outer segment . Cytoplasm, perinuclear region .

Tissue specificity The three color pigments are found in the cone photoreceptor cells (PubMed:2937147). Expressed throughout the epidermis and dermis, primarily in the stratum granulosum in the facial and abdominal skin (at protein level) (PubMed:30168605). Expressed in dermal fibroblasts (at protein level) (PubMed:31380578). Expressed in melanocytes (at protein level) (PubMed:31730232).

Function Disease:Defects in OPN1SW are the cause of tritan color blindness (tritanopia) [MIM:190900].,Function:Visual pigments are the light-absorbing molecules that mediate vision. They consist of an apoprotein, opsin, covalently linked to cis-retinal.,online information:Retina International's Scientific Newsletter,PTM:Phosphorylated on some or all of the serine and threonine residues present in the C-terminal region.,similarity:Belongs to the G-protein coupled receptor 1 family.,similarity:Belongs to the G-protein coupled receptor 1 family. Opsin subfamily.,tissue specificity:The three color pigments are found in the cone photoreceptor cells.,

Validation Data



Immunohistochemical analysis of paraffin-embedded human Gastric adenocarcinoma. 1, Antibody was diluted at 1:200(4° overnight). 2, Tris-EDTA,pH9.0 was used for antigen retrieval. 3,Secondary antibody was diluted at 1:200(room temperature, 45min).

Contact information

Orders: order.cn@immunoway.com
Support: support.cn@immunoway.com
Telephone: 400-8787-807(China)
Website: <http://www.immunoway.com.cn>
Address: 2200 Ringwood Ave San Jose, CA 95131 USA



Please scan the QR code to access additional product information:
SWS Rabbit pAb

