

RBP4 Rabbit pAb

CatalogNo: YT7861

Key Features

Host Species

- Rabbit

Reactivity

- Human,Rat,Mouse,

Applications

- WB,IHC

MW

- 22kD (Calculated)

Isotype

- IgG

Recommended Dilution Ratios

WB 1:500-2000

IHC 1:50-300

Storage

Storage*

-15°C to -25°C/1 year(Do not lower than -25°C)

Formulation

Liquid in PBS containing 50% glycerol, 0.5% BSA and 0.02% sodium azide.

Basic Information

Clonality

Polyclonal

Immunogen Information

Immunogen

Synthesized peptide derived from human RBP AA range: 11-60

Specificity

This antibody detects endogenous levels of Human RBP

Target Information

Gene name

RBP4 PRO2222

Protein Name Retinol-binding protein 4

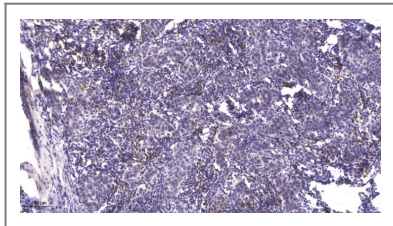
Organism	Gene ID	UniProt ID
Human	5950;	P02753;
Mouse	19662;	Q00724;
Rat	25703;	P04916;

Cellular Localization Secreted .

Tissue specificity Detected in blood plasma and in urine (at protein level).

Function Disease:A deficiency of vitamin A blocks secretion of the binding protein post-translationally and results in defective delivery and supply of vitamin to the epidermal cells (a condition associated with a dermatosis).,Disease:Defects in RBP4 are a cause of retinol-binding protein deficiency [MIM:180250]. This condition causes night vision problems. It produces a typical "fundus xerophthalmicus," featuring a progressed atrophy of the retinal pigment epithelium.,Function:Delivers retinol from the liver stores to the peripheral tissues. In plasma, the RBP-retinol complex interacts with transthyretin, this prevents its loss by filtration through the kidney glomeruli.,mass spectrometry: PubMed:12237133,mass spectrometry: PubMed:7666002,online information:Retina International's Scientific Newsletter,online information:Retinol-binding protein 4 entry,similarity:Belongs to the calycin superfamily. Lipocalin family.,

Validation Data



Immunohistochemical analysis of paraffin-embedded human Breast cancer. 1, Antibody was diluted at 1:200(4° overnight). 2, Tris-EDTA,pH9.0 was used for antigen retrieval. 3,Secondary antibody was diluted at 1:200(room temperature, 45min).

Contact information

Orders: order.cn@immunoway.com
Support: support.cn@immunoway.com
Telephone: 400-8787-807(China)
Website: <http://www.immunoway.com.cn>
Address: 2200 Ringwood Ave San Jose, CA 95131 USA



Please scan the QR code to access additional product information:
RBP4 Rabbit pAb