

## Presenilin 2 Rabbit pAb

CatalogNo: YT7778

### | Key Features

#### Host Species

- Rabbit

#### Reactivity

- Human, Mouse, Rat

#### Applications

- WB, IHC

#### MW

- 49kD (Calculated)

#### Isotype

- IgG

### | Recommended Dilution Ratios

WB 1:500-2000

IHC 1:50-300

### | Storage

#### Storage\*

-15°C to -25°C/1 year (Do not lower than -25°C)

#### Formulation

Liquid in PBS containing 50% glycerol, 0.5% BSA and 0.02% sodium azide.

### | Basic Information

#### Clonality

Polyclonal

### | Immunogen Information

#### Immunogen

Synthesized peptide derived from human Presenilin 2 AA range: 270-350

#### Specificity

This antibody detects endogenous levels of Human, Mouse, Rat Presenilin 2

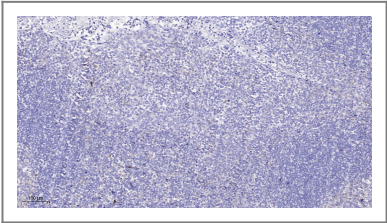
### | Target Information

#### Gene name

PSEN2 AD4 PS2 PSNL2 STM2

<b>Protein Name</b>	Presenilin-2		
	<b>Organism</b>	<b>Gene ID</b>	<b>UniProt ID</b>
	Human	<a href="#">5664;</a>	<a href="#">P49810;</a>
	Mouse	<a href="#">19165;</a>	<a href="#">Q61144;</a>
	Rat	<a href="#">81751;</a>	<a href="#">O88777;</a>
<b>Cellular Localization</b>	Endoplasmic reticulum membrane ; Multi-pass membrane protein . Golgi apparatus membrane ; Multi-pass membrane protein .		
<b>Tissue specificity</b>	Isoform 1 is seen in the placenta, skeletal muscle and heart while isoform 2 is seen in the heart, brain, placenta, liver, skeletal muscle and kidney.		
<b>Function</b>	<p>Disease:Defects in PSEN2 are the cause of Alzheimer disease type 4 (AD4) [MIM:606889]. AD is an autosomal dominant Alzheimer disease. Alzheimer disease is a neurodegenerative disorder characterized by progressive dementia, loss of cognitive abilities, and deposition of fibrillar amyloid proteins as intraneuronal neurofibrillary tangles, extracellular amyloid plaques and vascular amyloid deposits. The major constituent of these plaques is the neurotoxic amyloid-beta-APP 40-42 peptide (s), derived proteolytically from the transmembrane precursor protein APP by sequential secretase processing. The cytotoxic C-terminal fragments (CTFs) and the caspase-cleaved products such as C31 derived from APP, are also implicated in neuronal death.,Disease:Three causative genes have been identified that when mutated lead to presenile Alzheimer Disease: APP (amyloid precursor protein gene), PSEN1 and PSEN2. These three genes account for half of the families with autosomal dominant presenile AD, which represent approximately 10% of the whole AD population. In addition, apolipoprotein E has been identified as a risk-modifying locus.,Domain:The PAL motif is required for normal active site conformation.,Function:Probable catalytic subunit of the gamma-secretase complex, an endoprotease complex that catalyzes the intramembrane cleavage of integral membrane proteins such as Notch receptors and APP (beta-amyloid precursor protein). Requires the other members of the gamma-secretase complex to have a protease activity. May play a role in intracellular signaling and gene expression or in linking chromatin to the nuclear membrane. May function in the cytoplasmic partitioning of proteins.,online information:Presenilins mutations,PTM:Heterogeneous proteolytic processing generates N-terminal and C-terminal fragments.,PTM:Phosphorylated on serine residues.,similarity:Belongs to the peptidase A22A family.,subunit:Interacts with DOCK3 (By similarity). Homodimer. Component of the gamma-secretase complex, a complex composed of a presenilin homodimer (PSEN1 or PSEN2), nicastrin (NCSTN), APH1 (APH1A or APH1B) and PEN2. Such minimal complex is sufficient for secretase activity, although other components may exist. Interacts with HERPUD1, FLNA, FLNB and PARL.,tissue specificity:Isoform 1 is seen in the placenta, skeletal muscle and heart while isoform 2 is seen in the heart, brain, placenta, liver, skeletal muscle and kidney.,</p>		

| Validation Data



Immunohistochemical analysis of paraffin-embedded human tonsil. 1, Antibody was diluted at 1:200(4° overnight). 2, Tris-EDTA,pH9.0 was used for antigen retrieval. 3,Secondary antibody was diluted at 1:200(room temperature, 45min).

## | Contact information

Orders: order.cn@immunoway.com  
Support: support.cn@immunoway.com  
Telephone: 400-8787-807(China)  
Website: <http://www.immunoway.com.cn>  
Address: 2200 Ringwood Ave San Jose, CA 95131 USA



Please scan the QR code  
to access additional  
product information:  
**Presenilin 2 Rabbit  
pAb**

---

For Research Use Only. Not for Use in Diagnostic Procedures.

[Antibody](#) | [ELISA Kits](#) | [Protein](#) | [Reagents](#)