

## MYCT Rabbit pAb

CatalogNo: YT7757

### Key Features

#### Host Species

- Rabbit

#### Reactivity

- Human, Mouse, Rat

#### Applications

- WB, IHC

#### MW

- 71kD (Calculated)

#### Isotype

- IgG

### Recommended Dilution Ratios

WB 1:500-2000

IHC 1:50-300

### Storage

#### Storage\*

-15°C to -25°C/1 year (Do not lower than -25°C)

#### Formulation

Liquid in PBS containing 50% glycerol, 0.5% BSA and 0.02% sodium azide.

### Basic Information

#### Clonality

Polyclonal

### Immunogen Information

#### Immunogen

Synthesized peptide derived from human MYCT AA range: 352-402

#### Specificity

This antibody detects endogenous levels of MYCT at Human/Mouse/Rat

### Target Information

#### Gene name

SLC2A13

Protein Name MYCT

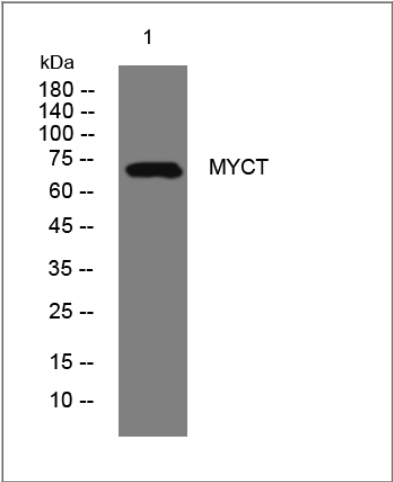
Organism	Gene ID	UniProt ID
Human	<a href="#">114134</a> ;	<a href="#">Q96QE2</a> ;
Mouse	<a href="#">239606</a> ;	<a href="#">Q3UHK1</a> ;
Rat	<a href="#">171147</a> ;	<a href="#">Q921A2</a> ;

Cellular Localization Cell membrane ; Multi-pass membrane protein .

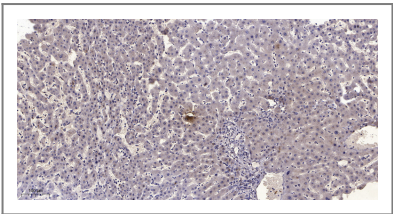
Tissue specificity Predominantly expressed in the brain.

Function Function:H(+)-myo-inositol cotransporter. Can also transport related stereoisomers.,PTM:Glycosylated.,similarity:Belongs to the major facilitator superfamily. Sugar transporter (TC 2.A.1.1) family.,tissue specificity:Predominantly expressed in the brain.,

Validation Data



Western blot analysis of lysates from HpeG2 cells, primary antibody was diluted at 1:1000, 4° over night



Immunohistochemical analysis of paraffin-embedded human liver cancer. 1, Antibody was diluted at 1:200(4° overnight). 2, Tris-EDTA,pH9.0 was used for antigen retrieval. 3,Secondary antibody was diluted at 1:200(room temperature, 45min).

Contact information

Orders: order.cn@immunoway.com  
Support: support.cn@immunoway.com  
Telephone: 400-8787-807(China)  
Website: <http://www.immunoway.com.cn>  
Address: 2200 Ringwood Ave San Jose, CA 95131 USA



Please scan the QR code  
to access additional  
product information:  
**MYCT Rabbit pAb**

---

For Research Use Only. Not for Use in Diagnostic Procedures.

[Antibody](#) | [ELISA Kits](#) | [Protein](#) | [Reagents](#)