

## PSB11 Rabbit pAb

CatalogNo: YT7742

### Key Features

#### Host Species

- Rabbit

#### Reactivity

- Human, Mouse

#### Applications

- WB, IHC

#### MW

- 33kD (Calculated)

#### Isotype

- IgG

### Recommended Dilution Ratios

WB 1:500-2000

IHC 1:50-300

### Storage

#### Storage\*

-15°C to -25°C/1 year (Do not lower than -25°C)

#### Formulation

Liquid in PBS containing 50% glycerol, 0.5% BSA and 0.02% sodium azide.

### Basic Information

#### Clonality

Polyclonal

### Immunogen Information

#### Immunogen

Synthesized peptide derived from human PSB11 AA range: 62-112

#### Specificity

This antibody detects endogenous levels of PSB11 at Human/Mouse

### Target Information

#### Gene name

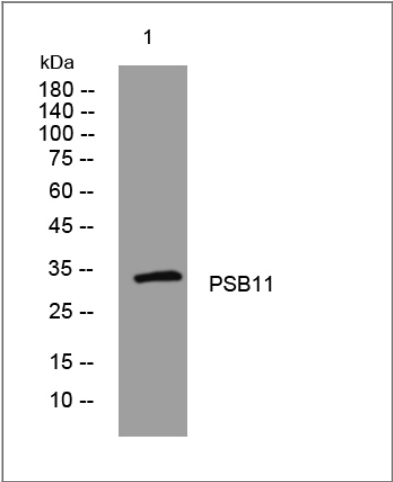
PSMB11

|              |          |                         |                         |
|--------------|----------|-------------------------|-------------------------|
| Protein Name | PSB11    |                         |                         |
|              | Organism | Gene ID                 | UniProt ID              |
|              | Human    | <a href="#">122706;</a> | <a href="#">A5LHX3;</a> |
|              | Mouse    | <a href="#">73902;</a>  | <a href="#">Q8BG41;</a> |

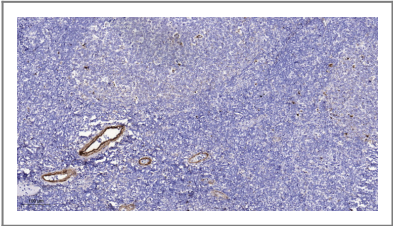
**Cellular Localization** Cytoplasm . Nucleus .

**Function** Catalytic activity:Cleavage of peptide bonds with very broad specificity.,Function:The proteasome is a multicatalytic proteinase complex which is characterized by its ability to cleave peptides with Arg, Phe, Tyr, Leu, and Glu adjacent to the leaving group at neutral or slightly basic pH. The proteasome has an ATP-dependent proteolytic activity. PSMB11 plays a pivotal role in development of CD8-positive T cells.,similarity:Belongs to the peptidase T1B family.,subunit:The 26S proteasome consists of a 20S proteasome core and two 19S regulatory subunits. The 20S proteasome core is composed of 28 subunits that are arranged in four stacked rings, resulting in a barrel-shaped structure. The two end rings are each formed by seven alpha subunits, and the two central rings are each formed by seven beta subunits. The catalytic chamber with the active sites is on the inside of the barrel. Incorporated instead of PSMB5 and PSMB8.,

## Validation Data



Western blot analysis of lysates from MDA-MB cells, primary antibody was diluted at 1:1000, 4°over night



Immunohistochemical analysis of paraffin-embedded human tonsil. 1, Antibody was diluted at 1:200(4° overnight). 2, Tris-EDTA,pH9.0 was used for antigen retrieval. 3,Secondary antibody was diluted at 1:200(room temperature, 45min).

## Contact information

Orders: order.cn@immunoway.com  
Support: support.cn@immunoway.com  
Telephone: 400-8787-807(China)  
Website: <http://www.immunoway.com.cn>  
Address: 2200 Ringwood Ave San Jose, CA 95131 USA



Please scan the QR code  
to access additional  
product information:  
**PSB11 Rabbit pAb**

---

For Research Use Only. Not for Use in Diagnostic Procedures.

[Antibody](#) | [ELISA Kits](#) | [Protein](#) | [Reagents](#)